

Cascade Alpaca Lace
Maggie Shawl



Designed by Patti Waters

Maggie Shawl

by Patti Waters

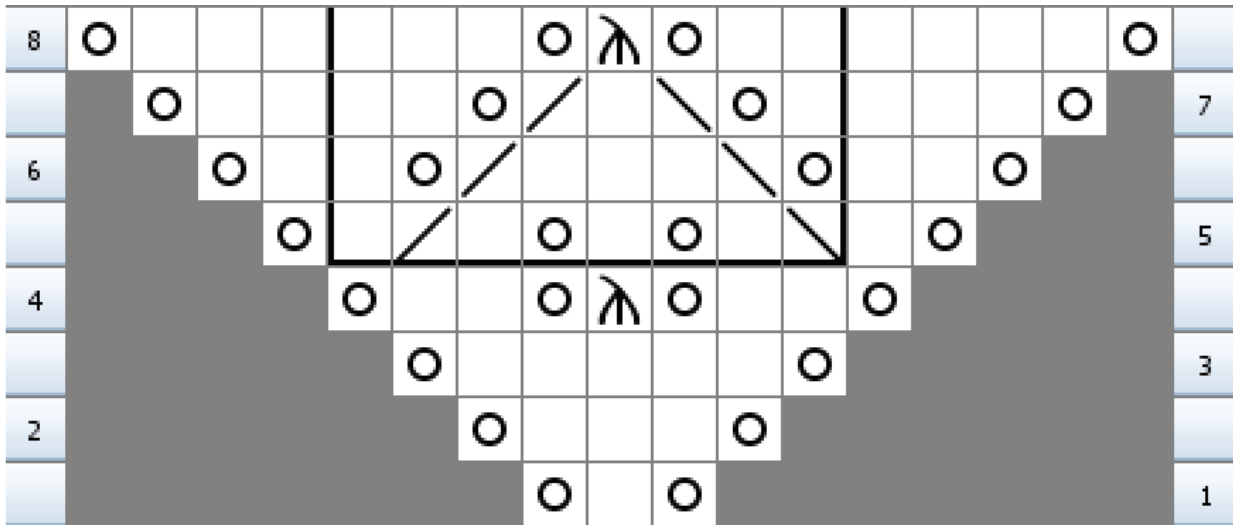
Materials: 2 skeins of Cascade Alpaca Lace Paints, 100% Baby Alpaca, 437 yds, 50 g, color #9764, US # 2/3.0 mm needle, circular is preferable to hold all the sts

Notes: The charts for this shawl do not include 2 border sts that are worked in garter st or wrong side rows. All wrong side rows are worked as follows: k2 border sts, p to last 2 sts, k 2 border sts.

Directions:

Cast on 2 sts and work 7 rows in garter st. From the side of the work pick up and knit 3 sts and from the bottom pick up and knit 2 sts, (7 sts total). All right side rows are worked as follows: k 2 border sts, work chart, k center st, work chart, k 2 border sts. All wrong side rows are worked as follows: k2 border sts, p to last 2 sts, k 2 border sts. To set up the pattern work rows 1-4 of the chart once, then repeat chart rows 5-8 for the body. Edging: Continue working WS rows in the same fashion as before. Work the following RS row three times: k2 yo k3 (sk2p k2 yo k1 yo k2) repeat () to the 6 sts before marker, sk2p k3 yo sm k1 yo k3 (sk2p k2 yo k1 yo k2) repeat () to the last 8 sts sk2p k3 yo k2. To bind off the shawl: ssk *slip st from right hand needle to left hand needle, ssk repeat from * until only one st remains.

To create a shawl of your desired size rows 5-8 may be repeated as many (or few) times as you like. Sample shown repeats these rows 21 times. Cut yarn, leaving enough of a tail to weave in later, and pull through last st. It may be beneficial to block your shawl when finished.



Legend:



No Stitch



yo



knit



sl1 k2tog pss0



ssk



k2tog