

FW167



Cascade 220® Fingering  
Rocketship Shawl



Designed by Vera Sanon

## Cascade 220® Fingering Rocketship Shawl

Designed by Vera Sanon

This versatile beautiful shawl wraps so comfortably around shoulders to accessorize a favorite formal dress or to dress up a t-shirt and jeans look. You may want more than one of these shawls in your wardrobe!

### **Materials:**

Cascade 220® Fingering (100% Wool/273 yards per skein) – 3 skeins (approx. 600 yards) of color # 9595

1 set of US # 8 (5 mm) –32” or 40” circular needle

Tapestry Needle

Stitch Markers

### **Dimensions:**

72” length, 16” height (after blocking)

### **Gauge:**

approx. 16 sts/4” (after blocking - gauge is not critical)

Each lace pattern is approximately 6.5” wide.

### ***Pattern Notes:***

The shawl has 3 sts of garter stitch on each side for a nice edging.

The 42-row lace pattern is worked once and is finished with a K2tog/YO row.

The rest of the shawl is worked in garter stitch-short rows that give the shawl the shaping.

### ***Abbreviations:***

**st/sts** stitch/stitches

**CO** cast on

**BO** bind off

**CN** cable needle

**PM** place stitch marker

**SM** slip stitch marker

**WS** wrong-side row

**RS** right-side row

**P** purl

**K** knit

**K2tog** knit 2 sts together

**MB** make bobble - [k1, p1] twice into next st. Turn, p4, turn, pass 2<sup>nd</sup>, 3<sup>rd</sup> & 4<sup>th</sup> sts over first st

**C9RC** make 9 st right cable – slip 5 sts to CN and hold to back, k4, k5 from CN

**SK2P** slip 1 st, k2tog, pass slipped st over

**S2KP** slip 2 sts together as if to knit, k2, pass slipped sts over

**SL2-K1-PSSO** – slip 2 sts, K 1 st, pass 2 slipped sts over just knit st

***Directions:***

CO 319 sts using a flexible cast on, such as long-tail cast on.

Set-up Rows: K all sts for 3 rows.

Row 1 – 42:

Place stitch markers - K3, \* work lace pattern repeats \* 11 times to last 3 sts, K3.

Work lace pattern chart for 42 rows.

When working row 42, remove all lace pattern stitch markers.

Row 43: K all sts.

Row 44: K3, p all sts until 3 sts remain, K3.

Row 45: K 3, \* K2tog, YO \* until 4 sts remain, K4.

Row 46: K3, p all sts until 3 sts remain, K3.

Row 47: Start working garter stitch short rows as follows – K 171 sts, turn and work next row.

Row 48: K 28 sts, turn and work next row.

Row 49: K all sts until 1 st before “end” of this row. *(This is the last st worked in the previous row.)* K the last st together with the next st, K 3 more sts. Turn and work next row.

Repeat Row 49 until all sts from the entire row have been worked. *(Each row, 4 additional sts will be worked. In the last row, there will be less sts left on needle. Work the last row with a k2tog and k all sts to end of row.)*

Work 2 more rows in garter stitch, or add additional rows to liking, and BO all sts in the next row. --- Use a loose bind off, such as “Jeny’s Surprisingly Loose Bind Off”.

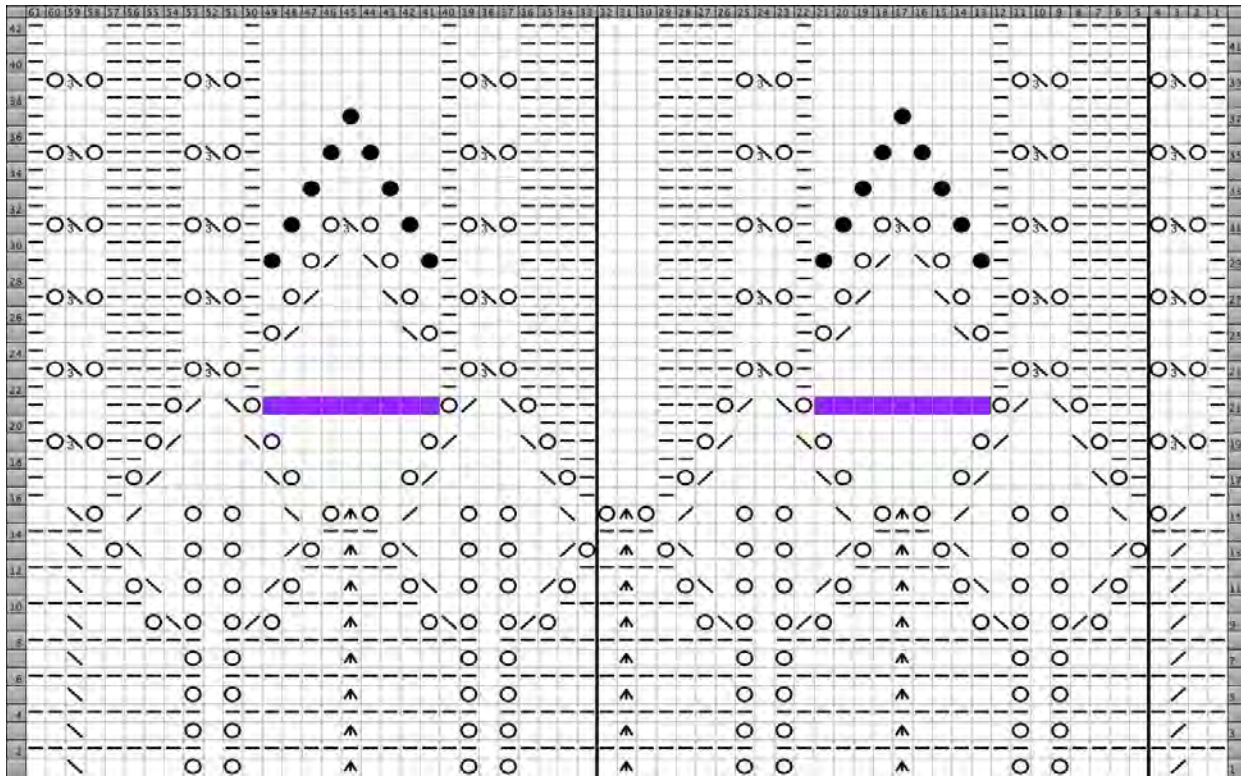
Block shawl and weave in ends.

## Lace Pattern:

K3, \* work lace pattern repeats \* 10 times to last 32 sts, work last 29 sts of lace pattern, K3.

**Please Note:** When working lace pattern, stitch markers are moved by 1 stitch to the left, in Rows 3, 5, 7, 9, 11, 13.

28 stitch lace pattern repeat is denoted by **bold** vertical line.



**Bobble** - [k1, p1] twice into next st. Turn, p4, turn, pass 2<sup>nd</sup>, 3<sup>rd</sup> & 4<sup>th</sup> sts over first st

**9 Purple Sts = C9RC**-make 9 st right cable–slip 5 sts to CN and hold to back, k4, k5 from CN

Key:	
<p>● Bobble                      (RS) Bobble                      (WS) Bobble</p>	<p>⊖ Purl                      (RS) Purl                      (WS) Knit</p>
<p>▲ Central Double Decrease                      cdd                      (RS) slip 2 sts, knit 1, pass 2 slip sts over                      (WS) slip 2 sts together, purl next st, pass 2 slip stitches over</p>	<p>SK2P                      sk2p                      (RS) Slip K2tog PSSO                      (WS) Slip purl2 tog PSSO</p>
<p>□ Knit                      k                      (RS) Knit                      (WS) Purl</p>	<p>⧘ Slip Slip Knit                      ssk                      (RS) slip, slip, knit slipped sts together                      (WS) slip, slip, purl slipped sts together</p>
<p>⧚ Knit 2 Together                      k2tog                      (RS) Knit 2 stitches together                      (WS) Purl 2 Together</p>	<p>○ Yarn Over                      yo                      (RS) Yarn Over                      (WS) Yarn Over</p>

