



W296

Cascade 220 Superwash  
Fair Isle Headband



Designed by Cheryl Beckerich

# Fair Isle Headband

By Cheryl Beckerich

## Materials

1 skein each of Cascade 220 Superwash, 100% superwash wool, 220 yds/200 m

Pink, color 901 (MC)

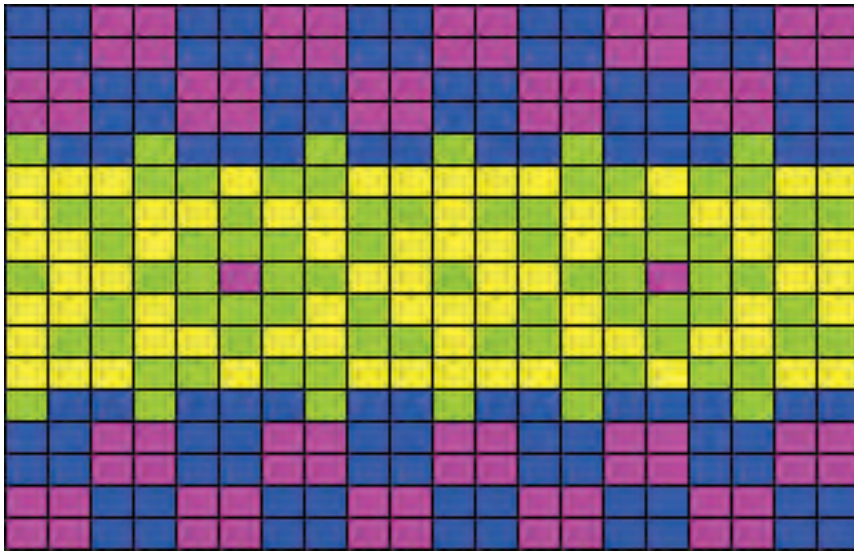
Blue, color 848 (A)

Green, color 887 (B)

Yellow, color 820 (C)

1 Size 6 US/ 4mm, 16 inch circular needle

## Chart



With MC, cast on 120 stitches. Work in the round, working in a k2, p2 rib for 4 rounds. Work chart beginning at lower right hand corner. There are 6 repeats of the chart in each round. Since you are working in the round, the chart will always be read from right to left. Work all 17 rounds of chart, then 4 more rounds of rib, beginning with p2, k2. Bind off in pattern, then work in ends. Block lightly.