



W416

Luna Paints Lightning Lace Market Bag



Designed by Anastasia Blaes

Luna Paints Lightning Lace Market Bag

By Anastasia Blaes

Finished Measurements

20" / 51 cm wide x 13½" / 34 cm long (unfilled; laid flat)

****Bag will stretch considerably when it is in use****

Materials

328 yds Cascade Luna Paints, (164 yds / 150 m per 3½ oz / 100 gram skein; 100% Peruvian Cotton) Shade # 9994: 2 skeins

Set of five Size 9 / 5.5 mm double-pointed knitting needles (dpns)

Tapestry needle

Gauge

14 sts and 21 rows = 4" in Lightning lace patt st

To save time, take time to check gauge and adjust needle size as needed

Abbreviations

K2tog: Knit two stitches together

Ssk: Slip two stitches as if to knit, then knit the two stitches together through the back loops.

Designer Notes

- Feel free to use the two circ or magic loop methods rather than working with dpns; just make sure to have two dpns on hand for the drawstring.
- If your bag's top opening seems tight, try going up a needle size. It's important that the opening is loose enough for the items you want to put in it.
- Instead of using the i-cord technique to make the drawstring, here's an alternative: CO 48" worth of sts. Immediately BO all sts—then proceed as directed above. This drawstring will stretch out more than i-cord.

Market Bag

Border:

CO 88 sts. Divide sts onto 4 dpns. Join work into a circle, being careful not to twist. Place st marker to indicate beg of rnd if desired.

Rnds 1, 3, 5, and 7: Knit around.

Rnds 2, 4, and 6: Purl around.

Rnd 8 (eyelet rnd): *Yo, k2tog, rep from * around.

Rnds 9, 11, and 13: Knit around.

Rnds 10, 12, and 14: Purl around.

Begin Lace:

Work rnds 1-16 four times as written below, (or refer to Lightning Lace Chart, see p. 2), then work rnds 1-8. (72 rows)

Rnd 1 and all odd-numbered rnds: Knit around.

Rnds 2, 4, 6, and 8: *(Yo, K2tog) four times, k3, rep from * around.

Rnds 10, 12, 14, and 16: *(Ssk, yo) four times, k3, rep from * around.

Shape Base:

Rnd 1: Knit around

Rnds 2 and all even-numbered rnds: Purl around.

Rnd 3: *K9, k2tog, rep from * around. (80 sts rem)

Rnd 5: *K8, k2tog, rep from * around. (72 sts rem)

Rnd 7: *K7, k2tog, rep from * around, (64 sts rem)

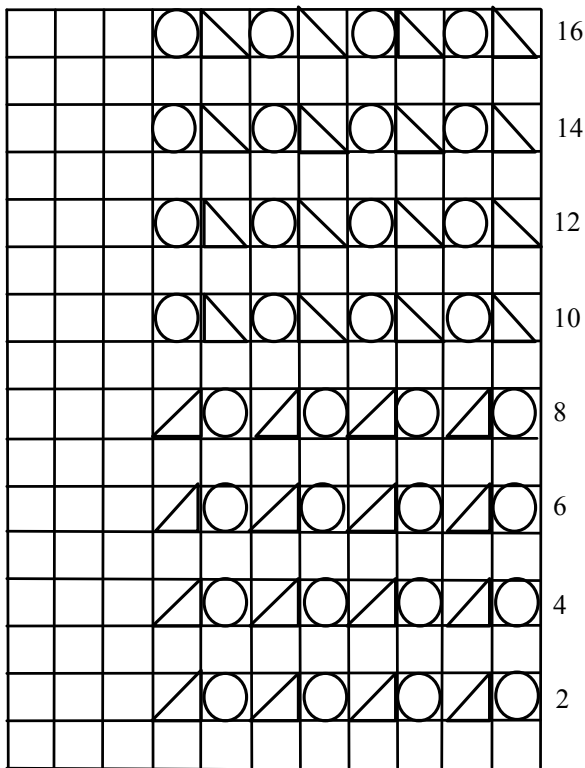
Continue as above, decreasing 8 sts every other rnd until 8 sts rem. Cut yarn, leaving a 6" tail. Thread tapestry needle with tail and insert through rem sts. Pull to tighten. Weave in ends.

Drawstring:

Leaving a 4" tail, CO 3 sts with two dpns. Make i-cord for 48". BO, leaving a 4" tail for sewing.

Thread drawstring through eyelets at top of bag. Weave 4 inch tail through opposite end of drawstring and secure so that drawstring is now one continuous loop. Weave in all ends.

Lightning Lace Chart



Legend	
	Knit
	Yo
	K2tog
	Ssk