



DK223

Cascade 220 Sport  
Snowflake Cowl



Designed By Patti Waters

# 220 Sport Snowflake Cowl

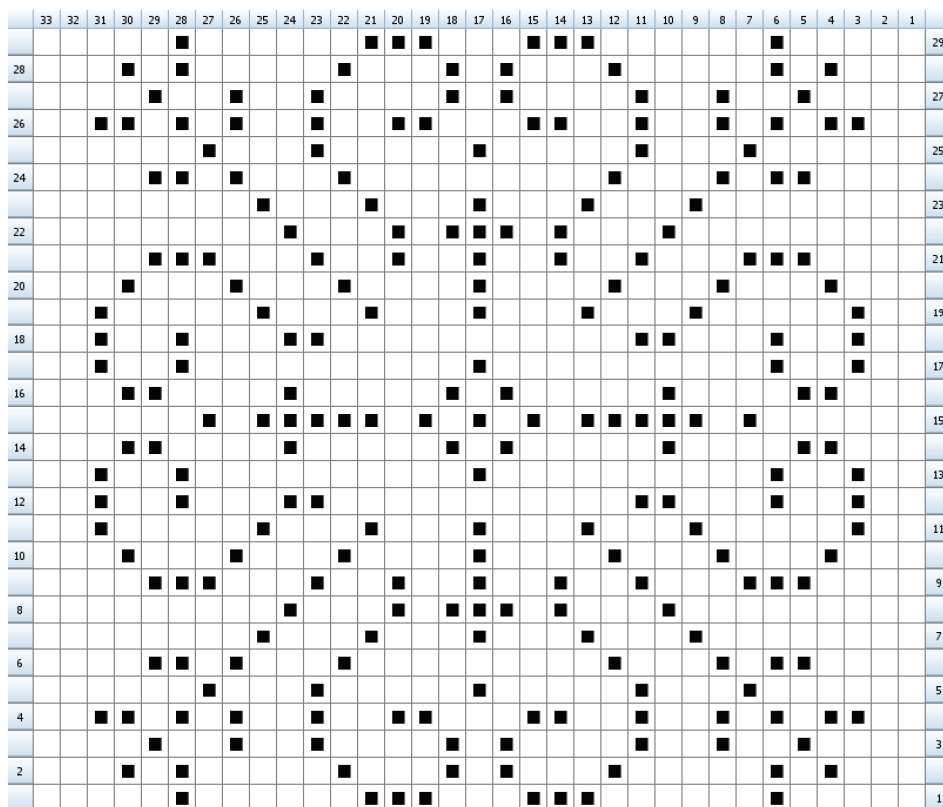
by Patti Waters

Materials: 2 Skeins Cascade 220 Sport, 1 Color # 8885 (MC) and 1 Color # 8401 (CC), 100% Wool, 150 m, 50 g, US # 6/4 mm circular (16" length or smaller)

Pattern:

With main color cast on 132 sts. Work in k2 p2 rib all the way around until piece measures 1". Work 4 rows in st st. Work 33 chart sts 4 times around, and work rows 1-29 of chart once. Work 4 rows st st. Work in k2 p2 rib for 1" and bind off all sts in rib.

Chart:



Legend:

- knit
- color1

Created in KnitVisualizer ([www.knitfoundry.com](http://www.knitfoundry.com))

knit = MC  
color 1 = CC