



W351

# Luna Paints

## I-Cord Cable Scarf with Detachable Hood



Designed by April Reis

## Luna Paints I-Cord Cable Scarf with Detachable Hood

### Materials

Yarn: Cascade Luna Paints, 3 – 4 skeins #9831

Needles: US-8 straight

DPN US-8

Miscellaneous: Stitch holders, at least six (8) needed

Stitch Markers

Tapestry Needle

Buttons: (7) 5/8" buttons and (2) 1-5/8" buttons

### Gauge

16 stitches x 24 rows = 4" in stockinette stitch on size US-8

### Stitches

Stockinette: **Row 1:** Knit all stitches. **Row 2:** Purl all stitches. Repeat these two rows.

Seed Stitch: **Row 1:** K1, P1 to end. **Row 2:** P1, K1 to end. Repeat these two rows.

Pattern Stitch: 5 stitches in Seed Stitch, 18 stitches in Stockinette, 5 stitches in Seed Stitch

YO: Yarn Over

BO: Bind Off

CO: Cast On – for buttonholes, use a Cable Cast On

C4B: Sl 2 sts onto cable needle, hold at back, k2, then k2 from cable needle

C4F: Sl 2 sts onto cable needle, hold to the front, k2, then k2 from cable needle

C3BP: Sl 1 on to cable needle, hold at back, k2, then p1 from cable needle

C3FP: Sl 2 on to cable needle, hold to front, p1, then k2 from cable needle

I-cord: To make I-cord, using DPN, K4, then slip the stitches to the opposite end of the needle.

Do Not Turn the Work. Pulling the working yarn taught behind the stitches knit them again.

Repeat.

### Notes

This scarf is worked in sections consisting of knitted panels and I-cord. The I-cord will be braided to mimic the knitted cable panels.

There is an option given for buttonholes on the back of the pocket. These are for the headphone wires for an iPod.

### Pattern Directions

Cast on 28 stitches.

**The first five (5) and last five (5) stitches will always be worked in Seed Stitch.** They are not shown on the main cable chart or in the written cable pattern. To make this easier to remember you may want to place a stitch marker after the first 5 stitches and before the last 5 stitches.

### Instructions

Work 5 rows in Seed Stitch.

Work 3 rows in Pattern Stitch

Next Row: 5 stitches in Seed Stitch, K 7, BO 4, K 7, 5 stitches in Seed Stitch

Next Row: 5 stitches in Seed Stitch, K 7, CO 4, K 7, 5 stitches in Seed Stitch

Work in Pattern Stitch for 26 rows.

Work 5 rows in Seed Stitch.

Next Row: K all stitches. This row will be the bottom of the pocket.

Work 23 Rows in Pattern Stitch, BUT begin with Purling the 18 center stitches.

*OPTIONAL:* On Next Row you can add the hole for a headphone wire as follows... 5 stitches in Seed Stitch, K8, BO 2, K8, 5 stitches in Seed Stitch. Next Row: 5 stitches in Seed Stitch, K8, CO 2, K8, 5 stitches in Seed Stitch. Then continue in Pattern stitch for 19 more rows.

If not adding the headphone hole, continue in Pattern stitch for an additional 21 rows.

We will now start the I-Cord cables.

### ***Working I-Cord***

Place stitches on holders as follows:

1. 5 seed stitches
2. 3 stockinette stitches
3. 3 stockinette stitches
4. 3 stockinette stitches
5. 3 stockinette stitches
6. 3 stockinette stitches
7. 3 stockinette stitches
8. 5 seed stitches

The 2 outer holders will continue to be worked in Seed Stitch. The 6 inner holders will be I-cord. Using your DPN, work each holder as follows:

Seed Stitch holder: Work in Seed stitch until each section is 17" long. The last row worked is a RS row.

Stockinette holder: Work in I-cord until each cord is 18" long.

Add a second ball of yarn to work the remaining I-cords, and the last garter stitch panel, cutting the end yarn after each is complete. These ends will be woven in later.

**Do not cut the yarn from the last seed stitch panel worked.** This yarn will be your working yarn when the stitches are reconnected.

### ***Braiding the I-Cord***

You will need to weave the I-cord before going onto the next step. The last page of this pattern is a color-coded chart. Starting at the bottom of the chart, cross the I-cords accordingly, taking note of which "color" is on top.

When you have completed the braiding, place all the stitches in the order they appear back on your needles, making sure your working yarn is on the correct side of the needle (if working with straights). Remember you will be starting on a wrong side row.

### ***Continuing the pattern***

Make sure as you rejoin each stitch that you pull the loose ends of the I-cord tight.

You will now begin the solid section of the scarf.

☑ Continue to Work the first and last **4 stitches** in Seed Stitch.

☑ For a **shorter scarf**, work the Cable Chart until the solid section measures 18".

☑ For a scarf long enough to wrap around your neck and still have the pockets near your hips, work the Cable Chart until the solid section measures 50 - 52"

☐ When the solid section is complete, divide the stitches back onto stitch holders, the same as before. Work the I-cord and weaving again.

You will now begin the last pocket.

When you start the Pattern Stitch portion again, beginning the middle stitches by Knitting.

If adding the optional headphone wire hole: Work in Pattern Stitch for 19 rows. Next Row: 5 stitches in Seed Stitch, K8 BO 2, K 8, 5 stitches in Seed Stitch. Next Row: 5 stitches in Seed Stitch, K8, CO 2, K8, 5 stitches in Seed Stitch. Work in Pattern Stitch for 23 more rows.

If you are not adding the headphone hole: Work in Pattern Stitch for 44 rows.

Next Row for all: K all stitches

Work 5 Rows in Seed Stitch all stitches

Work in Pattern Stitch for 26 rows.

Next Row: 5 stitches in Seed Stitch, K 7, BO 4, K 7, 5 stitches in Seed Stitch

Next Row: 5 stitches in Seed Stitch, K 7, CO 4, K 7, 5 stitches in Seed Stitch

Work 3 Rows in Pattern Stitch.

Work 5 Rows in Seed Stitch.

Bind Off. Fold the pockets and seam the outside edges.

### **Finishing**

Working on the wrong side of the scarf, and using the color-coded weaving chart as a guide, you will now tie the edges of the I-cord to the Seed Stitch panels.

1. Cut pieces of yarn approximately 5" – 6" in length; these will be the ties.
2. Using the color chart, notice there are several points where the cable "touches" the edge of the pattern. These are the points you will tie to the Seed Stitch.
3. Picking up one K stitch on the cable (2 "V's"), and two of the Seed Stitches, slip the yarn through using your tapestry needle, and tie knot in the yarn. Weave the end into the I-cord. Continue until all edges are attached.

### **Hood Instructions**

CO 76

Work 2 Rows in Seed Stitch.

*Buttonhole Row:* Continue working all stitches in Seed Stitch. Work as follows:

4 stitches, YO 12 stitches, YO 12 stitches, YO 10 stitches, YO 10 stitches, YO 12 stitches, YO 12 stitches, YO 4 stitches

*Next Row:* Continue in Seed Stitch, drop the YO.

Work 1 more row in Seed Stitch.

Work 60 Rows in Pattern Stitch.

### **Finishing the Hood - Options**

Option 1. Bind off. Fold so the BO off edge is together (seed stitches will from the front), and seam.

Option 2. Divide the stitches in half and transfer to DPN. Use either a 3-needle bind off or Kitcheners stitch to close the seam.

Buttons will be sewn onto the hood. Begin by folding the scarf in half. The first button will be sewn at the middle point on the scarf. After sewing the first button, attached the hood. From here you can mark where each of the remaining buttons will need to be sewn. **Written** Follow instructions as written above for the Chart. NOTE: the Seed Stitches are not show on the written or charted pattern.

<i>Row</i>	<i>1</i>	P2, C4F, P2, C4F, P2, C4F, P2
<i>Row</i>	<i>2</i>	K2, P4, K2, P4, K2, P4, K2
<i>Row</i>	<i>3</i>	P1, C3BP, C3FP, C3BP, C3FP, C3BP, C3FP, P1
<i>Row</i>	<i>4</i>	K1, P2, K2, P4, K2, P4, K2, P2, K1
<i>Row</i>	<i>5</i>	P1, K2, P2, C4B, P2, C4B, P2, K2, P1
<i>Row</i>	<i>6</i>	K1, P2, K2, P4, K2, P4, K2, P2, K1
<i>Row</i>	<i>7</i>	C3BP, P1, C3BP, C3FP, C3BP, C3FP, P1, C3FP
<i>Row</i>	<i>8</i>	P2, K2, P2, K2, P4, K2, P2, K2, P2
<i>Row</i>	<i>9</i>	K2, P2, K2, P2, C4B, P2, K2, P2, K2
<i>Row</i>	<i>10</i>	P2, K2, P2, K2, P4, K2, P2, K2, P2
<i>Row</i>	<i>11</i>	C3FP, P1, C3FP, C3BP, C3FP, C3BP, P1, C3BP
<i>Row</i>	<i>12</i>	K1, P2, K2, P4, K2, P4, K2, P2, K1
<i>Row</i>	<i>13</i>	P1, K2, P2, C4B, P2, C4B, P2, K2, P1
<i>Row</i>	<i>14</i>	K1, P2, K2, P4, K2, P4, K2, P2, K1
<i>Row</i>	<i>15</i>	P1, C3FP, C3BP, C3FP, C3BP, C3FP, C3BP, P1
<i>Row</i>	<i>16</i>	K2, P4, K2, P4, K2, P4, K2

Follow the instructions as written above for the Chart.

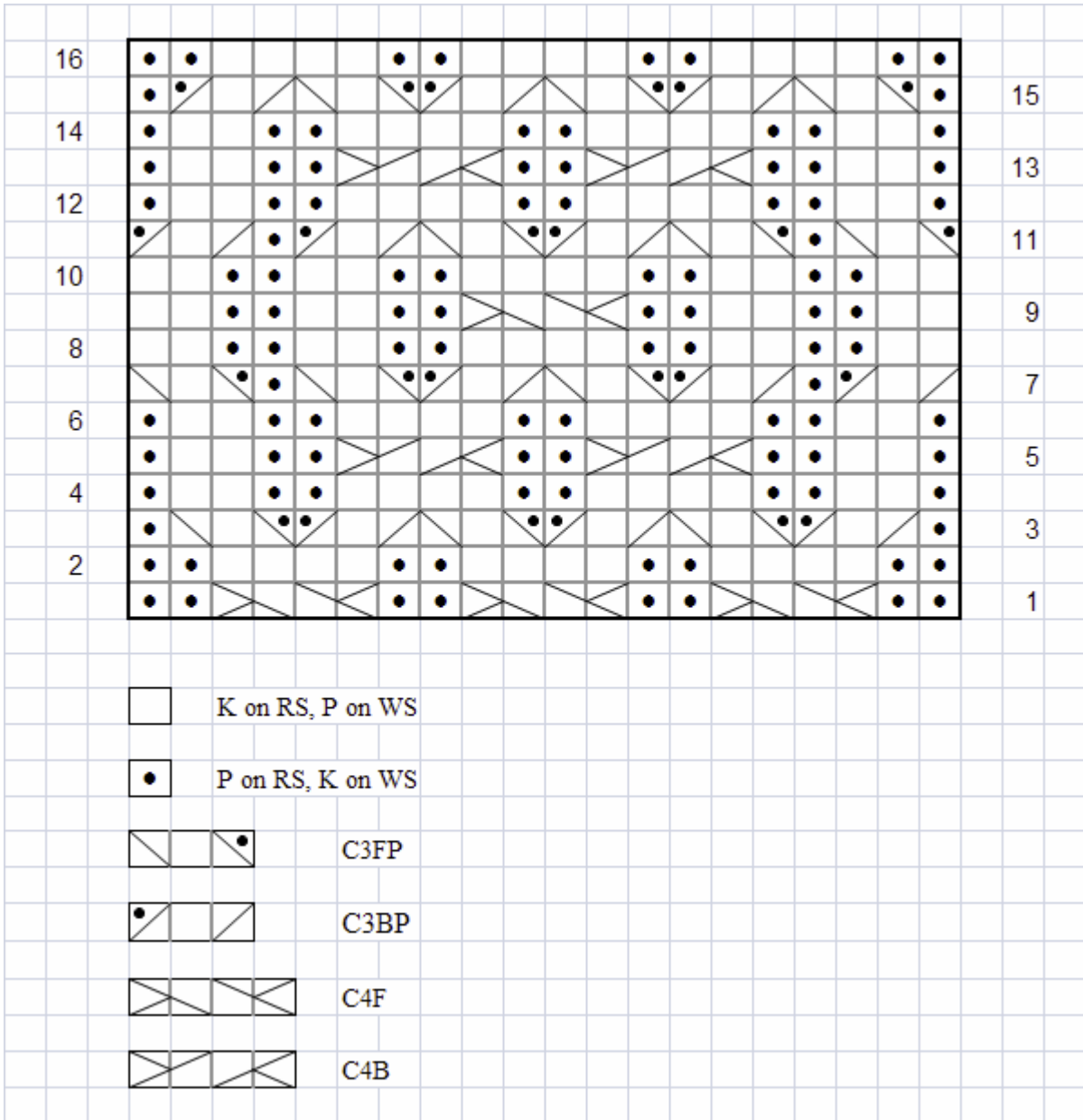
**Cable Stitches:**

C4B: Sl 1 2 sts onto cable needle, hold at back, k2, then k2 from cable needle

C4F: Sl 1 2 sts onto cable needle, hold to the front, k2, then k2 from cable needle

C3BP: Sl 1 st on to cable needle, hold at back, k2, then p1 from cable needle

C3FP: Sl 2 sts on to cable needle, hold to front, p1, then k2 from cable needle  
 © April Reis 2011



# Weaving Chart

