



W414

Luna Paints Flowing Lace Scarf



Designed by Anastasia Blaes

Luna Paints Flowing Lace Scarf

By Anastasia Blaes

Finished Measurements

6½" / 16.5 cm wide x 58" / 147.5 cm long

Materials

300 yds Cascade Luna Paints (164 yds / 150 m per 3½ oz / 100 gram skein; 100% Peruvian Cotton)

2 skeins of # 9792

Three Size 8 / 5 mm knitting needles

Tapestry needle

Gauge

16 sts and 24 rows = 4" in Flowing Lace patt st (after blocking)

To save time, take time to check gauge.

Abbreviations

K2tog: Knit two stitches together

Ssk: Slip two stitches as if to knit, then knit the two stitches together through the back loops.

Scarf:

CO 27 sts. Work rows 1-12 fourteen times as written below, (or refer to Flowing Lace Chart, see p. 2) then work rows 1-3. Do not bind off; place sts on st holder or a spare length of yarn. Make second side identical to first.

Rows 1, 3, and 5 (RS): K2, *yo, ssk, k1, k2tog, yo, k1, rep from * across to last 7 sts, end yo, ssk, k1, k2tog, yo, k2.

Row 2 and all WS rows: K2, purl across to last 2 sts, end k2.

Rows 7, 9, and 11: K2, *k2tog, yo, k1, yo, ssk, k1, rep from * across to last 7 sts, end k2tog, yo, k1, yo, ssk, k2.

Row 12: K2, purl across to last 2 sts, end k2.

Finishing

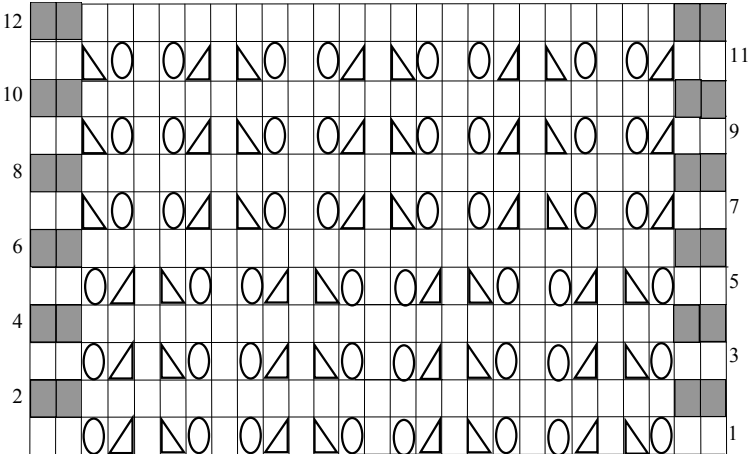
WS facing out, use three-needle BO to connect the two sides tog loosely. Weave in all ends, then wet-block carefully to measurements.

Designer Notes:

- If you find you are working your three-needle BO too tightly and the lace looks all wrinkled at the join, try using a larger needle as your third needle, the needle that you hold in your right hand.

If you are uncomfortable with the three-needle BO technique, you may bind off all sts normally after the last row worked, then seam carefully together. Just make sure that you bind off and seam loosely, using larger needles if necessary.

Flowing Lace Chart



Legend

- K on RS, P on WS
- P on RS, K on WS
- YO
- SSK
- K2tog