

Greenland  
Women's Textured Sleeveless Pullover



Designed by Melissa Leapman

# Greenland Woman's Textured Sleeveless Pullover

Designed by Melissa Leapman

## Skill Level

Intermediate

## Sizes

Small (Medium, Large, Extra-Large, Extra-Extra Large). Instructions are for smallest size, with changes for other sizes noted in parentheses as necessary.

## Finished Measurements

Bust: 34 (37, 40, 43 ½, 46 ½)"

Total length: 22 (22 ½, 23, 23 ½, 24)"

## Materials

- .. Cascade Yarn's *Greenland*, 6 (7, 8, 9, 10) balls of #3517
- .. One pair *each* of sizes 6 and 8 knitting needles or size needed to obtain gauge
- .. One circular knitting needles, size 6
- .. Cable needle

## Gauge

In Textured Patt with larger needles, 21 sts and 28 rows = 4". **To save time, take time to check gauge.**

## Stitch Patterns

**Rib Pattern** (*mult 4 + 2 sts*)

**Row 1 (RS):** \*P2, K2. Repeat from \* across, ending row with P2.

**Row 2:** \*K2, P2. Repeat from \* across, ending row with K2.

Repeat Rows 1 and 2 for patt.

**Textured Cable Pattern** (*mult 8 + 2 sts*)

See chart.

## Back

With smaller needles, CO 90 (98, 106, 114, 122) sts.

Beg Rib Patt, and work even until piece measures approx 2 ½" from beg, ending after WS row.

Change to larger needles, beg Textured Cable Patt, and work even until piece measures approx 14" from beg, ending after WS row.

### **Shape Armholes**

BO 5 (5, 6, 7, 8) sts at beg of next two rows, BO 2 (3, 3, 3, 4) sts at beg of next two rows, then dec 1 st each side every row 6 (8, 10, 12, 12) times—64 (66, 68, 70, 72) sts rem.

Cont even in patt until piece measures approx 21 (21 ½, 22, 22 ½, 23)" from beg, ending after WS row.

### **Shape Shoulders**

BO 4 sts at beg of next six rows, then BO 2 (3, 4, 5, 6) sts at beg of next two rows—36 sts rem.

BO.

## **Front**

Work same as back until piece measures approx 15 ½ (16, 16 ½, 17, 17 ½)" from beg, ending after WS row.

### **Divide for Slit**

**Next Row (RS):** Work across first 32 (33, 34, 35, 36) sts, join second ball of yarn and work patt as established across to end row.

Work both sides at once with separate balls of yarn, and cont even in patt as established until piece measures approx 19 (19 ½, 20, 20 ½, 21)" from beg, ending after WS row.

### **Shape Neck**

Work both sides at once with separate balls of yarn, and BO 12 sts each neck edge once, BO 4 sts each neck edge once, then dec 1 st each neck edge once—14 (15, 16, 17, 18) st rem each side.

Cont even until piece measures same as back to shoulders.

### **Shape Shoulders**

Work same as for back.

## **Finishing**

Block pieces to measurements.

Sew shoulder seams.

### **Neckband**

With RS facing and circular needle, beg at beg of first BO of right front neck shaping, and pick up and knit 102 sts.

Work rows of Rib Patt until band measures approx 3 ¼" from beg.

BO *loosely* in rib.

### Slit Edging

With RS facing and circular needle, pick up and knit 22 sts along left side of center front opening, then pick up and knit 22 sts along right side of center front opening.

**Next Row:** Knit to BO.

### Armbands

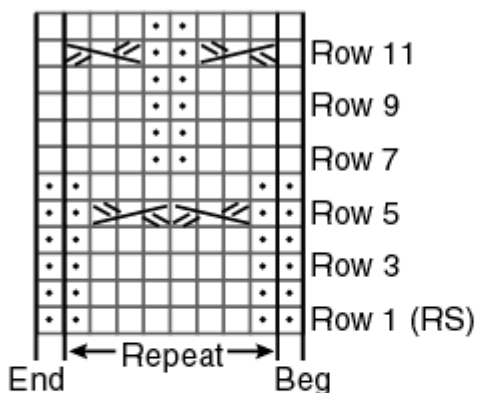
With RS facing and circular needle, pick up and knit 98 (102, 106, 110) sts along arm-hole.

Work rows of Rib Patt until band measures approx  $\frac{3}{4}$ " from beg.

BO *loosely* in rib.

Sew side seams.

Textured Cable Pattern  
(mult 8 + 2 sts)



KEY □ = K on RS; P on WS

• = P on RS; K on WS

≧≧ = Slip 2 sts onto cn and hold in back; K1; K2 from cn

≦≦ = Slip next st onto cn and hold in front; K2; K1 from cn

