



DK277

220 Superwash® Sport & Heritage Silk

Earrach Vest



Designed by Jean Clement

# 220 Superwash® Sport & Heritage Silk Earrach Vest

Designed by Jean Clement

**Women's Size:** XS (S, M, L, XL) inches

## Finished Measurements

**Bust:** 33 1/2 (36 3/4, 40, 43, 46) inches

**Length:** 18 1/2 (19 1/2, 20 1/4, 21, 21 3/4) inches

## Materials

- Cascade Yarns *220 Superwash® Sport* (sport weight; 100% superwash merino wool; 136 yds/50g per hank) ~ 4 (5, 5, 6, 6) hanks; #841 Moss (MC)
- Cascade Yarns *Heritage Silk* (fingering weight; 85% merino superwash wool, 15% mulberry silk; 437 yds/100g per hank) ~ 1 hank; #5618 White (CC)
- US 7 (4.5mm) 24 and 32-inch circular needle, **or size to obtain gauge** (circular needle used to accommodate body sts; larger sizes may prefer to use the longer needle; longer needle used for scarf collar)
- US 7 (4.5mm) short straight needles or 2-dpns
- US 8 (5.0mm) 24-inch circular needle
- Stitch markers
- Stitch holders or scrap yarn
- Tapestry needle

## Gauge

20 1/2 sts and 26 rows = 4 inches in St st using smaller size needle

**Save time, check your gauge**

## Border Pattern Stitch

Multiple of 8 sts + 5

**Rows 1 and 3 (WS):** K2, purl to last 2 sts, k1, sl 1 wyif.

**Row 2:** K2, \*k2, k2tog, yo, k1, yo, ssk, k1; rep from \* to last 3 sts, k2, sl 1 wyif.

**Row 4:** K2, \*k1, k2tog, yo, k3, yo, ssk; rep from \* to last 3 sts, k2, sl 1 wyif.

Rep Rows 1-4 for patt.

## Pattern Notes

1. Instructions are given for the smallest size, with larger sizes in parentheses. If only one number is given, it applies to all sizes.
2. Vest is worked in one piece to the armholes, and then divided to work the fronts and back separately.
3. Cast on used for sample vest is a narrow tubular cast on. Any elastic cast on may be used.
4. First and last 2 sts are neckline edge sts. Maintain these sts as k2 at the beg of a row, and k1, sl 1 wyif at the end of a row when working in St st.
5. When using CC held double to work armhole trim, use one strand from the center and one from the outside of ball.
6. Scarf collar is worked separately and sewn to vest neckline.

## Vest

With larger size 24-inch circular needle and MC, cast on 173 (189, 205, 221, 237) sts.

Work Border patt for 2 1/2 inches.

**Next:** Change to smaller size 24-inch circular needle and St st, pm for vest sides as follows: Work 44 (48, 52, 56, 60) sts, pm, work 85 (93, 101, 109, 117) sts, pm, work to end.

Work even, keeping 2 sts each side as edge sts until vest measures 7 3/4 (8 1/4, 8 1/2, 8 3/4, 9) inches from cast on, or to desired length before beginning neckline shaping.

## Neckline shaping

*Work decreases 2 sts in from each edge using ssk at the beg of a row and k2tog at the end of a row.*

Dec 1 st each side every other RS row 3 times - 167 (183, 199, 215, 231) sts.

## Divide for fronts/back

*Once the fronts & back are divided, the armhole edge sts are worked in St st - only the neckline sts are worked in the slip st patt.*

K2, ssk, knit to 4 (5, 5, 7, 8) sts before first marker, bind off 8 (10, 10, 14, 16) sts removing marker, knit to 4 sts before second marker, bind off 8 (10, 10, 14, 16) sts removing marker, knit to last 4 sts, k2tog, k1, sl 1 wyif.

Place 36 (39, 43, 45, 48) right front sts and 77 (83, 91, 95, 101) back sts on separate holders.

## Left front

*Keeping track of the rows worked will help insure both fronts and back are the same length.*

Continuing in St st and maintaining 2 sts at neckline edge in established patt, dec 1 st at neckline edge every other RS row 6 (6, 9, 8, 9) times, then every 4th RS row 5 (5, 4, 5, 5) times.

**At the same time** bind off 0 (2, 2, 2, 2) sts at the beg of each RS row 0 (1, 2, 2, 3) times, then dec 1 st at armhole edge each RS row 4 (3, 3, 3, 3) times - 21 (23, 23, 25, 25) sts remain after all dec's are completed.

Work even until armhole measures 8 3/4 (9 1/4, 9 3/4, 10 1/4, 10 3/4) inches, ending after a WS row. Place all sts on holder.

## Right front

Join yarn to beg a WS row. With smaller size 24-inch needle, work neckline dec as for Left front and **at the same time** bind off 0 (2, 2, 2, 2) sts at the beg of each WS row 0 (1, 2, 2, 3) times, then dec 1 st at armhole edge each RS row 4 (3, 3, 3, 3) times - 21 (23, 23, 25, 25) sts remain after all dec's are completed.

Work even until armhole measurement matches Left front, ending after a WS row. Place all sts on holder.

## Back

*Work decreases 1 st in from each edge, using ssk at the beg of a row and k2tog at the end of a row.*

Join yarn to beg a WS row. With smaller size 24-inch needle and working all sts in St st, bind off 0 (0, 2, 2, 2) sts at the beg of next 0 (0, 2, 2, 4) rows, then dec 1 st each side every RS row 2 (3, 4, 4, 4) times - 73 (77, 79, 83, 85) sts.

Work even until back measures 1 row shorter than fronts, ending after a RS row.

**Next (WS):** P21 (23, 23, 25, 25), bind off 31 (31, 33, 33, 35), p21 (23, 23, 25, 25).

Place shoulder sts on separate holders.

## Finishing

With RS tog, join shoulders using 3-needle bind off.

## Armhole trim

With smaller size 24-inch circular needle, CC held double and RS facing, beg at center underarm pick up and knit 96 (102, 106, 114, 120) sts evenly spaced around armhole, pm, join to work in the round.

Purl 1 rnd.

Bind off all sts.

Block vest.

### **Front tabs**

With short straight needles or dpns, MC and RS facing, pick up and knit 6 sts along front edge immediately below the first neckline dec, picking up sts between the 2nd & 3rd sts from the neckline edge.

Work St st for 2 1/2 inches, fold tab to the inside (WS tog) and sew live sts to inside along pick up line.

Weave all ends.

### **Scarf collar**

With 32-inch circular needle and CC held single, loosely cast on 243 (21, 267, 275, 283) sts.

**Rows 1 and 3 (WS):** K1, purl to last st, sl 1 wyif.

**Row 2:** K1, \*k2, k2tog, yo, k1, yo, ssk, k1; rep from \* to last 2 sts, k1, sl 1 wyif.

**Row 3:** K1, \*k1, k2tog, yo, k3, yo, ssk; rep from \* to last 2 st, k1, sl 1 wyif.

Rep Rows 1-4 until scarf collar measures 4 1/2 inches.

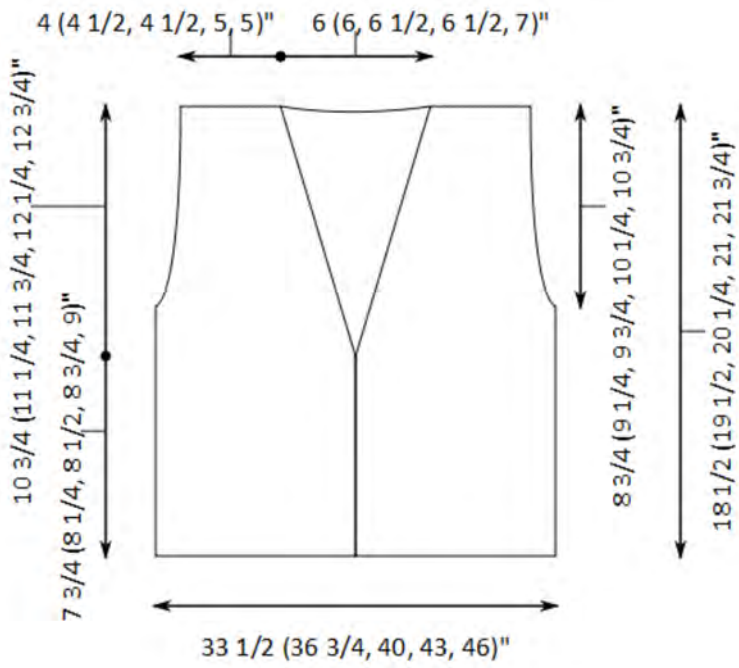
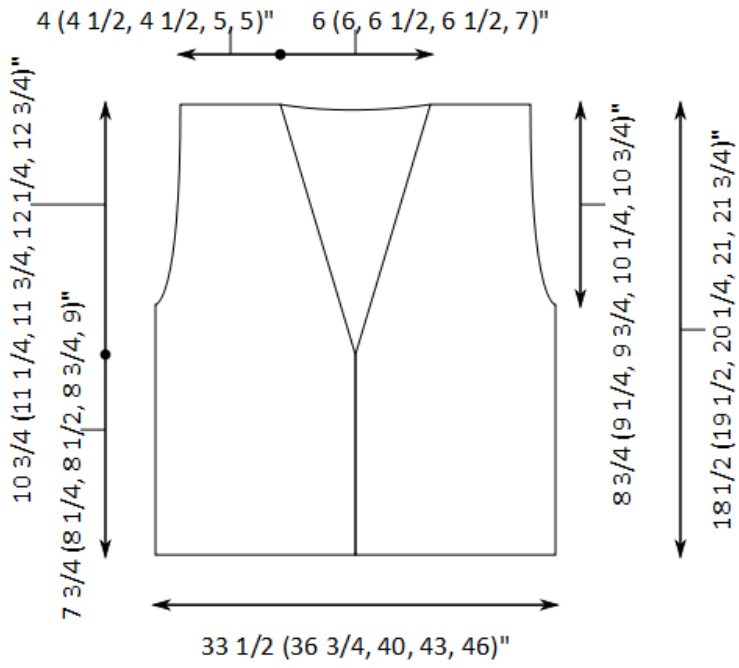
Bind off loosely, weave ends and block scarf collar.

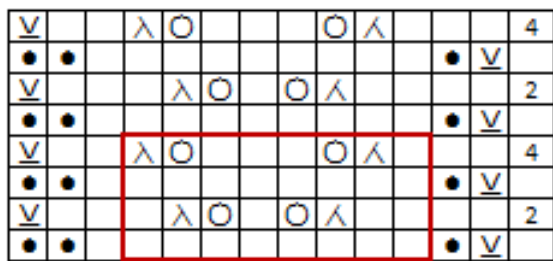
With WS of scarf collar to RS of vest and matching center of scarf collar to center of back neck, sew scarf collar to vest beg 1 1/2 inches above one front tab, continuing around neckline to 1 1/2 inches above opposite tab. Leave ends of scarf unattached. Ends of scarf collar may be threaded through tabs on the same side or opposite sides to serve as a 'closure' for the vest.

### **Abbreviations used**

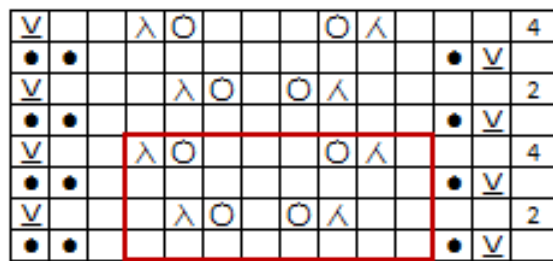
- 
- K/k = knit
- P/p = purl
- dec = decrease
- k2tog = knit two stitches together
- rep = repeat

- rnd = round
- patt = pattern
- pm = place marker
- sl = slip stitch
  
- ssk = slip 2 sts individually knitwise, slip both sts back to left needle in new orientation, knit sts together through the back loops
- st(s) = stitch(es)
- yo = yarn over
- wyif = with yarn in front
- MC = main color
- CC = contrast color
- RS = right side
- WS = wrong side





8 st / 4 row repeat



8 st / 4 row repeat

- Knit on RS, Purl on WS
- Knit on WS
- K2tog
- SSK
- YO
- slip 1 with yarn in front