



W180

Luna
Florentine Vest & Matching Rib Sweater
Model Version



Designed by Susie Bonell

Luna Florentine Vest & Matching Rib Sweater

Model Version

Edited by Susie Bonell

Materials: Cascade Yarn's Luna:

Color A: 11-14 skeins of Light Blue #720

Color B: 5-7 skeins of Dark Blue #721

Black Square = Purl on right side, Knit on wrong side.

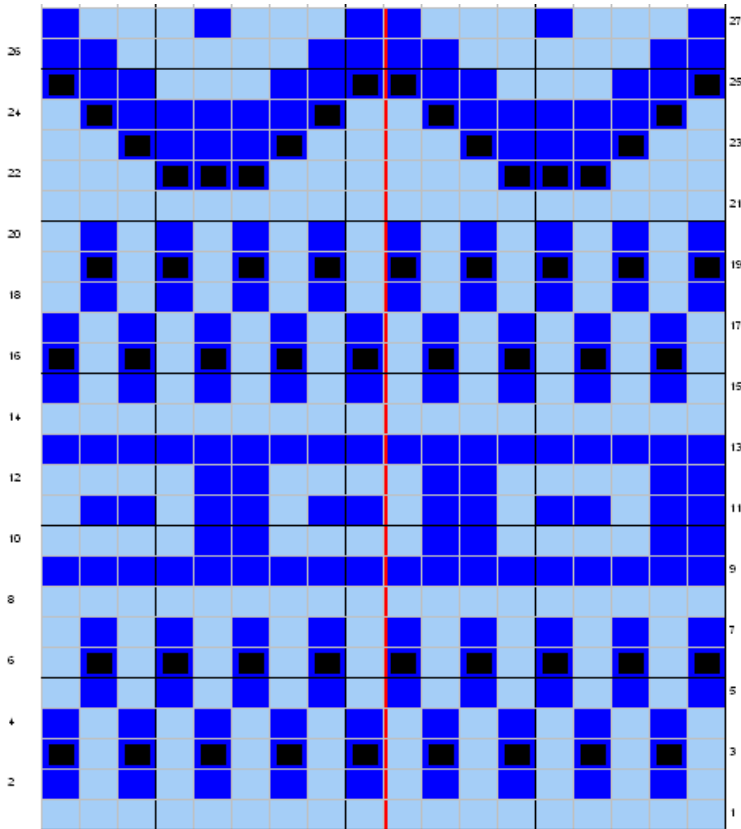
Needles size 7

Crochet Hook size H

Coat Hook for closure

Gauge: 4 ½ sts = 1"

Finished Measurements: 32", 40", 48"



VEST BACK

With color A cast on 72 (90, 108) sts. Purl one row then begin working chart above. Work until back measures 8 ½" (9 ½", 10") or desired length to underarm.

Keeping continuity of pattern bind off 6 sts on the next two rows. Work until armhole measures 9" (10", 10 ½") and bind off.

FRONTS

With Color A cast on 36 (45, 54) sts. Purl one row then begin working chart above for 2 (2 ½ ending at the red line, 3) repeats Work until front measures same as back to armhole and bind off 6 sts at the beginning of the next two rows.

Work until 4 ½" (5 ½", 5 ½") from armhole and begin neck shaping. At neck edge bind off 8 sts (all sizes), then 4 sts every other row 2 (3, 4) times. 20 (21, 22) sts.

Repeat for other side reversing shaping.

Sew shoulder seams and side seams.

With crochet hook and color B single crochet around body and armholes. Weave in all ends.

Sew hook at neck edge for closure. Steam slightly if needed.