



W227

Cascade 220®  
Cabled Hoodie



Designed by Melissa Leapman

**Cascade 220® Cabled Hoodie**  
**Designed by Melissa Leapman**

**Sizes**

Small (Medium, Large, 1X, 2X). Instructions are for smallest size, with changes for other sizes noted in parentheses as necessary.

**Finished Measurements**

Finished Bust Measurement (Zipped): 34 ¼ (36 ½, 44, 46 ½, 54)"

Finished Length: 22 ½"

**Materials**

- .. Cascade 220®, 9 (10, 11, 12, 13) hanks of #2450
- .. One pair each of sizes 7 and 8 knitting needles or size needed to obtain gauge
- .. One size 8 circular knitting needle, 16"
- .. One 20" separating zipper
- .. Two stitch holders

**Gauge**

In Cabled Patt with larger needles, 30 sts and 24 rows = 4". **To save time, take time to check gauge.**

**Cabled Patt** (*over mult. 18 + 14 sts*)

See chart.

**Garter St Patt**

**Patt Row:** Knit across.

**Back**

With larger needles, CO 122 (140, 158, 176, 194) sts.

Beg Cabled Patt, and cont even until piece measures approx 12 ½ (12 ½, 12, 12,

11 ½" from beg, ending after WS row.

### **Shape Armholes**

BO 7 (16, 25, 34, 34) sts at beg of next two rows—108 (108, 108, 108, 128) sts rem.

Cont even until piece measures approx 21 ½" from beg, ending after WS row.

### **Shape Shoulders**

BO 9 (9, 9, 9, 13) sts at beg of next four rows. BO 10 (10, 10, 10, 12) sts at beg of next two rows.

BO rem 52 sts for back of neck.

### **Left Front**

With larger needles, CO 68 (68, 86, 86, 104) sts.

Beg Cabled Patt, and work even until piece measures approx 12 ½ (12 ½, 12, 12, 11 ½)" from beg, ending after WS row.

### **Shape Armhole**

BO 7 (16, 25, 34, 34) sts at armhole edge once—61 (52, 61, 52, 70) sts rem.

Cont even until piece measures approx 20" from beg, ending after RS row.

### **Shape Neck:**

Slip first 16 (7, 16, 7, 16) sts onto holder, then work patt as established across to end row.

BO 8 (8, 7, 7, 7) sts at neck edge once, BO 3 sts at neck edge once, BO 2 sts at neck edge once, then dec 1 st at neck edge every row four times—28 (28, 29, 29, 38) sts rem.

Cont even in patt as established until piece measures same as back to shoulders, ending after WS row.

### **Shape Shoulders**

BO 9 (10, 10, 10, 13) sts at armhole edge twice.

Work one row even.

BO.

### **Right Front**

Same as left front *except* reverse all shaping.

### **Sleeves**

With larger needles, CO 68 sts.

Beg Cabled Patt, and inc 1 st each side every other row 10 (12, 22, 25, 37) times, then every fourth row 24 (22, 15, 12, 4) times, working new sts into patt as they accumulate—136 (136, 142, 142, 150) sts.

Cont even until piece measures approx 21  $\frac{1}{4}$  (21  $\frac{3}{4}$ , 21  $\frac{3}{4}$ , 21  $\frac{3}{4}$ , 20  $\frac{1}{2}$ )" from beg, ending after WS row.

BO.

### **Finishing**

Sew shoulder seams.

### **Hood**

With RS facing and larger needles, pick up and knit 16 (7, 16, 7, 16) sts from right front neck holder, 90 sts along neckline, and 16 (7, 16, 7, 16) sts from left front neck holder—122 (104, 122, 104, 122) sts total.

Cont even Cabled Patt as established (picking up where you left off on the first row of the front neck shaping) until hood measures approx 13" from beg, ending after WS row.

Divide rem sts onto two double-pointed needles, putting 61 (52, 61, 52, 61) sts onto each one, and holding WS facing each other, graft them tog.

### **Front Edging**

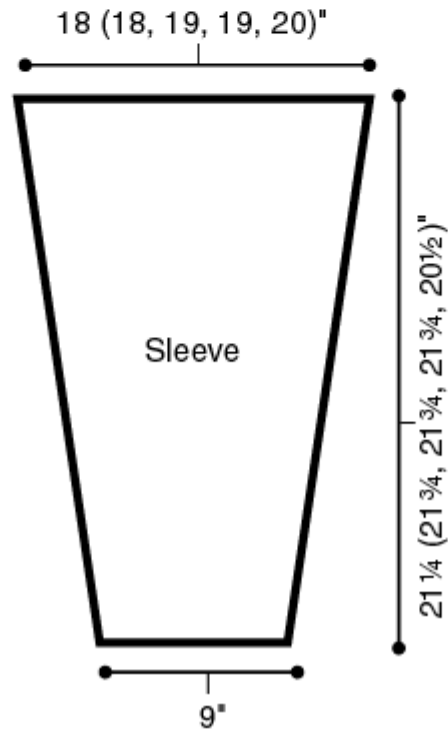
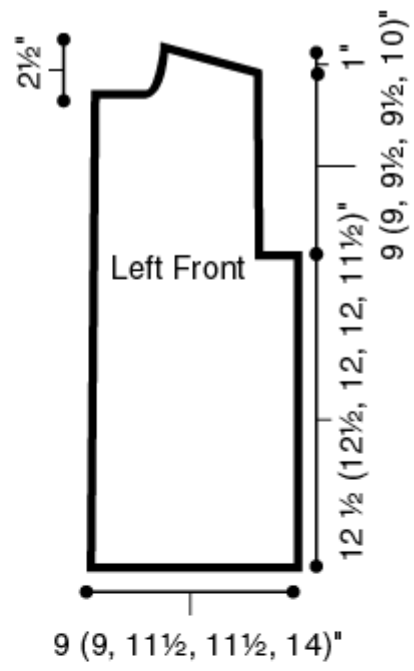
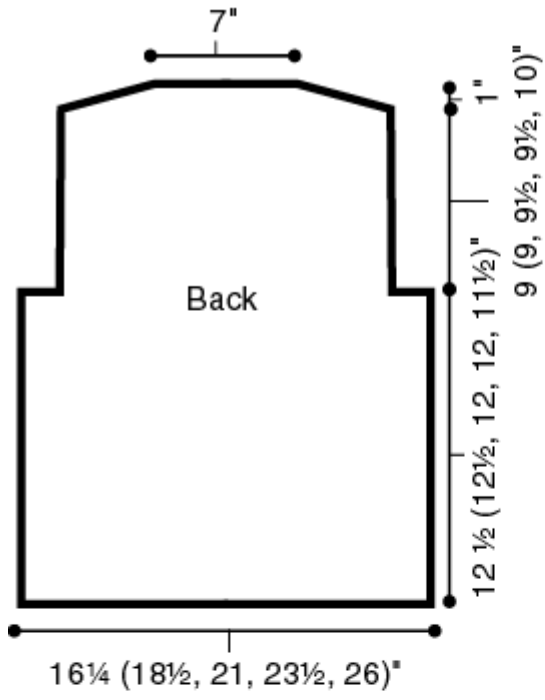
With RS facing and circular needle, pick up and knit 232 sts along right front edge, around front of hood, and along left front edge.

**Next Row:** Knit and BO.

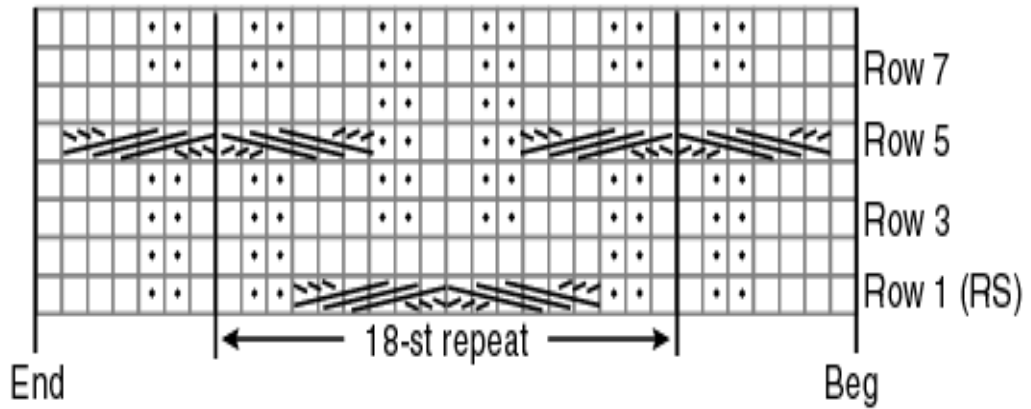
Set in sleeves.

Sew side and sleeve seams.

Sew in zipper.



### Cabled Pattern



KEY      □ = K on RS; P on WS

⏏ = Slip 3 sts to cn and hold in front; K3; K3 sts from cn

⏏ = Slip 3 sts to cn and hold in back; K3; K3 sts from cn

• = P on RS; K on WS