



A156

Cascade Jewel
Kisses Jacket



Designed By Nancy Rieck

Kisses

Design by *Nancy Rieck*

FINISHED MEASUREMENTS

Chest: 36(40, 44, 48, 52) inches. Options given to customize size.

Length: 22(22, 22, 25, 25) inches

MATERIALS

1552(1846, 1988, 2272, 2414) Yards Cascade Yarn, Jewel Hand Dyed.

40+ inch circular needles and 1 set DPN's size 6 U.S./4.25mm

DPN's or 2 circular needles for sleeves.

Or to gauge. Plus 2 sizes larger needle for binding off.

3 Large Buttons, hook and eye closures size 2 or above .

Notions Required: waste yarn or cable holders, markers, cable needle, tapestry needle.

GAUGE

16 sts x 24 rows = 4 inches in Stockinette (size 6 U.S./4.25mm)

Adjust needle size if necessary to obtain the correct gauge.

ABBREVIATIONS

M: Marker, **PM:** Place Marker, **SM:** Slip Marker, **RM:** Remove Marker,

SC31: Side Chart, **CCE16:** Collar/Cuff/Edge Chart, **KS6:** Kiss Chart, **BP26:** Back Panel Chart, **M1:**(Make One) lift st below up to LH needle and k into it, **M1P:**(Make One Purlwise) lift st below up to LH needle and p into it.

Repeat patterns in between **

Pattern Note: SC31 is worked for each side of Jacket. Your left facing side (as you look at the finished jacket) will have a button hole worked on Row 32. Sts 14, 15 & 16 will be BO. On the following chart repeat these sts will be CO back on Row 1 of chart. Work as many buttonholes as desired. Model shows 3 buttonholes. (See diagrams)

PATTERN STITCHES

I-cord

Worked with 2 DPN's.

K4, slide sts to right side of needle,.

PATTERN

CO 136 sts.

Set up row RS: Knit 1 Row.

Set up row WS: Sl1, Purl rest of row.

Collar

Row 1 (RS): S1, SC31, *CSE20*, SC31, k1.

Row 2 (WS): S1, SC31, *CSE20*, SC31, p1.

Work rows 1 and 2, 10 times. (20 rows CSE20 chart worked once).

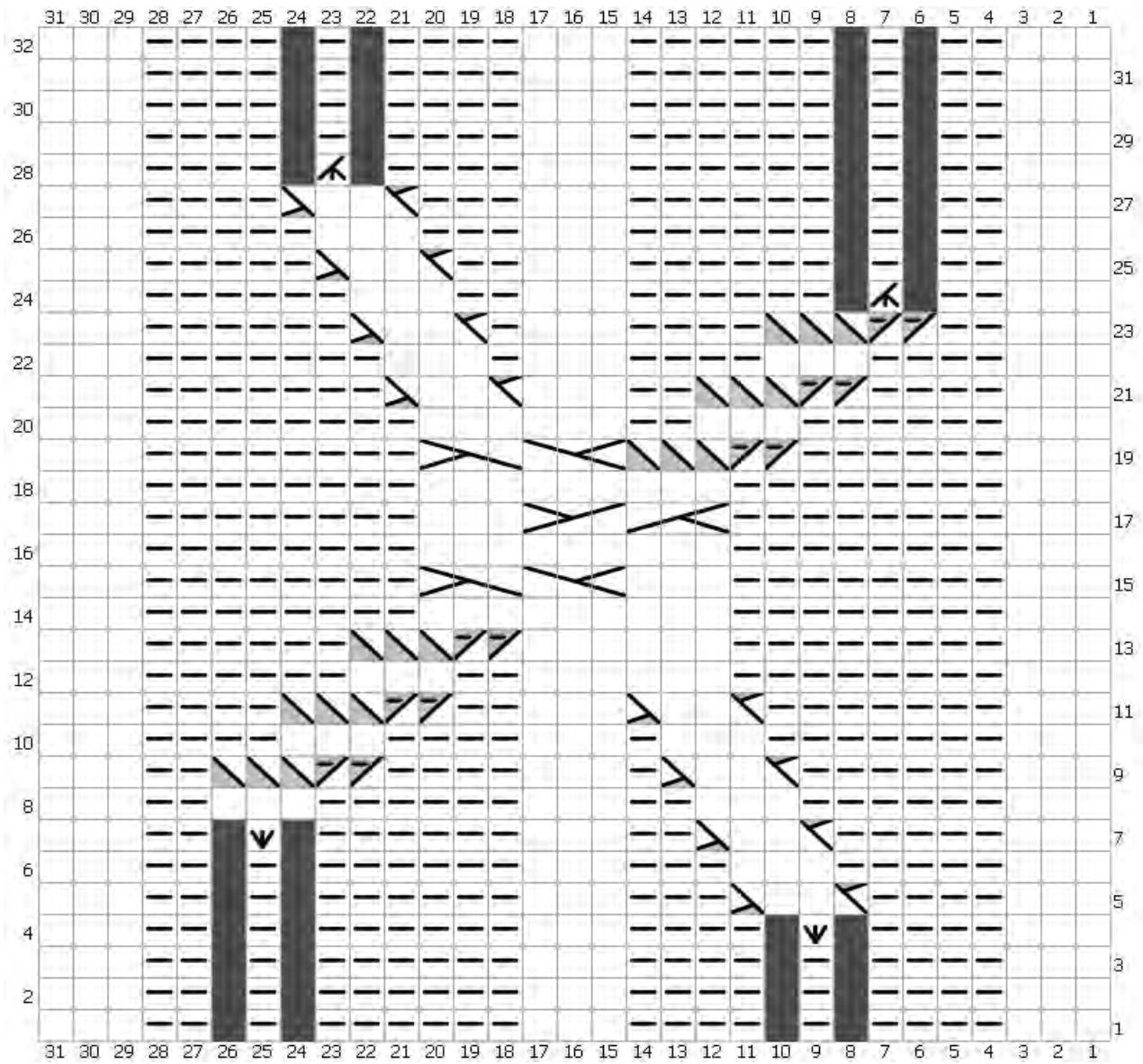
Row 1 (RS): S1, SC31, k8o, SC31, k1.

Row 2 **(WS): S1, SC31, P8o, SC31, p1.

Row 3: S1, SC31, p8o, SC31, k1.

Row 4: Sl 1, SC31, k4, PM, k8, PM, k56, PM, k8, PM, k4, SC31, p1.

Button Hole worked on Row 32 and following Row 1 of left facing SC31 chart. (See pattern note above.)



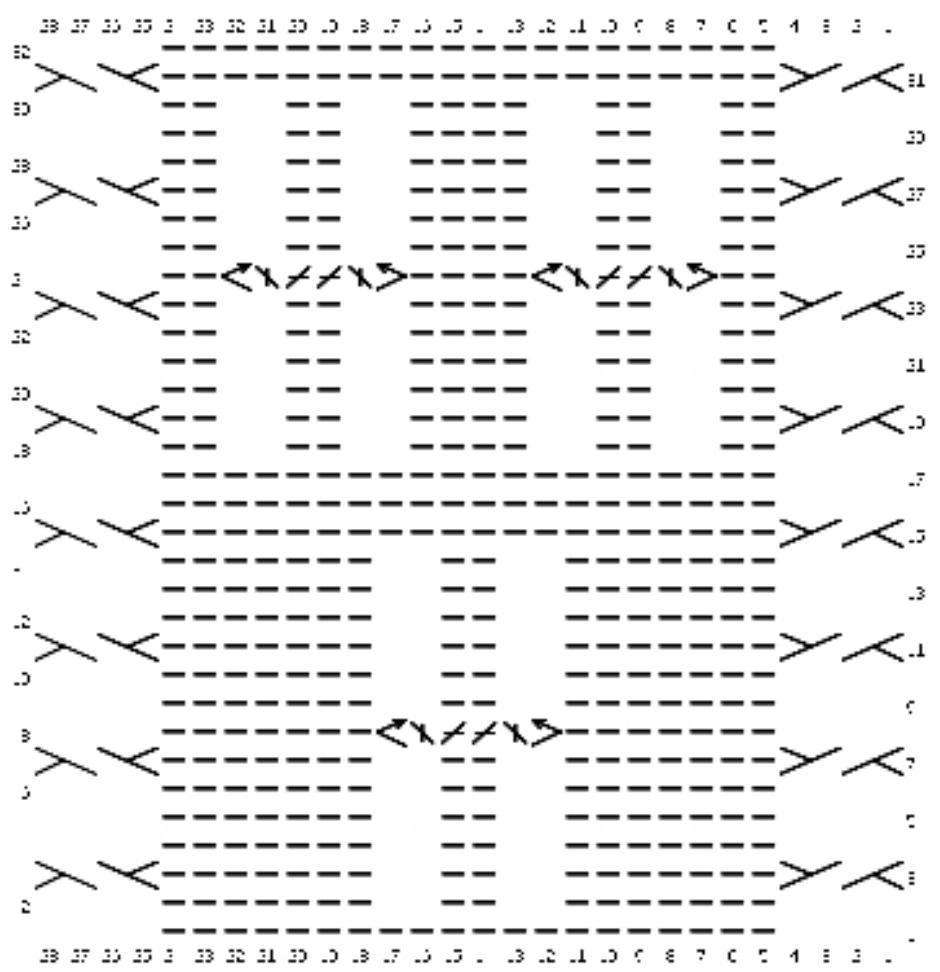
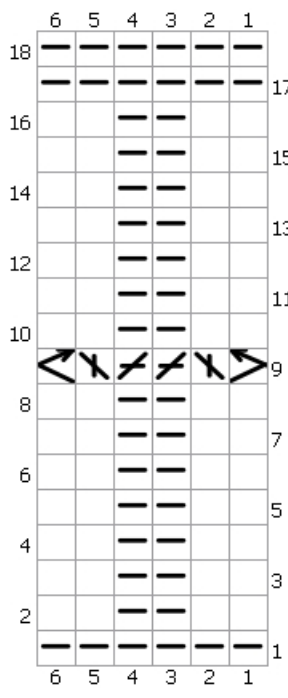
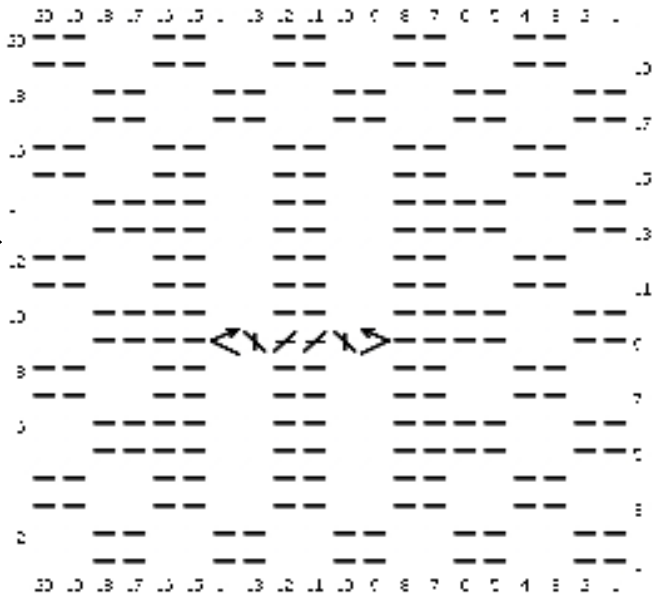
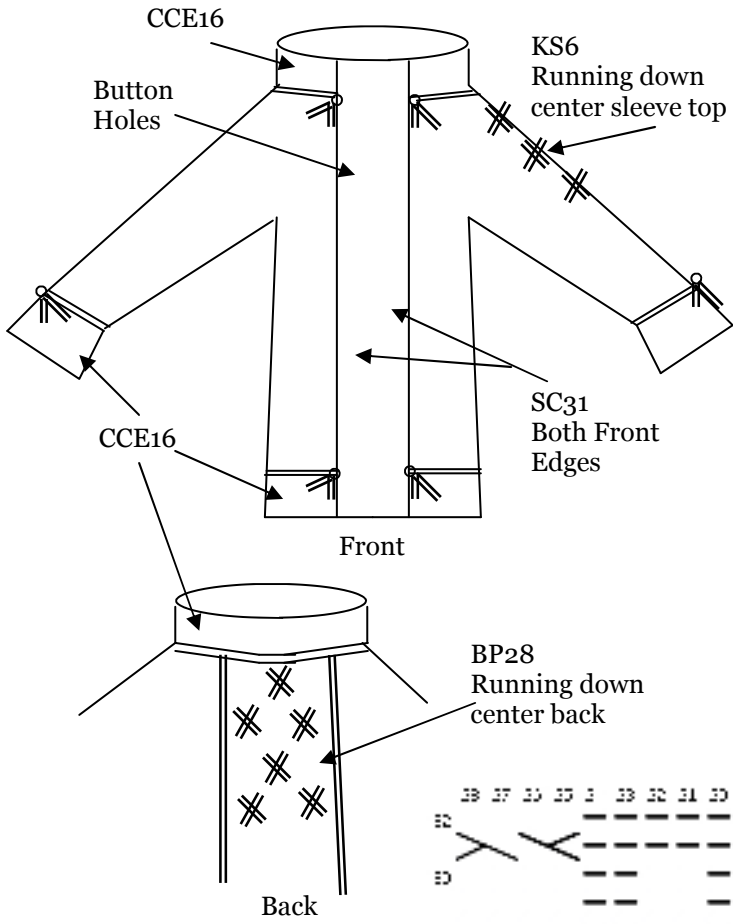
Side Chart

Central Double Inc.: P, k, p into back loop.
(increase 2 sts)

Button Hole: worked on left working, right facing of Side Chart. BO sts 15, 16, 17 on Row 32. CO sts on following Row 1.

Key:

	Cable Back 4 Slip 3 stitches to cable needle - front or back, knit next 2 stitches from cable needle.
	Cable Front 4 Slip 3 stitches to cable needle - front or back, knit next 2 stitches from cable needle.
	Knit on WS
	Purl on WS
	Purl
	Knit



Back Panel Chart

Side, Body and Sleeve Pattern

See diagram for pattern sts.

Increases are on each side of your markers on odd rows. 8 sts increased each increase row.

Increase sets of 10 rows are worked, then repeated until desired st count.

The 1st 2 rows are given below to get you started.

Row 1(RS): Sl 1, work SC31, p3, M1P, p1, SM, p1, M1P, work KS6, M1P, p1, SM, p1, M1P, p13, work BP28, p13, M1P, p1, SM, p1, M1P, work KS6, M1P, p1, SM, p1, M1P, p3, work SC31, p1.

Row 2: Sl 1, work SC31, k to M, SM, k to KS6, work KS6, K to M, SM, k to BP28, work BP28, k to M, SM, k to KS6, work KS6, k to M, SM, k to SC31, work SC31, p1.

Increase Set of 10 Rows:

Row 1: *SM, p1, M1P, work to 1 st before, M, M1P, p1*.

Row 2 and all even rows through 10: work established pattern all sts knit new sts.

Row 3: *SM, p2, M1P, work to 2 sts before M, M1P, p2*.

Row 5: *SM, p3, M1P, work to 3 sts before M, M1P, p3*.

Row 7: *SM, p4, M1P, work to 4 sts before M, M1P, p4*.

Row 9: *SM, p5, M1P, work to 5 sts before M, M1P, p5*.

Repeat these 10 rows until you have your st count needed for each section.

CUSTOM FIT NOTES

The size of your sweater depends on how long you repeat the Increase Rows. (Change to larger circulars if needed.) Try your sweater on to see how long your increases need to be. Place your stitches on a piece or waste yarn long enough to give you plenty of ease. Put the sweater on and check. You can modify and check to see if you need more or less sts, more or less rows before the underarm join. You will be casting on extra sts at your body join and sleeve area, so account for this. The sleeves join several inches below your arm pit.

If you have the sts you need but want it longer, stop the increases and make it longer.

Some sizes will obtain st count on different rows for different sections.

The sleeves join several inches below your arm pit. It is a jacket, you want to make sure it is roomy.

Here are your st guides before your join:

Front (each side): 51 sts = 36", 55 sts = 40", 59 sts = 44", 63 sts = 48", 67 sts = 52".

Back: 80 sts = 36", 88 sts = 40", 96 sts = 44", 104 sts = 48", 112 sts = 52".

Sleeves (each): 46 sts = 12", 50 sts = 13", 54 sts = 14", 58 sts = 15", 62 sts = 16".

Separating Sleeves

When you have your desired sts and length *Work to M, CO 4 sts, slip arm sts to waste yarn or work onto a cable holder*, work across your back and repeat process for second sleeve (in between *'s). Your body area is now joined in the round with an extra 4 sts at each side. These sts will be worked in Reverse Stockinette st.

Continue your established pattern through row 10 of SC31 chart - 3 inches before desired length. Model shown is 7 total repeats of SC31 chart. 28 inches from top of collar to bottom edge.

Pattern Note

Inside cables on the back panel chart can stop and be replaced with Reverse Stockinette st when ending the pattern before the bottom edge is worked.

Row 1 (RS): S1, SC31, knit to chart area***, SC31, k1.
Row 2 **(WS): S1, SC31, purl to chart area, SC31, p1.

***If you have extra sts in between your charts, decrease evenly by k2tog the extra sts.
RS: S1, SC31, *CSE20*, SC31, k1.
WS: S1, SC31, *CSE20*, SC31, p1.

Work 20 rows of SCE20 chart and last 20 rows of SC31 charts.
Knit 1 row.
Purl 1 row.
BO all sts knitwise.

SLEEVES

Place your sleeves on DPN's or 2 circular needles. Pick up and purl 4 sts where your body CO sts are and work your established pattern in the round.

Work all sts in the round to your elbow. (Try your jacket on.)

Decreases

With your added sts as the 1st 2 sts and last 2 sts of your row work the following decreases:
Row 1: P1, p2tog, purl to SL6, SL6, purl to last 3 sts, p2tog, p1.
Row 2: Purl to SL6, SL6, purl to end.

Continue these 2 rounds until you have the number of sts for your cuff - see below - and/or you are three inches before desired length. End with a non increase row if you still need decreases. (Try your jacket on.)

Knit 2 rounds.
40 sts = 2 SCE20 charts = 9 inches. Every 2 sts on each side will add 1 inch.
Work 20 rows of SCE20 chart.
Knit 2 rows.
BO all sts knitwise.

FINISHING

I-cord at Neck, Bottom and Cuffs

I-cord is worked at Neck, Bottom and each Cuff area where the 2 knit rows create a valley for the I-cord. For the Neck and Bottom areas the I-cord is attached on the inside area after the Side Chart and stops being attached when you reach the start of the chart on the other side. For the cuffs, start attaching the I-cord at the outside edge and work around to meet.

CO 4 sts on DPN. Work I-cord for 3 inches then work I-cord and attach to jacket area as follows:
With RS facing you and the top of the jacket positioned at the top: *K3, sl1, pick up jacket st with RH needle sl the two sts to LH needle and k2tog. Slide sts to right side and knit to end.* (sts are picked up every other st in the top of the knit area.) When you reach the end, work I-cord for 3 inches and BO all sts. Pick up 4 sts next to I-cord. Work I-cord 3 inches. BO all sts. Tie the two 3 inch ends in a knot.

For Cuffs: tie two ends into a knot.
For Neck and Bottom areas: at the point of the I-cord attached to the jacket, co 1 st, pick up 1 st of I-cord upper area, co, 1 st, pick up another I-cord st. (4 sts) Work I-cord for 3 inches. BO. Tie the two 3 inch ends in a knot.

With tapestry needle weave in all loose ends. Soak knitwear in cold water.
Squeeze out water, lay flat and roll in towel to release more water. Block to size.

After dry sew buttons on. Sew hook and eye closures to hold left wearing edge at neck, button areas and in-between buttons - or as needed.

Option: Work button hole embroidery stitch to stabilize and/or make the button hole smaller to fit your button snugly.