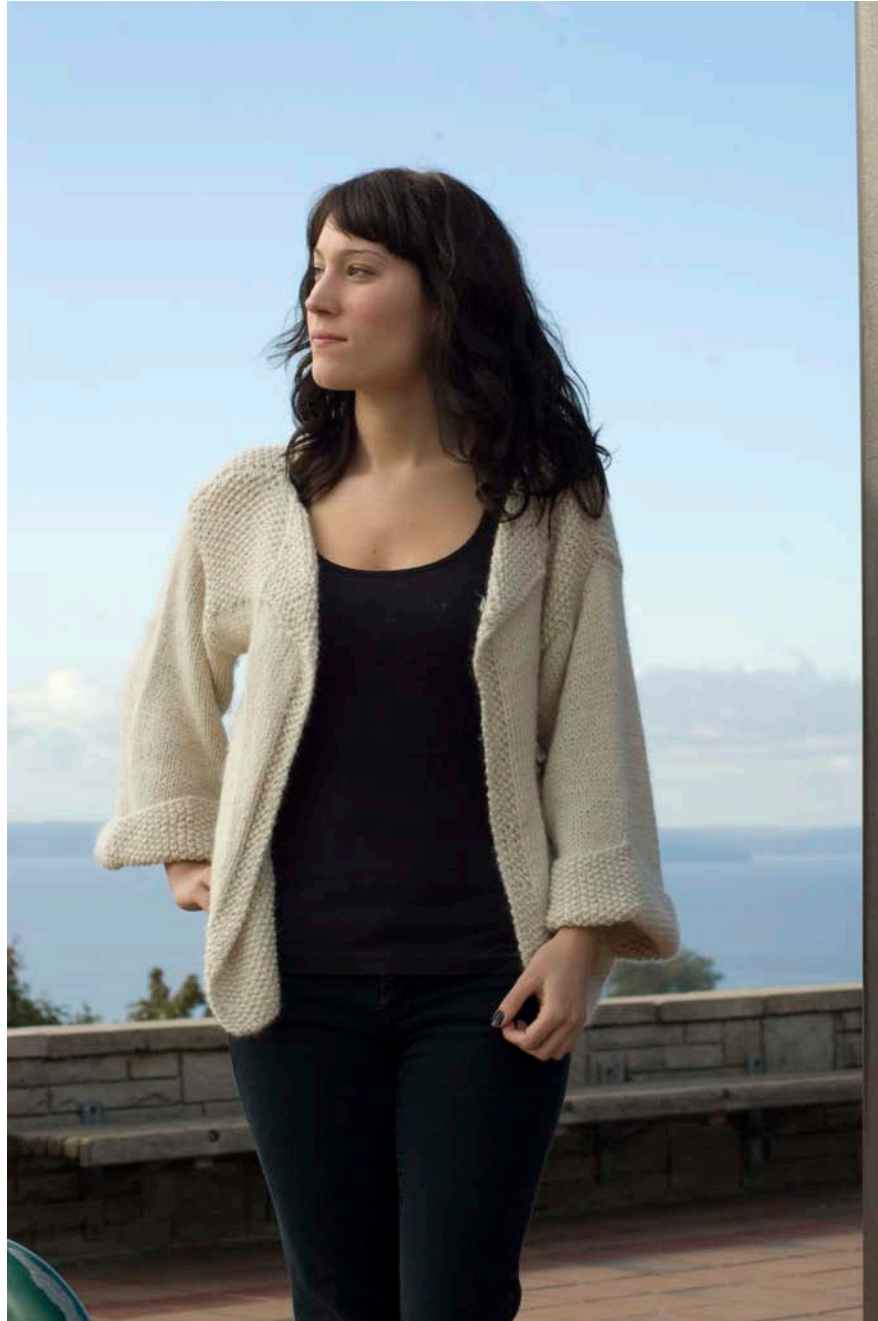


# **BABY ALPACA CROPPED JACKET**

Made with Cascade Baby Alpaca Yarn



# BABY ALPACA CROPPED JACKET

**Designed by Yvette Silverman**

Knitted Measurements Bust 34-36 ( 38-40, 42-44) in.

Length 21 ( 22, 23 ) in.

Materials 7 (8, 9) 100 gr. 3.5 oz balls ( each approx. 108 ) yards of Cascade Yarns Baby Alpaca Chunky, 100% Baby Alpaca , one pair size 10 needle, or size to obtain gauge

Note when one set of instructions is indicated it pertains to all sizes

Seed St. Row 1 K1, P1, repeat across row  
Row 2 P1, K1 repeat across row

Gauge 15 sts & 26 rows = 4 in in seed st  
15 sts & 18 rows = 4 in in stock st.

Back Cast on 68 ( 72, 76) sts. Work in seed st patt for 5 in. Then change to stock st for 11 ( 12, 13 ) in above seed st patt. Change back to seed st patt for 5 in. Bind off.

Right front Cast on 34 (38, 42 ) sts. Work in seed st patt for 5 in. RS facing, work 5sts in seed st patt & the remaining sts in stock st. Keeping 5 sts in seed st patt for front edge border, work as for back.

Left front Work as for right front reversing all shaping.

Sleeve Cast on 60 ( 66, 72) sts. Work in seed st patt for 4 in. for turned up cuff. Change to stock st till piece measures 12 ( 13, 14 ) in above cuff or desired sleeve length. Bind off.

Finishing Block pieces for measurement. Sew shoulder seams from front to back starting at sleeve edge measuring 5 ½ ( 5, 4 ½) in. in from side seam. Then fold down front flap to form a triangle & tack down in place . Set in sleeves & sew side seams & sleeve seams. Turn up cuff & tack down in place.