



DK140

CASCADE ULTRA PIMA YEAR ROUND LITTLE CARDIGAN



DESIGNED BY MELISSA LEAPMAN

Year Round Little Cardigan
Designed by Melissa Leapman
For Cascade Yarn

Sizes

Small (Medium, Large, 1X). Instructions are for smallest size, with changes for other sizes noted in parentheses as necessary.

Finished Measurements

Finished Bust Measurement (Buttoned): 36 ½ (45 ½, 48 ½, 57)"
Finished Length: 22"

Materials

Cascade Yarn's *Ultra Pima*, 5 (6, 7, 8) hanks of #3704
One pair each of sizes 4 and 5 knitting needles or size needed to obtain gauge
One 7/8" button (JHB International's *Bijan Style #30240* was used on sample garment)

Gauge

In Main Patt with larger needles, 22 sts and 32 rows = 4". **To save time, take time to check gauge.**

Border Pattern (*mult 16 + 1 sts*)

See chart.

Main Pattern (*mult 16 + 1 sts*)

See chart.

Garter Stitch Pattern

Row 1 (RS): Knit across.

Patt Row: As Row 1.

Back

With smaller needles, CO 97 (113, 129, 145) sts.

Beg Border Patt, and cont even until piece measures approx 1 ½" from beg, ending after WS row.

Change to larger needles, beg Main St Patt, and work even until piece measures approx 12" from beg, ending after WS row.

Shape Armholes

BO 8 (16, 16, 24) sts at beg of next two rows—81 (81, 97, 97) sts rem.

Cont even until piece measures approx 21" from beg, ending after WS row.

Shape Shoulders

BO 6 (6, 8, 8) sts at beg of next eight rows.

BO rem 33 sts for back of neck.

Left Front

With smaller needles, CO 49 (65, 65, 81) sts.

Beg Border Patt, and cont even until piece measures approx 1 ½" from beg, ending after WS row.

Change to larger needles, beg Main St Patt, and work even until piece measures approx 12" from beg, ending after WS row.

Shape Armhole

BO 8 (16, 16, 24) sts at beg of next row—41 (49, 49, 57) sts rem.

Cont even until piece measures approx 19" from beg, ending after RS row.

Shape Neck

BO 8 sts at beg of next row, BO 4 sts at neck edge once (twice, once, twice), BO off 2 sts at neck edge 2 (4, 2, 4) times, then dec 1 st at neck edge once—24 (24, 32, 32) sts rem.

Cont even in patt as established until piece measures same as back to shoulders, ending after WS row.

Shape Shoulders

BO 6 (6, 8, 8) sts at armhole edge four times.

BO.

Right Front

Same as left front *except* reverse all shaping.

Sleeves

With smaller needles, CO 97 sts.

Beg Border Patt, and cont even until piece measures approx 1 ½" from beg, ending after WS row.

Change to larger needles, beg Main Patt, and work even until piece measures approx 10 (10, 9, 9)" from beg, ending after WS row.

BO.

Finishing

Sew shoulder seams.

Buttonband

With RS facing and smaller needles, pick up and knit 97 sts along left front.

Beg Garter St Patt, and work even until band measures approx 1" from beg.

BO.

Place marker for one button approx ¼" down from beg of front neck shaping.

Buttonhole Band

Same as buttonband along right front until band measures approx ½" from beg.

Next Row: Make buttonhole opposite markers by binding off 3 sts.

Next Row: CO 3 sts over the bound-off sts of previous row.

Cont even until band measures approx 1" from beg.

BO.

Collar

With WS facing and smaller needles, pick up and knit 113 sts evenly along neck edge, beg and end approx ½" from front edges.

Beg Border Patt, and work even until collar measure approx 2 ½" from beg.

Change to larger needles and cont even until collar measures approx 5" from beg.

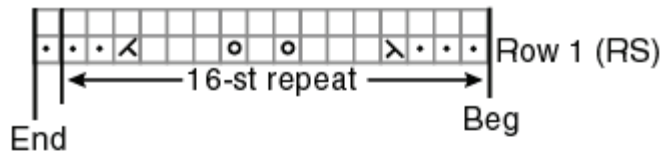
BO on RS row.

Set in sleeves.

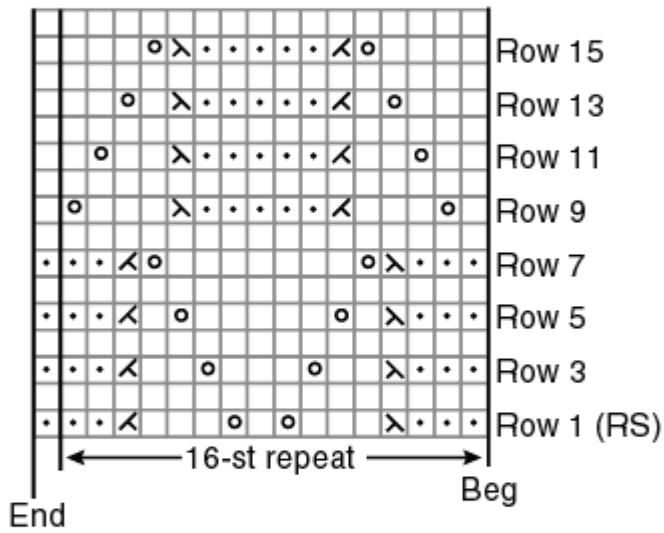
Sew side and sleeve seams.

Sew on button.

Border Pattern



Main Pattern



KEY \square = K on RS; P on WS

\cdot = P on RS; K on WS

\sphericalangle = K2tog

\sphericalangle = SSK

\circ = Yarn over

