



DK198

## Cascade Ultra Pima Floral Lace Jacket



Designed By Nicky Epstein

# Ultra Pima Lace Floral Block Jacket

By Nicky Epstein

Size: one size (for larger size go up one needle size)

Materials: 5 balls of Ultra Pima / 100% Pima Cotton, 3 1/2 oz per 100 g. 220 yards / 200m # 3720

Size 6 needles

One Nicky Epstein Petite Leaf clasp @#04047 at your local yarn store or nickyepstein.com

Gauge: 20 sts and 28 rows = 4" on size 6 needle in St. st

*Editor's Note: According to the gauge of 28 rows = 4", each square is going to be about 11 1/2" (11.43" actual-ly) There are 4 squares around the circumference so that will be about 45 3/4" without the front trim.*

*The length would be 2 squares, or about 23" without bottom trim.*

*The sleeves would also be 23" measured from the neck edge (not shoulder) and the same for the circumference of the sleeve.*

Rib:

Row 1: \*k3, p3; rep from \*, end k3

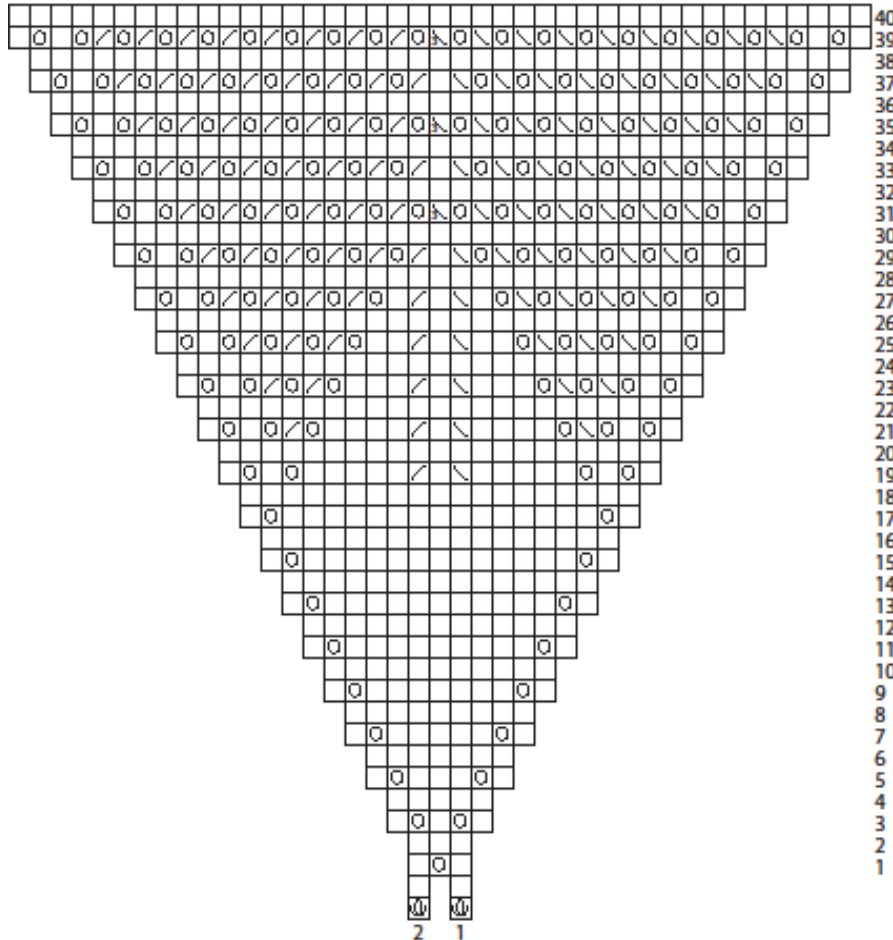
Row 2: \*p3, k3; rep from \*, end p3

Repeat 2 rows for rib

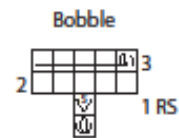
Jacket /Blocks: (make 12)

See Floral Fantasy Block pattern

CH01\_SW31\_FLORAL FANTASY



1/4 of Square



### Stitch Key

CO 1 st

Knit

Yo

SSK

K2tog

SK2P

((K1, p1) twice, k1) in 1 st

Pass 2nd, 3rd, 4th and 5th st over, k tbl

Finishing: see diagram

Sew 4 blocks tog for back, 2 blocks for left front and then 2 blocks for right front. Sew top shoulder seams across blocks.

*Note: There is no back neck space, all block corners touch.*

Sew 2 blocks tog for a sleeve. At one edge, RS facing, pick up 105 sts and work rib pattern for  $\frac{3}{4}$ ". Bind off. Rep for remaining sleeve.

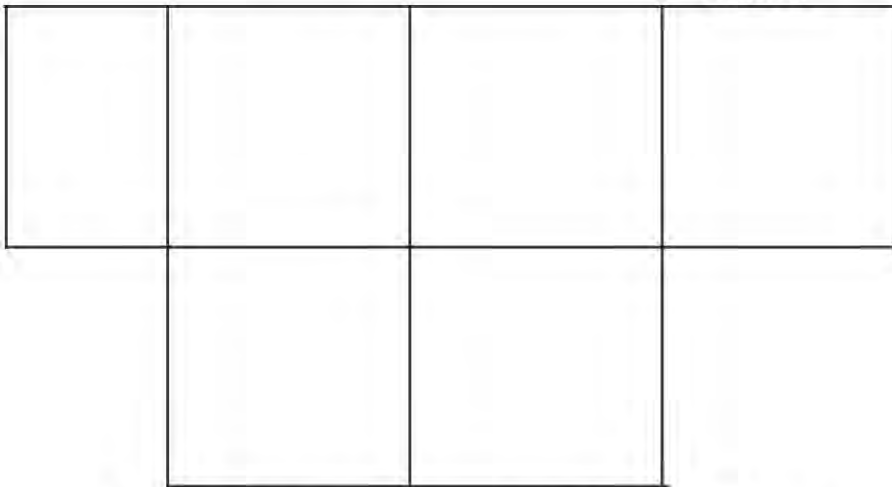
Sew in sleeves, sew side and sleeve seams.

Bottom edge rib:

With RS facing, at left bottom edge (fronts and back) pick up 219 sts. Work rib for  $\frac{3}{4}$ ". Bind off.

**Diagram**

**Sleeve**



**Back & Fronts**

**Leave Open for Front**



Front band and collar:

With RS facing, at lower right front edge pic up 225 sts. Place marker at 69th stitch (approx. 1  $\frac{1}{4}$  blocks up), continue around with 87 sts, place marker to correspond to other front, continue for another 69 sts. Work rib for  $\frac{3}{4}$ ".

Next row, at right front edge RS facing bind off 69 sts, work in pattern across next 87 sts, bind off remaining 69 sts. Attach new yarn and cont rib until collar measures 4". Bind off. Sew clasp to front.

## Floral Fantasy

### Special Stitch

**Make Bobble (MB)** Cast on 1 st. Leave Tail for tying, (K1, p1, k1, p1, k1) all in the same st, turn, p5, turn, pass the 2nd, 3rd, 4th and 5th stitches, one at a time, over the first st, then k this st tbl. Fasten off.

### Block

Note Stitch count is given for each needle. Cast on 8 stitches (2 stitches each on 4 double-pointed needles). K 1 rnd.

**Rnd 1** \*K1, yo, k1; repeat from \* to end (3 stitches).

**Rnd 2 and all even-numbered rnds** Knit.

**Rnd 3** \*[K1, yo] twice, k1; repeat from \* to end (5 stitches).

**Rnd 5** \*K1, yo, k3, yo, k1; repeat from \* to end (7 stitches).

**Rnd 7** \*K1, yo, k5, yo, k1; repeat from \* to end (9 stitches).

**Rnd 9** \*K1, yo, k7, yo, k1; repeat from \* to end (11 stitches).

**Rnd 11** \*K1, yo, k9, yo, k1; repeat from \* to end (13 stitches).

**Rnd 13** \*K1, yo, k11, yo, k1; repeat from \* to end (15 stitches).

**Rnd 15** \*K1, yo, k13, yo, k1; repeat from \* to end (17 stitches).

**Rnd 17** \*K1, yo, k15, yo, k1; repeat from \* to end (19 stitches).

**Rnd 19** \*[K1, yo] twice, k5, ssk, k1, k2tog, k5, [yo, k1] twice; repeat from \* to end (21 stitches).

**Rnd 21** \*[K1, yo] twice, ssk, yo, k4, ssk, k1, k2tog, k4, yo, k2tog, [yo, k1] twice; repeat from \* to end (23 stitches).

**Rnd 23** \*[K1, yo] twice, [ssk, yo] twice, k3, ssk, k1, k2tog, k3, [yo, k2tog] twice, [yo, k1] twice; repeat from \* to end (25 stitches).

**Rnd 25** \*[K1, yo] twice, [ssk, yo] 3 times, k2, ssk, k1, k2tog, k2, [yo, k2tog] 3 times, [yo, k1] twice; repeat from \* to end (27 stitches).

**Rnd 27** \*[K1, yo] twice, [ssk, yo] 4 times, k1, ssk, k1, k2tog, k1, [yo, k2tog] 4 times, [yo, k1] twice; repeat from \* to end (29 stitches).

**Rnd 29** \*[K1, yo] twice, [ssk, yo] 5 times, ssk, k1, k2tog, [yo, k2tog] 5 times, [yo, k1] twice; repeat from \* to end (31 stitches).

**Row 31** \*[K1, yo] twice, [ssk, yo] 6 times, sk2p, [yo, k2tog] 6 times, [yo, k1] twice; repeat from \* to end (33 stitches).

**Rnd 33** \*[K1, yo] twice, [ssk, yo] 6 times, ssk, k1, k2tog, [yo, k2tog] 6 times, [yo, k1] twice; repeat from \* to end (35 stitches).

**Rnd 35** \*[K1, yo] twice, [ssk, yo] 7 times, sk2p, [yo, k2tog] 7 times, [yo, k1] twice; repeat from \* to end (37 stitches).

**Rnd 37** \*[K1, yo] twice, [ssk, yo] 7 times, ssk, k1, k2tog, [yo, k2tog] 7 times, [yo, k1] twice; repeat from \* to end (39 stitches).

**Rnd 39** \*[K1, yo] twice, [ssk, yo] 8 times, sk2p, [yo, k2tog] 8 times, [yo, k1] twice; repeat from \* to end (41 stitches).

**Rnd 40** Knit.

Bind off.

### Finishing

Make 5 bobbles and sew them to the center of each block, on fronts and sleeves only.