



DK255

Cascade 220 Sport  
Women's Retro Fair Isle Cardigan



Designed By Melissa Leapman

# 220 Sport Woman's Retro Fair Isle Cardigan

## Designed by Melissa Leapman

### Sizes

Small (Medium, Large, 1X, 2X). Instructions are for smallest size, with changes for other sizes noted in parentheses as necessary.

### Finished Measurements

Bust (Buttoned): 36 ½ (39, 45, 47, 54)"

Length: 24 ¼ (25 ½, 26 ½, 26 ½, 27 ¼)"

### Materials

- Cascade Yarn's *220 Sport*, 3 (4, 4, 4, 5) hanks of #9408 (A), 1 hank *each* of #8013 (B), #8012 (C), and #8021 (D), 2 (3, 3, 3, 4) hanks of #8010 (E), 1 hank *each* of #7808 (F), #7818 (G), #8891 (H), #7827 (I), #7825 (J), and #7824 (K)
- One pair each of sizes 3 and 5 knitting needles or size needed to obtain gauge
- 8 Buttons, ¾"
- 2 Stitch holders

### Gauge

In Stockinette St Patt in Retro Fair Isle Patt with larger needles, 22 sts and 22 rows = 4". **To save time, take time to check gauge.**

### K1 P1 Rib Patt (*over mult. 2 sts*)

**Row 1 (RS):** \*K1, P1. Repeat from \* across.

**Patt Row:** As Row 1.

### Stockinette St Patt (*over any number of sts*)

**Row 1 (RS):** Knit across.

**Row 2:** Purl across.

Repeat Rows 1 and 2 for patt.

### Retro Fair Isle Patt

See chart.

### Back

With smaller needles and A, CO 96 (108, 120, 132, 144) sts.

Beg K1 P1 Rib Patt, and work even until piece measures approx 1 ½" from beg, ending after WS row, inc 1 st at beg of last row—97 (109, 121, 133, 145) sts.

Change to larger needles, beg Retro Fair Isle Patt in Stockinette St, and work even until piece measures approx 15 ¼ (16, 16 ½, 16 ½, 16 ¾)" from beg, ending after WS row. Make a note of which row of the pattern you end with.

**Shape Armholes**

BO 4 (5, 6, 7, 8) sts at beg of next two rows, BO 2 (3, 4, 4, 6) sts at beg of next two rows, then dec 1 st each side every row 2 (8, 12, 18, 20) times, then every other row 5 (3, 2, 0, 0) times—71 (71, 73, 75, 77) sts rem.

Cont even until piece measures approx 22  $\frac{3}{4}$  (24, 25, 25, 25  $\frac{3}{4}$ )" from beg, ending after WS row.

**Shape Neck**

Work across first 17 (17, 18, 19, 20) sts, join second ball of yarn and BO middle 37sts, work across to end row.

Work both sides at once with separate balls of yarn and dec 1 st each neck edge once—16 (16, 17, 18, 19) sts rem each side.

Cont even until piece measures approx 23  $\frac{1}{4}$  (24  $\frac{1}{2}$ , 25  $\frac{1}{2}$ , 25  $\frac{1}{2}$ , 26  $\frac{1}{4}$ )" from beg, ending after WS row.

**Shape Shoulders**

BO 5 (5, 6, 6, 6) sts at beg of next four rows, then BO 6 (6, 5, 6, 7) sts at beg of next two rows.

**Pocket Linings (make 2)**

With larger needles and A, CO 31 sts.

Beg Stockinette St and work even until lining measures approx 4" from beg, ending after WS row.

Slip sts onto holder.

**Left Front**

With smaller needles and A, CO 48 (48, 60, 60, 72) sts.

Beg K1 P1 Rib Patt, and work even until piece measures approx 1  $\frac{1}{2}$ " from beg, ending after WS row, inc 1 st at beg of last row—49 (49, 61, 61, 73) sts.

Change to larger needles, beg Retro Fair Isle Patt in Stockinette St, and work even until piece measures approx 5 (5  $\frac{1}{2}$ , 6  $\frac{1}{2}$ , 6  $\frac{1}{2}$ , 7  $\frac{1}{4}$ )" from beg, ending after WS row.

**Place Pocket**

Work across first 9 (9, 15, 15, 21) sts, with RS facing cont patt as established across 31 sts of one pocket lining, place next 31 sts of left front onto stitch holder, work to end row.

Cont even in patt as established until piece measures same as back to underarm, ending after the same row of the pattern as the back before the armholes.

**Shape Armhole**

BO 4 (5, 6, 7, 8) sts at armhole edge once, BO 2 (3, 4, 4, 6) sts at armhole edge once, then dec 1 st at armhole edge every row 2 (8, 12, 18, 20) times, then every other row 5 (3, 2, 0, 0) times—36 (30, 37, 32, 39) sts rem.

Cont even until piece measures approx 21  $\frac{1}{4}$  (22  $\frac{1}{2}$ , 23  $\frac{1}{2}$ , 23  $\frac{1}{2}$ , 24  $\frac{1}{4}$ )" from beg, ending after RS row.

**Shape Neck**

BO 10 (7, 10, 7, 10) sts at neck edge once, BO 5 (2, 5, 2, 5) sts at neck edge once, then dec 1 st at neck edge every row five times—16 (16, 17, 18, 19) sts rem.

Cont even until piece measures same as back to shoulders, ending after WS row.

**Shape Shoulder**

BO 5 (5, 6, 6, 6) sts at shoulder edge twice.

Work one row even.

BO rem 6 (6, 5, 6, 7) sts.

**Right Front**

Same as left front except reverse all shaping.

**Sleeves**

With smaller needles and A, CO 60 (60, 66, 66, 66) sts.

Beg K1 P1 Rib Patt, and work even until piece measures approx 1  $\frac{1}{2}$ " from beg, ending after WS row, inc 1 st at beg of last row—61 (61, 67, 67, 67) sts.

Change to larger needles, beg Retro Fair Isle Patt in Stockinette St, and inc 1 st each side every other row 0 (0, 0, 5, 7) times, every fourth row 0 (7, 6, 5, 5) times, then every sixth row 4 (0, 1, 0, 0) times—69 (75, 81, 87, 91) sts.

Cont even until piece measures approx 7 (7  $\frac{1}{2}$ , 8, 8, 8  $\frac{1}{2}$ )" from beg, ending after same row of patt as back and fronts to armholes.

**Shape Cap**

BO 4 (5, 6, 7, 8) sts at beg of next two rows, then dec 1 st each side every other row 9 (10, 11, 9, 10) times, then every row 8 (9, 10, 14, 14) times—27 sts rem.

BO 3 sts at beg of next four rows—15 sts rem.

BO.

**Finishing**

Sew shoulder seams.

**Neckband**

With RS facing, smaller needles, and A, pick up and knit 106 sts along neckline.

Beg K1 P1 Rib Patt, and work even until neckband measures approx 1" from beg.

BO in patt.

**Buttonband**

With RS facing, smaller needles, and A, pick up and knit 124 (128, 132, 132, 134) sts along left front edge.

Beg K1 P1 Rib Patt, and work even until neckband measures approx 1" from beg.

BO in patt.

Place markers for 8 evenly spaced buttons.

**Buttonhole Band**

With RS facing, smaller needles, and A, pick up and knit 124 (128, 132, 132, 134) sts along left front edge.

Beg K1 P1 Rib Patt, and work even until neckband measures approx ½" from beg.

**Next Row:** Cont patt, making buttonholes opposite markers by binding off 2 sts.

**Next Row:** Cont patt, CO 2 sts over the bound off sts of previous row.

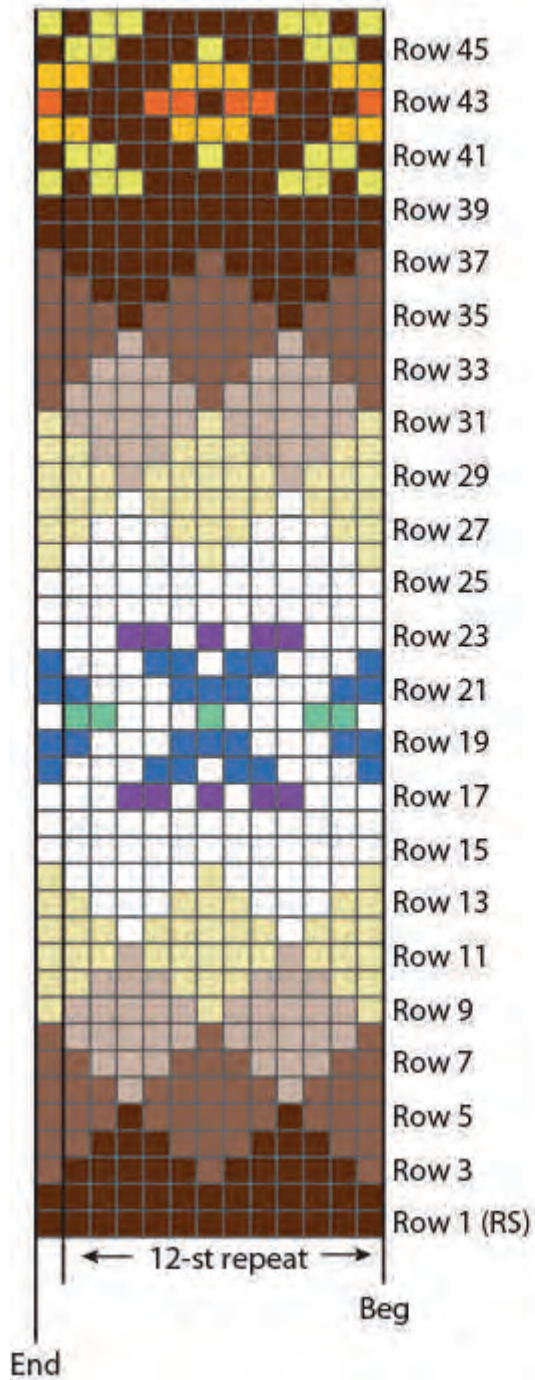
Complete same as buttonband.

**Pocket Edgings**

With RS facing, smaller needles, and A, pick up and K 31 sts from pocket holder. Work K1 P1 Rib for 1". BO. Sew linings to WS of fronts. Sew sides of pocket edgings to RS of front.

Set in sleeves. Sew sleeve and side seams.

### Retro Fair Isle Pattern



Color Key

- = A
- = B
- = C
- = D
- = E
- = F
- = G
- = H
- = I
- = J
- = K

Stitch Key □ = K on RS; P on WS

