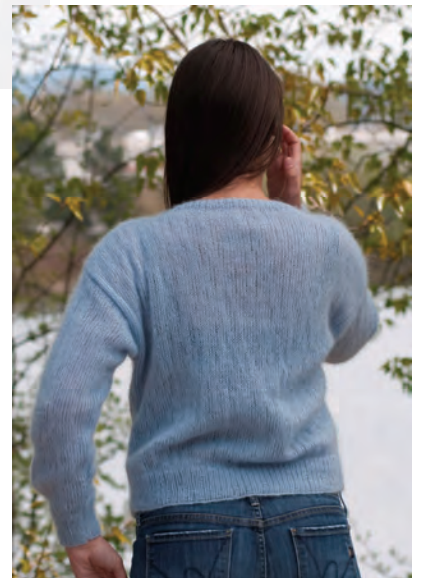




FW155

Kid Seta Mohair Jacket



Designed By Marilyn Peters

Kid Seta Mohair Jacket

Designed by Marilyn Peters

To fit sizes: Bust: 32" (34", 36", 38", 40", 42") Length: 21" (21", 21", 22", 22", 22") Sleeve length: 18" (18", 18", 19", 19", 19") Gauge: 6 sts x 7 rows = 1" using 5mm (US8) needles <i>Please check your gauge before beginning this garment.</i>	Materials: 6 (6, 8, 8, 8, 8) x 25g Kid Seta (61% super kid mohair/ 35% silk/ 4% wool) by Cascade Yarns #22 1 pair each 4mm (US6) and 5mm (US8) needles 2 stitch holders Skill level: Easy
--	---

This jacket is made by knitting 2 strands of yarn together.

Right Front

Using 4mm (US6) needles and 2 strands of yarn cast on 62 (66, 70, 74, 78, 82) sts and work in rib for 20 rows, incr. 1 st at beg. of last row – 63 (67, 71, 75, 79, 83) sts
Change to 5mm (US8) needles and work in stst until front measures 13" (13", 12", 13", 13", 13") finishing on a wrong side row.
Next row: K26 (28, 31, 33, 35, 37) and leave on stitch holder, k to end of row – 37 (39, 40, 42, 44, 46) sts.
Dec. 1 st at neck edge on next and every row to 27 (29, 30, 32, 34, 36) sts.
Work without shaping until front measures 21" (21", 21", 22", 22", 22") or desired length. BO.

Left Front

Using 4mm (US6) needles and 2 strands of yarn cast on 26 (28, 29, 31, 33, 35) sts and work in rib for 20 rows, inc. 1 st at end of last row – 27 (29, 30, 32, 34, 36) sts.
Change to 5mm (US8) needles and work in stst until front measures 21" (21", 21", 22", 22", 22") or desired length. BO.

Back

Using 4mm (US6) needles and 2 strands of yarn cast on 93 (99, 105, 111, 117, 123) sts and work in rib for 20 rows, incr. 1 st at each end of last row – 95 (101, 107, 113, 119, 125) sts.
Change to 5mm (US8) needles and work in stst until back measures 21" (21", 21", 22", 22", 22") or desired length, finishing on a wrong side row.
BO26 (28, 30, 32, 34, 36), k43 (45, 47, 49, 51, 53) and leave on holder, BO26 (28, 30, 32, 34, 36).

Sleeves (make 2 the same)

Using 4mm (US6) needles cast on 42 (44, 46, 46, 48, 48) sts.
Work in rib for 20 rows, incr. 6 (6, 6, 8, 8, 8) sts evenly across last row – 48 (50, 52, 54, 56, 56) sts.
Change to 5mm (US8) needles and work in stst, incr. 1 st at each end of 5th and every foll. 6th row to 76 (78, 80, 82, 84, 84) sts, then every alt. (knit) row to 96 (98, 100, 102, 104, 104) sts.
Work without shaping until sleeve measures 18" (18", 18", 19", 19", 19") or desired length. BO loosely.

Right Front Band

With right side facing, using 4mm (US6) needles pick up 66 (66, 66, 72, 72, 72) sts for right front band.

Work in rib for 3 rows.

Row 4: (*buttonhole row*) Rib 3, yon, k2tog, *rib 12 (12, 12, 13, 13, 13), yrn, k2tog, rep. from * to last 5 sts, rib 5.

Work in rib for 2 more rows. BO loosely.

Neck and Left Front Band

With right side facing, using 4mm (US6) needles pick up 7 sts across top of ribbing, K26 (28, 31, 33, 35, 37) sts from holder, pick up 54 (54, 58, 58, 58, 58) sts for right neck band, k43 (45, 47, 49, 51, 53) sts from holder, pick up 136 (136, 140, 140, 140, 140) sts for left neck and front band – 266 (270, 283, 287, 291, 295) sts. Work in rib for 3 rows.

Row 4: (*Buttonhole row*) Rib 3, yon, k2tog, rib to end of row.

Work in rib for 2 more rows. BO loosely.