



W215

Cascade Sierra
Cables and Lace Cardigan



Cables and Lace Cardigan

Designed by Melissa Leapman for Cascade Yarns

Skill Level

Intermediate

Sizes

Small (Medium, Large, 1X). Instructions are for smallest size, with changes for other sizes noted in parentheses as necessary.

Finished Measurements

Bust (buttoned): 36 (44, 52, 60)"

Total length: 24 (24 ½, 24 ½, 25)"

Materials

- ◆ Cascade Yarn's *Sierra*, 10 (10, 11, 12) hanks
- ◆ One pair *each* of sizes 4, 5, and 6 knitting needles or size needed to obtain gauge
- ◆ Seven 1" buttons (JHB International's *Style #16044* was used on sample garment)

Gauge

In Cables and Lace Patt with larger needles, 28 sts and 28 rows = 4". **To save time, take time to check gauge.**

Stitch Patterns

K1 P1 Rib Pattern (*mult 2 sts*)

Row 1 (RS): *K1, P1. Repeat from * across.

Patt Row: As Row 1.

Repeat Patt Row for patt.

Cables and Lace Pattern (*mult 14 + 8 sts*)

See chart.

Back

With smallest needles, CO 120 (148, 176, 204) sts.

Beg K1 P1 Rib Patt, and work even until piece measures approx 1" from beg, ending after WS row.

Change to largest needles, beg Cables and Lace Patt, and work even until piece measures approx 14 ½" from beg, ending after WS row.

Shape Armholes

BO 14 (28, 28, 42) sts at beg of next two rows—92 (92, 120, 120) sts rem.

Cont even in patt until piece measures approx 23 (23 ½, 23 ½, 24)" from beg, ending after WS row.

Shape Shoulders

BO 6 (6, 6, 9, 9) sts at beg of next six rows, then BO 5 (5, 10, 10) sts at beg of next two rows—46 sts rem.

BO.

Left Front

With smallest needles, CO 64 (78, 92, 106) sts.

Beg K1 P1 Rib Patt, and work even until piece measures approx 1" from beg, ending after WS row.

Change to largest needles, beg Cables and Lace Patt, and work even until piece measures approx 14 ½" from beg, ending after WS row.

Shape Armhole

BO 14 (28, 28, 42) sts at beg of next rows—50 (50, 64, 64) sts rem.

Cont even until piece measures approx 21 (21 ½, 21 ½, 22)" from beg, ending after WS row.

Shape Neck

BO 11 sts at neck edge once, BO 7 sts at neck edge once, BO 3 (3, 4, 4) sts at neck edge once, then dec 1 st at neck edge every row 4 (4, 5, 5) times—23 (23, 37, 37) sts rem.

Cont even in patt until piece measures approx 23 (23 ½, 23 ½, 24)" from beg, ending after WS row.

Shape Shoulder

BO 6 (6, 9, 9) sts at shoulder edge three times—5 (5, 10, 10) sts rem.

Work one row even.

BO.

Right Front

Same as left front *except* reverse all shaping.

Sleeves

With smallest needles, CO 64 sts.

Beg K1 P1 Rib Patt, and work even until piece measures approx 1" from beg, ending after WS row.

Change to largest needles, beg Cables and Lace Patt, and inc 1 st each side every other row 0 (3, 8, 23) times, every fourth row 18 (28, 23, 12) times, then every sixth row 10 (0, 0, 0) times, working new sts into patt as they accumulate—120 (126, 126, 134) sts.

Cont even until sleeve measures approx 22 (22, 20 ½, 20 ½)" from beg, ending after WS row.

BO.

Finishing

Block pieces to measurements.

Sew shoulder seams.

Buttonband

With RS facing and smallest needles, pick up and knit 140 (144, 144, 148) sts along left front edge.

Beg K1 P1 Rib Patt, and work even until band measures approx 1" from beg.

BO.

Place markers for seven buttons along band, making the first and last ¼" from first neck bind-off and lower edge, respectively, and the others evenly-spaced in between them.

Buttonhole Band

With RS facing and smallest needles, pick up and knit 140 (144, 144, 148) sts along right front edge, including side of neckband.

Beg K1 P1 Rib Patt until band measures approx ½" from beg.

Next Row: Work buttonholes opposite markers by binding off 4 sts.

Next Row: Cont in patt as established, and CO 4 sts above the bound-off sts from previous row.

Complete same as buttonband.

Collar

With WS facing and smallest needles, beg halfway through front bands, and pick up and knit 124 sts along neckline.

Beg K1 P1 Rib Patt, and work even for 2 ¼".

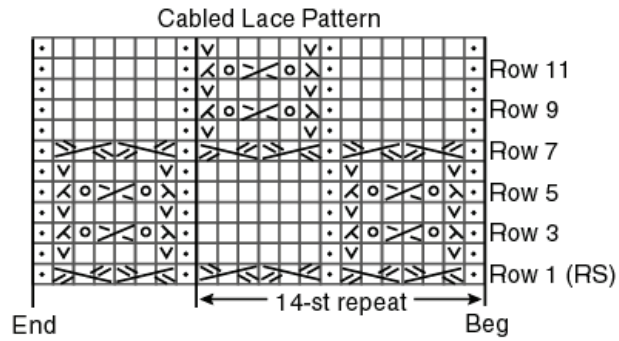
Change to largest sized needles, and cont patt as established until collar measures approx 5" from beg.

BO *loosely* in patt.

Set in sleeves.

Sew sleeve and side seams.

Sew on buttons.



KEY □ = K on RS; P on WS

 • = P on RS; K on WS

 ○ = Yarn over

 ↙ = K2tog

 ↘ = SSK

 ↗ = Right Twist = Slip next st onto cn and hold in back; K1; K1 from cn **OR** K2tog, leaving them on LH needle; insert point of RH needle between these 2 sts and K the first one again

 ∨ = (On WS rows) Slip st purlwise with yarn in front

 ↘↘ = Slip 2 sts onto cn and hold in back; K1; K2 from cn

 ↗↗ = Slip next st onto cn and hold in front; K2; K1 from cn

