



W340

Lana D'Oro  
Contemporary Belted Jacket



Designed By Melissa Leapman

# Lana D'Oro Belted Contemporary Cabled Jacket

## Designed by Melissa Leapman

### Sizes

Small (Medium, Large, 1X). Instructions are for smallest size, with changes for other sizes noted in parentheses as necessary.

### Finished Measurements

Bust (Buttoned): 37 ½ (41, 44, 49)"

Total length: 29 (29 ½, 30, 30 ½)"

### Materials

- Cascade's *Lana D'Oro* , 10 (11, 12, 12) hanks of #1059
- One pair of size 7 knitting needles or size needed to obtain gauge
- Cable needle

### Gauge

In Double Seed St Patt, 19 sts and 28 rows = 4".

In Cable Panel, 46 sts measure 6" wide.

To save time, take time to check gauge.

### Stitch Patterns

**Double Seed St Pattern** (*mult 2 + 1 sts*)

**Row 1 (RS):** \*K1, P1. Repeat from \* across, ending row with K1.

**Row 2:** \*P1, K1. Repeat from \* across, ending row with P1.

**Row 3:** As Row 2.

**Row 4:** As Row 1.

Repeat Rows 1-4 for patt.

**Cable Panel** (*mult 18 + 10 sts*)

See chart.

### Back

CO 125 (133, 141, 153) sts.

### Set Up Patts

Work Row 1 of Double Seed St Patt over first 3 (7, 11, 17) sts, place marker, work Row 1 of Cable Panel over next 46 sts, place marker, work Row 1 of Double Seed St Patt over next 27 sts, place marker, work Row 1 of Cable Panel over next 46 sts, place marker, work Row 1 of Double Seed St Patt over next 3 (7, 11, 17) sts to end the row.

Cont even in patts as established until the piece measures approx 11 (10, 10, 9 ½)" from beg, ending after WS row.

**Increase for Sleeves**

CO 2 sts at beg of next four rows, CO 4 sts at beg of next two rows, CO 6 sts at beg of next two rows, CO 10 sts at beg of next four rows, then inc 1 st each side every row 10 (12, 12, 16) times, working new sts into Double Seed St Patt as they accumulate—213 (217, 217, 225) sts.

Cont even in patts as established until piece measures approx 28 (28 ½, 29, 29 ½)" from beg, ending after WS row.

**Shape Neck**

Work across first 94 (97, 97 100) sts, join second ball of yarn and BO middle 25 sts, work across to end the row.

Work both sides at once with separate balls of yarn and dec 1 st each neck edge once—93 (95, 95, 99) sts rem each side.

Cont even until piece measures approx 29 (29 ½, 30, 30 ½)" from beg, ending after WS row.

**Left Front**

CO 76 (80, 84, 90) sts.

**Set Up Patts**

Work Row 1 of Double Seed St Patt over first 3 (7, 11, 17) sts, place marker, work Row 1 of Cable Panel over next 46 sts, place marker, work Row 1 of Double Seed St Patt over next 27 sts to end the row.

Cont even in patts as established until the piece measures approx 11 (10, 10, 9 ½)" from beg, ending after WS row.

**Increase for Sleeves**

CO 2 sts at armhole edge twice, CO 4 sts at armhole edge once, CO 6 sts at armhole edge once, CO 10 sts at armhole edge twice, then inc 1 st at armhole edge every row 10 (12, 12, 16) times, working new sts into Double Seed St Patt as they accumulate—120 (126, 130, 140) sts.

Cont even in patts as established until piece measures approx 26 (26 ½, 27, 27 ½)" from beg, ending after RS row.

**Shape Neck**

BO 14 sts at neck edge once, BO 8 sts at neck edge once, then dec 1 st at neck edge every row three times, then every other row twice—93 (95, 95, 99) sts rem.

Cont even until piece measures same as back.

**Right Front**

Same as left front, reversing placement of patterns and all shaping.

### Finishing

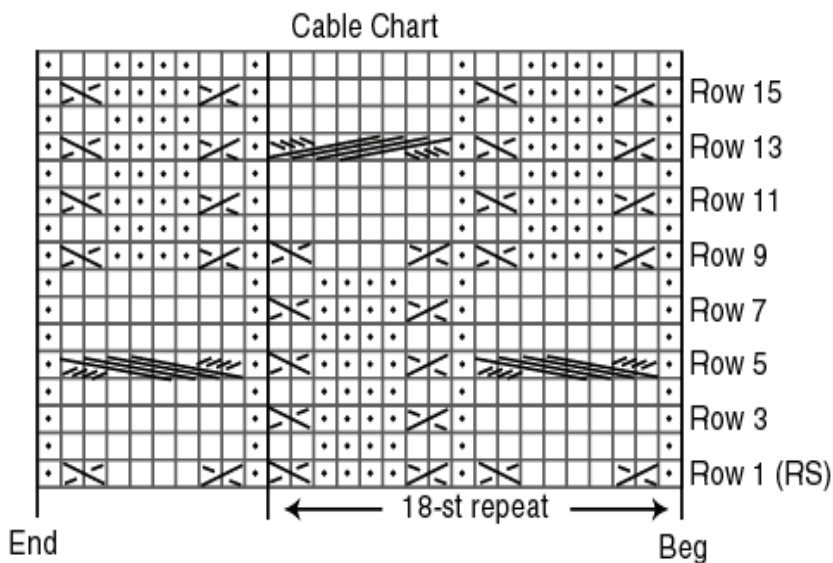
Sew shoulder/sleeve seams.

Sew side seams.

### Sash

CO 325 sts. Beg Double Seed St Patt, and work even until piece measures approx 2 ½" from beg.

BO in patt.



KEY □ = K on RS; P on WS

• = P on RS; K on WS

⋈ = Right Twist = Slip next st onto cn and hold in back; K1; K1 from cn **OR** K2tog, leaving them on LH needle; insert point of RH needle between these 2 sts and K the first one again

⋈ = Left Twist = Slip next st onto cn and hold in front; K1; K1 from cn **OR** skip first st and K next st *in back loop*; then K the skipped st; slip both sts off LH needle together

⋈ = Slip 4 sts onto cn and hold in back; K4; K4 from cn

⋈ = Slip 4 sts onto cn and hold in front; K4; K4 sts from cn

