

CASCADE YARNS

DISTRIBUTOR OF FINE YARN

W385

Eco Cloud

Adrienne



Designed by Melissa Leapman

Eco Cloud Adrienne

Designed by Melissa Leapman

Sizes

Small (Medium, Large, 1X, 2X). Instructions are for smallest size, with changes for other sizes noted in parentheses as necessary.

Finished Measurements

Bust (buttoned): 35 (39, 43, 47, 51)"

Total length: 24 (24 ½, 25, 25, 25 ½)"

Materials

- Cascade's Eco Cloud, 6 (6, 7, 7, 8)hanks of #1808
- Knitting needles, sizes 8 and 10 or sizes needed to obtain gauge
- 6 buttons (JHB International's *Sandblast Style #80535* was used on sample garment)

Gauge

In Stockinette St Patt with larger needles, 16 sts and 24 rows = 4".

Each 20- st cable panel measures 3 ½" across.

To save time, take time to check gauge.

Rib Pattern (*over mult 2 sts*)

Row 1 (RS): *K1, P1; repeat from * across.

Patt Row: As Row 1.

Stockinette Stitch Pattern

Row 1 (RS): Knit across.

Row 2: Purl across.

Repeat Rows 1 and 2 for patt.

Cable Panel (*over 20 sts*)

See chart.

Seed Stitch Pattern (*over mult 2 sts*)

Row 1 (RS): *K1, P1; repeat from * across.

Row 2: *P1, K1; repeat from * across.

Repeat Rows 1 and 2 for patt.

Notes

- .. Instructions include one selvedge stitch each side; these stitches are not reflected in final measurements.
- .. For fully-fashioned decreases, On RS rows, K2, SSK, work across in patt as established until 4 sts rem, ending row with K2tog, K2; on WS rows, P2, P2tog, work across in patt as established until 4 sts rem in row, ending row with SSP, P2.

Back

With smaller needles, CO 84 (92, 100, 108, 116) sts.

Beg Rib Patt, and work even until piece measures approx 1 ½" from beg, ending after WS row.

Set Up Patts

Change to larger needles, and work Row 1 of Stockinette St Patt over first 10 (14, 18, 22, 26) sts, work Row 1 of Cable Panel over next 20 sts, work Row 1 of Stockinette St over middle 24 sts, work Row 1 of Cable Panel over next 20 sts, work Row 1 of Stockinette St across to end row.

Cont even in patts as established until piece measures approx 15" from beg, ending after WS row.

Shape Armholes

BO 4 (5, 6, 7, 8) sts at beg of next two rows, BO 2 (2, 3, 4, 5) sts at beg of next two rows, then work fully-fashioned decreases (see Notes) each side every row 2 (4, 6, 6, 6) times, then every other row 3 (3, 3, 3, 4) times—62 (64, 64, 68, 70) sts rem.

Cont even in patts as established until piece measures approx 23 (23 ½, 24, 24, 24 ½)" from beg, ending after WS row.

Shape Shoulders

BO 6 (6, 6, 7, 7) sts at beg of next four rows, then BO 6 (7, 7, 7, 8) sts at beg of next two rows—26 sts rem.

BO.

Left Front

With smaller needles, CO 46 (50, 54, 58, 62) sts.

Beg Rib Patt, and work even until piece measures approx 1 ½" from beg, ending after WS row.

Set Up Patts

Change to larger needles, and work Row 1 of Stockinette St Patt over first 10 (14, 18, 22, 26) sts, work Row 1 of Cable Panel over next 20 sts, work Row 1 of Stockinette St over next 9 sts, work Row 1 of Seed St Patt across 7 sts to end row.

Cont even in patts as established until piece measures approx 15" from beg, ending after WS row.

Shape Armhole

BO 4 (5, 6, 7, 8) sts at armhole edge once, BO 2 (2, 3, 4, 5) sts at armhole edge once, then work fully-fashioned decreases (see Notes) at armhole edge every row 2 (4, 6, 6, 6) times, then every other row 3 (3, 3, 3, 4) times—35 (36, 36, 38, 39) sts rem.

Cont even in patts as established until piece measures approx 21 (21 ½, 22, 22, 22 ½)" from beg, ending after RS row.

Shape Neck

BO 7 sts at neck edge once, BO 4 sts at neck edge once, BO 3 sts at neck edge once, then dec 1 st at neck edge every row three times—18 (19, 19, 21, 22) sts rem.

Cont even until piece measures same as back to shoulders.

Shape Shoulder

BO 6 (6, 6, 7, 7) sts at shoulder edge twice.

Work one row even.

BO rem 6 (7, 7, 7, 8) sts.

Place markers for 6 buttons, making the first one ½" down from beg of neck shaping, the last 1" from lower edge, and the others evenly-spaced in between.

Right Front

Same as left front *except* reverse all shaping and make buttonholes opposite marker on RS row as follows: Work first 2 sts in patt as established, BO next 3 sts, work across to end row. On subsequent row, CO 3 sts over the bound off sts.

Sleeves

With smaller needles, CO 64 (64, 68, 68, 72) sts.

Beg Rib Patt, and work even until piece measures approx 1 ½" from beg, ending after WS row.

Change to larger needles, beg Stockinette St Patt, and dec 1 st each side every sixth row 4 (0, 0, 0, 0) times, every eighth row 2 (5, 5, 0, 0) times, every twelfth row 0 (0, 0, 1, 1) time, and then every fourteenth row 0 (0, 0, 2, 2) times—52 (54, 58, 62, 66) sts rem.

Cont even until piece measures approx 9" from beg, ending after WS row.

Shape Cap

BO 4 (5, 6, 7, 8) sts at beg of next two rows, then work fully-fashioned decreases (see Notes) each side every fourth row 2 (4, 4, 3, 4) times, then every other row 10 (8, 9, 11, 11) times—20 sts rem.

Work 1 (0, 1, 1, 0) row even.

BO 2 sts at beg of next four rows—12 sts rem.

BO.

Finishing

Sew shoulder seams.

Lightly block pieces.

Collar

With WS facing and smaller needles, beg and end halfway through front Seed St bands, and pick up and knit 54 sts along neckline.

Beg Seed St Patt, and work even until collar measures approx 2 ½" from beg.

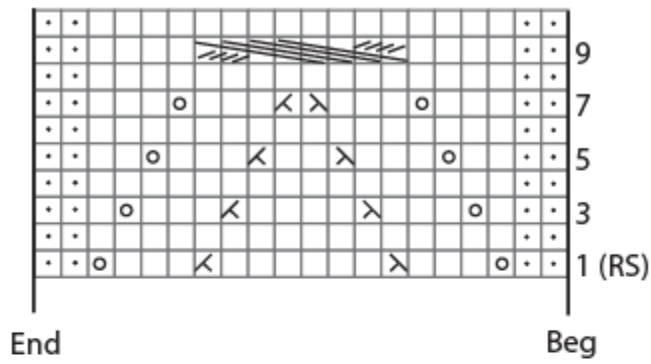
Change to larger needles, cont patt as established until collar measures approx 5 ½" from beg. BO.

Set in sleeves.

Sew side and sleeve seams.

Sew on buttons where marked.

Cable Panel




KEY □ = K on RS; P on WS

• = P on RS; K on WS

○ = Yarn over

◁ = K2tog

▷ = SSK

 = Slip 4 sts onto cn and hold in front; K4; K4 sts from cn

