



C180

Cascade Greenland
Man's Textured V-Neck Pullover



Designed By Melissa Leapman

Man's Textured V-Neck Pullover

Designed by Melissa Leapman for Cascade Yarns

Skill Level

Intermediate

Sizes

Small (Medium, Large, Extra-Large, Extra-Extra Large). Instructions are for smallest size, with changes for other sizes noted in parentheses as necessary.

Finished Measurements

Chest: 43 ½ (46 ½, 49 ½, 52 ½, 56)"

Total length: 26 (26 ½, 26 ½, 27, 27)"

Materials

Cascade Yarn's *Greenland*, 12 (12, 13, 14, 15) balls of Walnut Heather #3533

One pair *each* of sizes 6 and 8 knitting needles or size needed to obtain gauge

Cable needle

Gauge

In Textured Patt with larger needles, 2 1 sts and 28 rows = 4". **To save time, take time to check gauge.**

Stitch Patterns

Rib Pattern (*mult 4 + 2 sts*)

Row 1 (RS): *P2, K2. Repeat from * across, ending row with P2.

Row 2: *K2, P2. Repeat from * across, ending row with K2.

Repeat Rows 1 and 2 for patt.

Textured Cable Pattern (*mult 8 + 2 sts*)

See chart.

Back

With smaller needles, CO 114 (122, 130, 138, 146) sts.

Beg Rib Patt, and work even until piece measures approx 3" from beg, ending after WS row.

Change to larger needles, beg Textured Patt, and work even until piece measures approx 15 ½" from beg, ending after WS row.

Shape Armholes

BO 16 (16, 20, 24, 28) sts at beg of next two rows—82 (90, 90, 98, 98) sts rem.

Cont even in patt until piece measures approx 24 (24 ½, 24 ½, 25, 25)" from beg, ending after WS row.

Shape Neck

Next Row (RS): Work patt as established across first 21 (25, 25, 29, 29) sts, join second ball of yarn and BO middle 40 sts, work across to end row.

Work both sides at once with separate balls of yarn, and dec 1 st each neck edge once—20 (24, 24, 28, 28) sts rem each side.

Cont even until piece measures approx 25 (25 ½, 25 ½, 26, 26)" from beg, ending after WS row.

Shape Shoulders

BO 5 (6, 6, 7, 7) sts at beg of next eight rows.

Front Work same as back until piece measures approx 18 (18 ½, 18 ½, 19, 19)" from beg, ending after WS row.

Shape Neck

Next Row (RS): Work across first 39 (43, 43, 47, 47) sts, K2tog; join second ball of yarn, SSK, and work to end row.

Work both sides at once with separate balls of yarn, and dec 1 st each neck edge every other row eighteen

times, then every fourth row once—20 (24, 24, 28, 28) sts rem each side.

Cont even until piece measures same as back to shoulders.

Shape Shoulders

Work same as for back.

Sleeves

With smaller needles, CO 50 sts.

Beg Rib Patt, and work even until piece measures approx 3" from beg, ending after WS row.

Change to larger needles, beg Textured Patt, and inc 1 st each side every other row 0 (0, 0, 4, 5) times,

every fourth row 16 (26, 26, 26, 25) times, then every sixth row 9 (2, 2, 0, 0) times, working new sts into

patt as they accumulate—100 (106, 106, 110, 110) sts.

Cont even until sleeve measures approx 22 ½ (22 ¼, 22 ¾, 22 ¾, 23 ¼) from beg, ending after WS row.

BO.

Finishing

Block pieces to measurements.

Sew shoulder seams.

Neckband

With RS facing and circular knitting needle, beg at left shoulder neck edge, pick up and knit 42 sts evenly along

left front neck to center front, place marker, pick up and knit 42 sts evenly along right front neck edge, knit 52 sts

from back of neck—136 sts total. Join. Work in Rib Patt until 2 sts before marker, SSK, slip marker, k2tog, beg

with P1, work Rib Patt to end rnd. Cont in patt as established for 1", **and at the same time**, dec 1 st before and

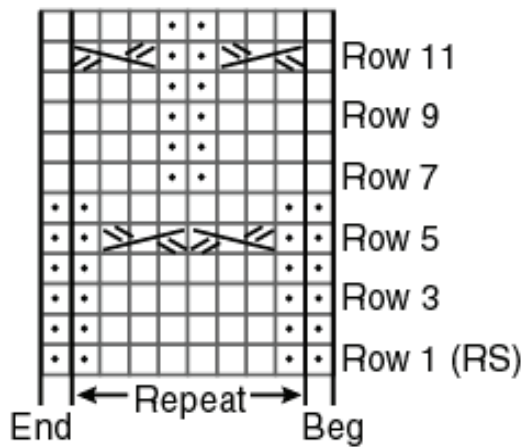
after marker every rnd.

BO in patt.

Set in sleeves.

Sew sleeve and side seams.

Textured Cable Pattern
(mult 8 + 2 sts)



KEY □ = K on RS; P on WS

• = P on RS; K on WS

⧏⧏ = Slip 2 sts onto cn and hold in back; K1; K2 from cn

⧏⧏ = Slip next st onto cn and hold in front; K2; K1 from cn

