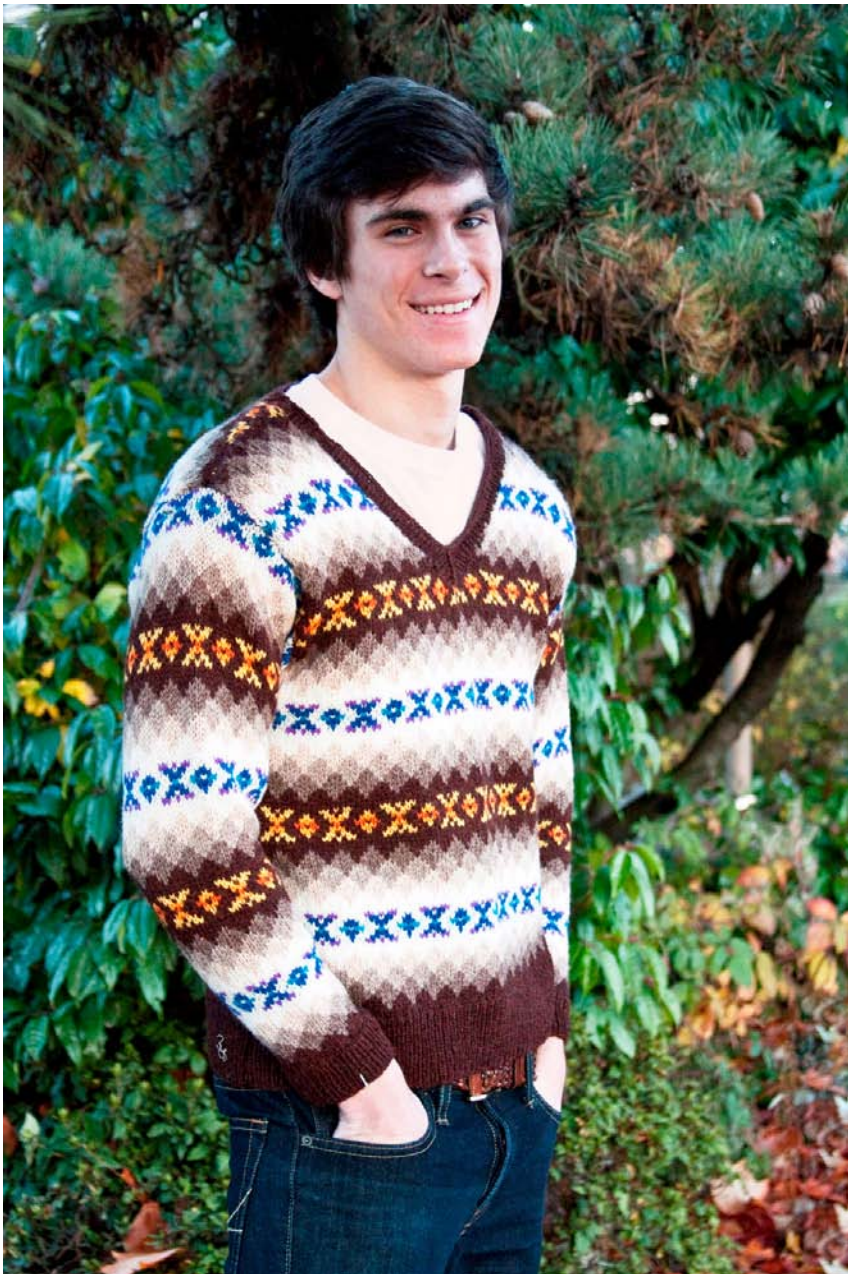


Cascade 220 Sport
Men's Retro Fair Isle V-Neck



Designed by Melissa Leapman

Man's Retro Fair Isle V-Neck

Designed by Melissa Leapman

Sizes

Small (Medium, Large, 1X, 2X). Instructions are for smallest size, with changes for other sizes noted in parentheses as necessary.

Finished Measurements

Chest: 40 (44, 48, 53, 57)"

Length: 26 (26 ½, 26 ½, 27, 27 ½)"

Materials

Cascade Yarn's *220 Sport*, 3 (4, 4, 4, 5) hanks of #9408 (A), 1 hank *each* of #8013 (B), #8012 (C), and #8021 (D), 3 (4, 4, 4, 5) hanks of #8010 (E), 1 hank *each* of #7808 (F), #7818 (G), #8891 (H), #7827 (I), #7825 (J), and #7824 (K)

One pair each of sizes 3 and 5 knitting needles or size needed to obtain gauge
Size 3 circular knitting needle, 24"

Gauge

In Stockinette St Patt in Retro Fair Isle Patt with larger needles, 22 sts and 22 rows = 4".
To save time, take time to check gauge.

K1 P1 Rib Patt (*over mult. 2 sts*)

Row 1 (RS): *K1, P1. Repeat from * across.

Patt Row: As Row 1.

Stockinette St Patt (*over any number of sts*)

Row 1 (RS): Knit across.

Row 2: Purl across.

Repeat Rows 1 and 2 for patt.

Retro Fair Isle Patt

See chart.

Back

With smaller needles and A, CO 108 (120, 132, 144, 156) sts.

Beg K1 P1 Rib Patt, and work even until piece measures approx 3" from beg, ending after WS row, inc 1 st at beg of last row—109 (121, 133, 145, 157) sts.

Change to larger needles, beg Retro Fair Isle Patt in Stockinette St, and work even until piece measures approx 16 ½" from beg, ending after WS row.

Shape Armholes

BO 12 (12, 18, 18, 24) sts at beg of next two rows—85 (97, 97, 109, 109) sts rem.

Cont even until piece measures approx 24 ½ (25, 25, 25 ½, 26)" from beg, ending after WS row.

Shape Neck

Work across first 22 (28, 28, 34, 34) sts, join second ball of yarn and BO middle 41 sts, work across to end row.

Work both sides at once with separate balls of yarn and dec 1 st each neck edge once—21 (27, 27, 33, 33) sts rem each side.

Cont even until piece measures approx 25 (25 ½, 25 ½, 26, 26 ½)" from beg, ending after WS row.

Shape Shoulders

BO 7 (9, 9, 11, 11) sts at beg of next six rows—43 sts rem.

BO.

Front

Same as back until piece measures approx 18 (18 ½, 18 ½, 19, 19 ½)" from beg, ending after WS row.

Shape Neck

Next Row (RS): Work across first 42 (48, 48, 54, 54) sts; slip middle st onto safety pin; join second ball of yarn and cont patt as established to end row.

Work both sides at once with separate balls of yarn, and dec 1 st each neck edge every row four times, then every other row seventeen times—21 (27, 27, 33, 33) sts rem.

Cont even until piece measures same as back to shoulders, ending after WS row.

Shape Shoulders

Same as back.

Sleeves

With smaller needles and A, CO 48 (48, 60, 60, 60) sts.

Beg K1 P1 Rib Patt, and work even until piece measures approx 2" from beg, ending after WS row, inc 1 st at beg of last row—49 (49, 61, 61, 61) sts.

Change to larger needles, beg Retro Fair Isle Patt in Stockinette St, and inc 1 st each side every other row 0 (1, 0, 0, 8) times, every fourth row 18 (24, 11, 21, 17) times, then every sixth row 5 (0, 8, 1, 0) times—95 (99, 99, 105, 111) sts.

Cont even until piece measures approx 22 $\frac{3}{4}$ (22, 22, 21 $\frac{1}{2}$, 21 $\frac{1}{2}$)" from beg.

BO.

Finishing

Sew shoulder seams.

Neckband

With RS facing, circular needle, and A, beg at left shoulder neck edge, pick up and knit 46 sts to center front, pick up and knit st from safety pin and mark it, pick up and knit 46 sts along right front neck and 54 sts along back of neck—146 sts total.

Work in K1 P1 Rib Patt until 1 st before marked st, slip next 2 sts at once knitwise, K1, p2sso, P2, work in Rib Patt around to end rnd—144 sts.

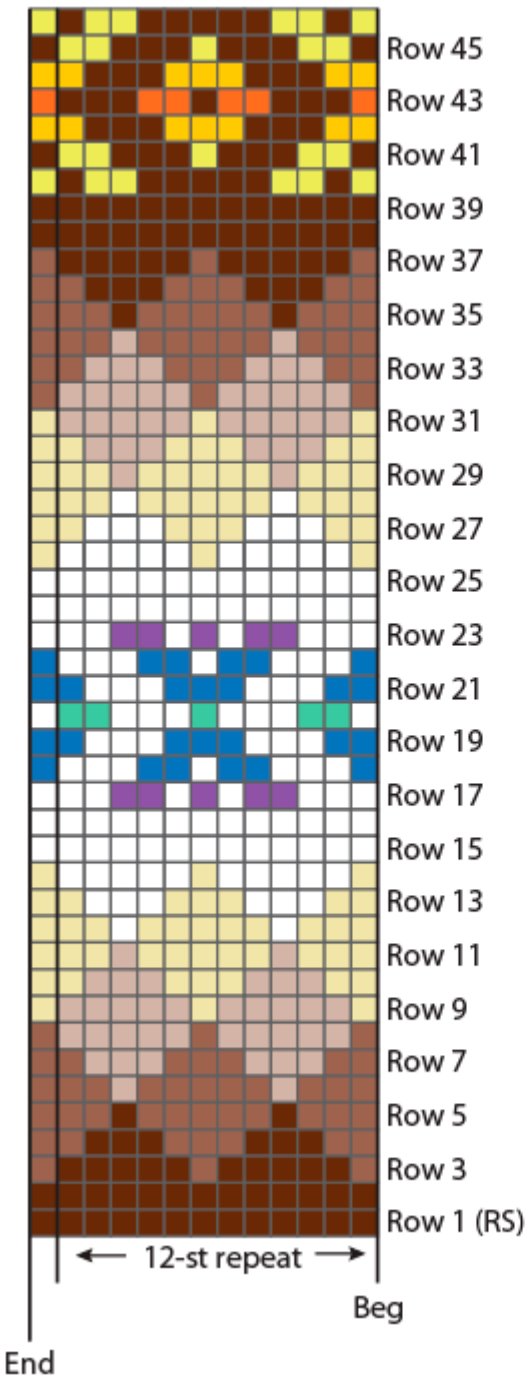
Cont in patt as established, dec 1 st before and after marker every rnd.

When band measures 1", BO *loosely* in patt.

Set in sleeves.

Sew sleeve and side seams.

Retro Fair Isle Pattern



Color Key

■ = A

■ = B

■ = C

■ = D

□ = E

■ = F

■ = G

■ = H

■ = I

■ = J

■ = K

Stitch Key □ = K on RS; P on WS

