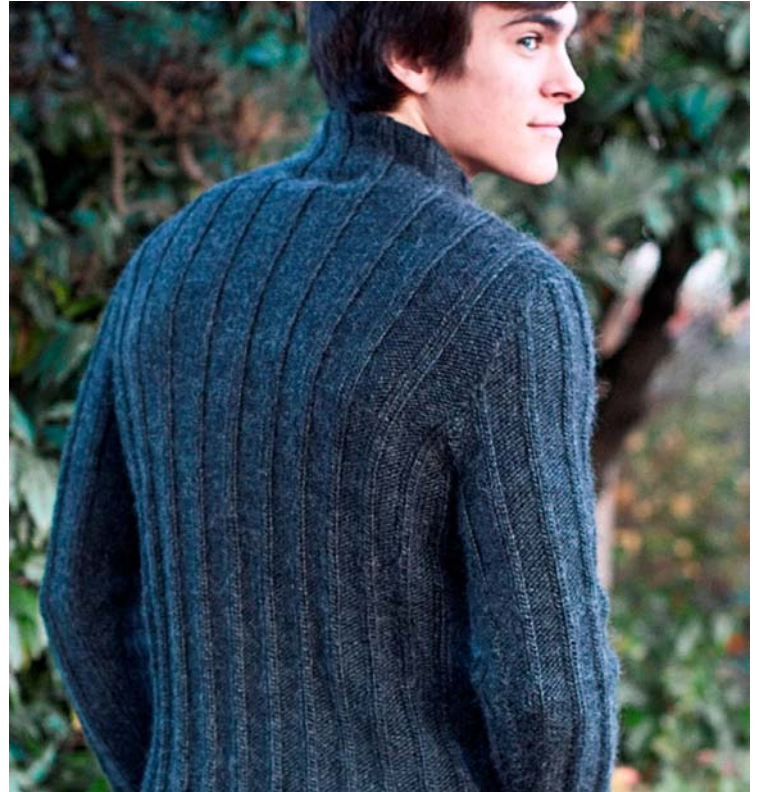
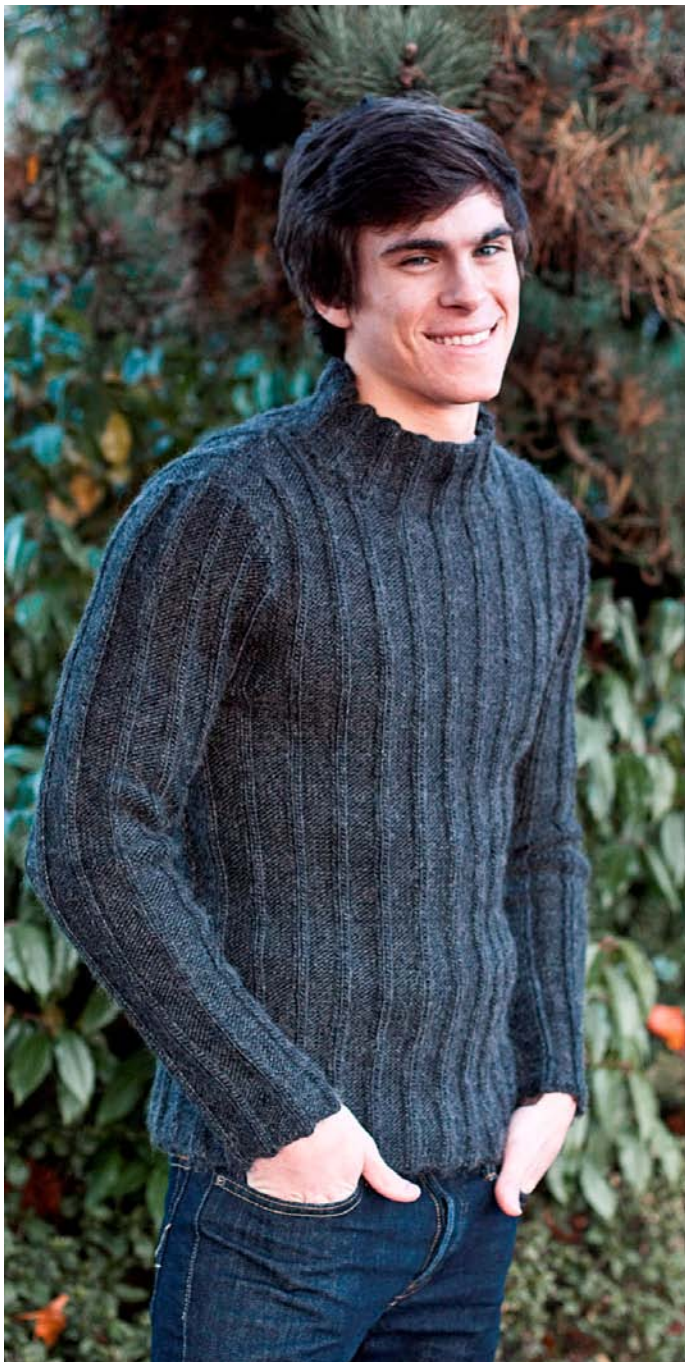




W353

Sitka

Men's Pullover



Designed by Marelle Hurter

Sitka Pullover for Men

Pattern and Design by Marelle Hurter

MATERIALS: (100g skeins) 9(10;11) balls Charcoal.

One pair each US 5 and 7 knitting needles.

Three stitch holders.

MEASUREMENTS:

To fit chest: 42(44;46) inches

Actual all round measurement of garment: Chest: 47(49;51) inches

Length to shoulder: 27(28;29) inches

Sleeve seam: 18(18;19) inches

THE INSTRUCTIONS ARE GIVEN FOR THE SMALLEST SIZE, WITH THE LARGER SIZES IN BRACKETS; WHERE ONLY ONE FIGURE IS GIVEN, IT APPLIES TO ALL SIZES.

TENSION: SAVE TIME, TAKE TIME, CHECK TENSION.

18sts and 25 rows = 3 inches over Fancy Rib Pattern (slightly stretched) using US 7 needles.

FOR BEST RESULTS IT IS ESSENTIAL TO OBTAIN THE CORRECT TENSION.

IF THERE ARE TOO FEW STS ON TEST SWATCH, USE THINNER NEEDLES;

IF THERE ARE TOO MANY STS, USE THICKER NEEDLES.

ABBREVIATIONS:

alt = alternate; **beg** = begin(ning); **cont** = continue; **dec** = decrease; **folll(s)** = follow(s)ing; **inc(s)** = increase (s); **k** = knit; **patt(s)** = pattern(s); **p** = purl; **rem** = remain; **rep** = repeat; **rev** = reverse; **R(W)SF** = right (wrong) side facing; **R(W)SR** = right(wrong) side row; **RW** = ribwise; **st(s)** = stitch(es); **tog** = together.

STICHES USED:

FANCY RIB PATTERN:

1st row: RSF, *p6sts, k2sts, rep from * to end.

2nd row: WSF, *k6sts, p2sts, rep from * to end.

Rep these 2 rows.

BACK:

Using US 7 needles cast on 110(110;)sts and cont straight in Fancy Rib Patt (SEE STS USED) and when work measures 18(18;20) inches from beg ending with a WSR, **SHAPE ARMHOLES:** Cast off 4sts at beg of next 2 rows, 3sts at beg of foll 2 rows, 2sts at beg of foll 6 rows, then dec 1 st (= work 2tog) at each end of every foll alt row 3 times = 78(78;86)sts. Cont straight and when work measures 27(29;31) inches from beg ending with a WSR, **SHAPE SHOULDERS:** Cast off 6(6;7)sts at beg of next 4 rows, then 7(6;7)sts at beg of foll 2 rows = 40(42;44)sts, leave these sts on 1st holder for back neck opening.

FRONT:

Work as for back and when work measures 25(26;28) inches from beg ending with a WSR, **SHAPE NECK:** Rib 27(26;29)sts and leave these sts on 2nd holder, leave centre 24(26;28)sts for neck opening on a 3rd holder and cont on rem sts for left side of work. **LEFT SIDE:** Work one row. Cast off 3sts at beg (neck edge) of next row, 2sts at same edge of foll 2 alt rows, then 1 st at beg of alt row = 19(18;21)sts. Cont straight and when work measures same as back to shoulder shaping ending with a RSR, **SHAPE SHOULDER** as for one side of back. **RIGHT SIDE:** WSF, rejoin yarn at neck edge, pick up sts from 2nd holder and work as for left side, rev shapings.

SLEEVES (BOTH ALIKE):

Using US 5 needles cast on 54(62;62)sts and work in Fancy Rib Patt for 2 inches ending with a WSR. Change to US 7 needles and cont in Fancy Rib Patt, inc 1 st at each end of every foll 6(8;8)th row 2(0;4) times, then every foll 8(10;10)th row 11(10;7) times = 80(82;84)sts (bringing inc sts gradually into patt). Cont straight and when work measures 18(18;19)inches from beg ending with a WSR, **SHAPE TOP OF SLEEVE:** Cast off 5 sts at beg of next 2 rows, dec 1 st at each end of next and every foll alt row 17(16;16) times in all, cast off 2sts at beg of foll 0(4;2) rows, 3sts at beg of foll 4(2;4) rows and 5sts at beg of foll 2 rows = 14(16;16)sts. Cast off rem sts RW.

TO MAKE UP:

Sew right shoulder seam. **COLLAR:** RSF, using US 5 needles, pick up and k23(22;27)sts down neck opening of front, rib 24(26;28)sts as they appear from 3rd holder, k23(22;27)sts up neck opening of front and pick up and rib 44(44;46)sts from 1st holder = 114(114;128)sts. Work in Fancy Rib Patt as folls: K2(k2;p2) sts, *p2(p2;k6), k6(k6,p2) rep from * to end. Cont in Fancy Rib Patt as now set and when work measures 2.75 inches from beg ending with a WSR, cast off all sts RW. Sew left shoulder seam and collar ends. Set in sleeves, sew up side and sleeve seams. Block garment to measurement, cover with a damp cloth and allow to dry.