



A137

Eco Wool
Single Stranded Tunic



Designed By Susie Bonell

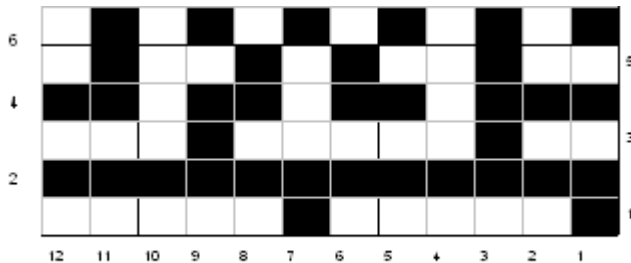
ECO WOOL SINGLE-STRANDED TUNIC
Designed by Susie Bonell

MATERIALS: Cascade Yarns Ecological Wool: 1 skein each colors A) #8014, B) #8016, C) #8061, D) #8085, E) #8087. with darkest being color A and gradually getting lighter to color E being the lightest.

Needles size 7, 9; size 7 dbl pointed
Yarn needle

GAUGE: 4 sts = 1", 6 rows = 1" in stockinette stitch

FINISHED MEASUREMENTS: 36", 42", 47"; Length 26 ½"



Black squares = color previously used, white squares are new color.

BACK

With Color A and size 7 needles, cast on 72, 84, 96 sts and work in garter stitch (knit every row) for 1".

Change to larger needles and work in stockinette stitch (K1 row, P1 row) for 6 rows.

Work rows 1-6 of chart using color A for the black squares and color B for the white squares.

Working now with color B only, work 4 ½" above pattern work.

Work rows 1-6 of chart using color B for the black squares and color C for the white squares.

Work 5" in color C.

Work rows 1-6 of chart using color C for the black squares and color D for the white squares.

Work 5" in color D. AT THE SAME TIME begin raglan decreases to follow when back measures 16".

Work rows 1-6 of chart using color D for the black squares and color E for the white squares.

Work remainder of back in color E.

Raglan Decreases: At 16", on right side row, bind off 4, 8, 8 sts at the beg of the next 2 rows.

Dec Row: (right side) K2, K2tog, work to last 4 sts, sl1, K1, pss0, K2 working decreases as follows:

Dec 1 st ea side every 2nd row 14, 7, 16 times.

Dec 1 st ea side every 4th row 8, 12, 8 times.

Bind off remaining.

FRONT

Work as for back until front measures 23".

Begin Neck Shaping:

Work to center 14, 16, 16 sts, attach another ball of yarn and bind off 14, 16, 16 sts, complete row.

Working both sides at once, dec 1 st at each neck edge every other row 6, 7, 8 times. Continue until measures same as back length. Bind off.

SLEEVES

With smaller needles and color A cast on 36, 42, 42 sts. Work in garter st for 1".

Change to larger needles and stockinette stitch and work as for back. NOTE: 2nd and 3rd sizes will repeat chart 3 ½ times across to start. Add stitches in pattern as they are added on to the sleeve. Sleeve for small size will be 16" as written. For longer sleeve and larger sizes, add more rows to solid areas to lengthen. (For example: 2 more rows in 3 color sections will add 1" to length and still maintain pattern)

Work 1 row even after garter stitch band.

Inc 1 st on each side every 6th row 6, 2, 10 times.

Inc 1 st on each side every 8th row 8, 11, 5 times.

Cap Shaping

When sleeve is desired length to armhole, bind off 4, 8, 8 sts at the beg of next 2 rows.

On next right side row using Dec Row as for back, dec 1 st each side.

Dec every 2nd row 19, 16, 18 times.

Dec every 4th row 4, 7, 7 times.

Bind off.

Weave in all ends.

Sew sleeves onto body and side seams.

Neck Trim

With size 7 dpns and right side facing, pick up and knit 90, 96, 110 sts around neck. Work in garter stitch (K one row, P one row in the round) for ¾". (Dec 1 st at shoulders if necessary to keep trim flat.)

Bind off. Weave in ends and steam lightly if needed.