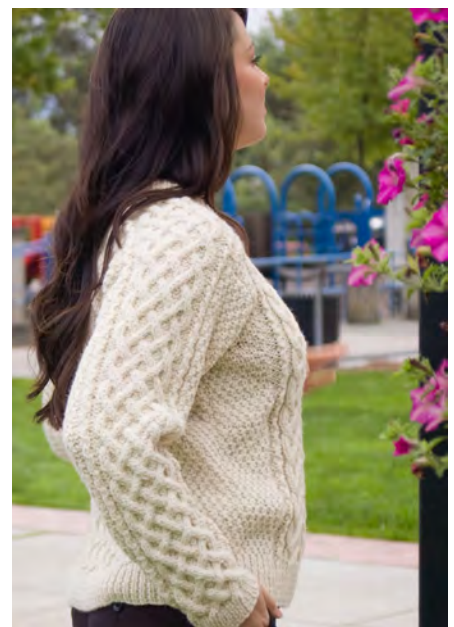


Eco Wool  
Saddle Shoulder Aran



Designed by Melissa Leapman

# Eco Wool Saddle Shoulder Aran

Designed by Melissa Leapman

## Sizes

Small (Medium, Large, 1X, 2X). Instructions are for smallest size, with changes for other sizes noted in parentheses as necessary.

## Finished Measurements

Bust: 35 (39, 43, 47, 51)"

Total length: 24 (24, 24 ½, 24 ½, 25)"

## Materials

- Cascade's Ecological Wool, 3 (3, 4, 4, 5) hanks of #8010
- One pair of sizes 8 and 10 knitting needles or size needed to obtain gauge
- One 16" circular knitting needle, size 8

## Gauge

In Double Seed St Patt with larger needles, 16 sts and 21 rows = 4".

In patt with larger needles, middle 72 sts of back measure 12 ½" across.

**To save time, take time to check gauge.**

## Stitch Patterns

**Rib Pattern** (*mult 2 sts*)

**Row 1 (RS):** \*K1, P1. Repeat from \* across.

**Patt Row:** As Row 1.

**Double Seed St Pattern** (*mult 2 + 1 sts*)

See chart.

**Cable Panel A** (*over 6 sts*)

See chart.

**Cable Panel B** (*over 12 sts*)

See chart.

**Cable Panel C** (*over 24 sts*)

See chart.

## Note

- ♦ Instructions include one selvedge st each side; these sts are not reflected in final measurements.

## Back

With smaller needles, CO 94 (102, 110, 118, 126) sts.

Beg Rib Patt, and work even until piece measures approx 2 ½" from beg, ending after WS row.

### Set Up Patts

**Next Row (RS):** Change to larger needles, work Row 1 of Double Seed St Patt across first 11 (15, 19, 23, 27) sts, work Row 1 of Cable Panel A over next 6 sts, work Row 1 of Cable Panel B over next 12 sts, work Row 1 of Cable Panel A over next 6 sts, work Row 1 of Cable Panel C over next 24 sts, work Row 1 of Cable Panel A over next 6 sts, work Row 1 of Cable Panel B over next 12 sts, work Row 1 of Cable Panel A over next 6 sts, work Row 1 of Double Seed St Patt across 11 (15, 19, 23, 27) sts to end row.

Cont even in patts as established<sup>1</sup> until piece measures approx 14 ½" from beg, ending after WS row.

### **Shape Armholes**

BO 7 (10, 13, 16, 19) sts at beg of next two rows—80 (82, 84, 86, 88) sts rem.

Cont even until piece measures approx 20 ½ (20 ½, 21, 21, 21 ½)" from beg, ending after WS row.

### **Shape Shoulders**

BO 10 (10, 11, 11, 12) sts at beg of next two rows, then BO 10 (11, 11, 12, 12) sts at beg of next two rows.

BO rem 40 sts.

## **Front**

Same as back until piece measures approx 20 (20, 20 ½, 20 ½, 21)" from beg, ending after WS row.

### **Shape Neck**

Work across first 30 (31, 32, 33, 34) sts, join second ball of yarn and BO middle 20 sts, work to end row.

Work both sides at once with separate balls of yarn and BO 9 sts each neck edge once, then dec 1 st each neck edge every row once—20 (21, 22, 23, 24) sts rem each side.

Cont even until piece measures same as back to shoulders.

### **Shape Shoulders**

Same as for back.

## **Sleeves**

With smaller needles, CO 50 sts.

Beg Rib Patt, and work even until piece measures approx 2" from beg, ending after WS row.

### **Set Up Patts**

**Next Row (RS):** Change to larger needles, work Row 1 of Double Seed St Patt over first 7 sts, work Row 1 of Cable Panel A over next 6 sts, work Row 1 of Cable Panel C over middle 24 sts, work Row 1 of Cable Panel A over next 6 sts, work Row 1 of Double Seed St Patt over next 7 sts to end row.

Cont patts as established, and inc 1 st each side every other row 0 (0, 0, 0, 4) times, every fourth row 6 (7, 15, 18, 17) times, every sixth row 11 (10, 4, 1, 0) times, working new sts into Double Seed St Patt as they accumulate—84 (84, 88, 88, 92) sts.

Cont even until sleeve measures approx 21 ¼ (21 ½, 21 ¼, 21, 21 ¼)" from beg, ending after WS row.

### **Shape Saddle**

BO 24 (24, 26, 26, 28) sts at beg of next two rows--36 sts rem.

Cont even in patts as established until saddle measures same as width of one shoulder.

BO.

## **Finishing**

Sew shoulder seams, inserting sleeve saddle in between front and back.

### **Neckband**

With circular needle, pick up and knit 90 sts around neck opening.

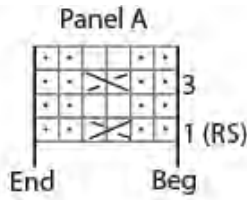
Round 1 (RS): \*K1, P1. Repeat from \* around.

Repeat last round until neckband measures approx 2 ½" from beg.

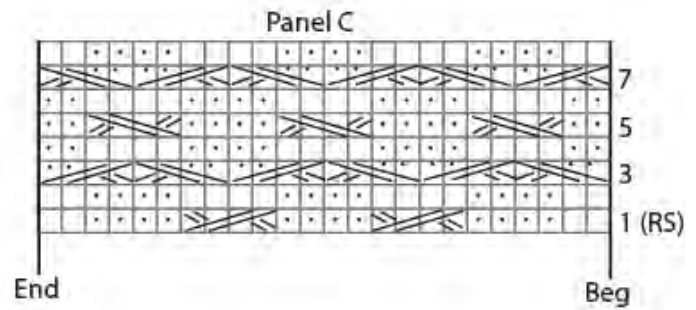
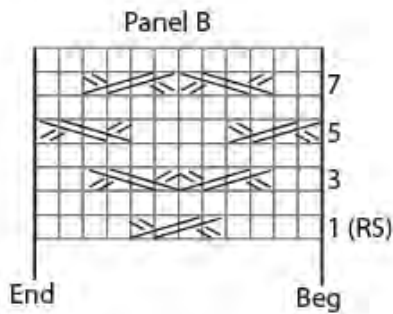
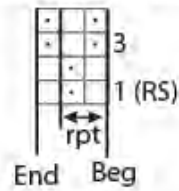
BO *loosely*.

Fold neckband in half to WS and loosely whipstitch into place.

Sew sleeve and side seams.



Double Seed Stitch Pattern



KEY □ = K on RS; P on WS

· = P on RS; K on WS

⌘ = Right Twist = Slip next st onto cn and hold in back; K1; K1 from cn OR K2tog, leaving them on LH needle; insert point of RH needle between these 2 sts and K the first one again

⌘ = Left Twist = Slip next st onto cn and hold in front; K1; K1 from cn OR skip first st and K next st in back loop; then K the skipped st; slip both sts off LH needle together

⌘⌘ = Slip 2 sts onto cn and hold in back; K2; K2 from cn

⌘⌘ = Slip 2 sts onto cn and hold in front; K2; K2 from cn

⌘⌘ = Slip 2 sts onto cn and hold in back; K2; P2 from cn

⌘⌘ = Slip 2 sts onto cn and hold in front; P2; K2 from cn