



DK175

Lana D'Oro

Lace Sampler Tunic



Designed by Melissa Leapman

Lana D'Oro Lace Sampler Tunic

Designed by Melissa Leapman

Sizes

Small (Medium, Large, 1X, 2X). Instructions are for smallest size, with changes for other sizes noted in parentheses as necessary.

Finished Measurements

Bust: 36 (40 ¼, 42 ½, 44 ½, 54)"

Length: 29 (29 ½, 29 ½, 30, 30)"

Materials

- Cascade Yarn's *Lana D'Oro* , 5 (5, 5, 6, 6) hanks
- One pair each of sizes 6 and 7 knitting needles or size needed to obtain gauge

Gauge

In Lace Patt with larger needles, 18 sts and 28 rows = 4". **To save time, take time to check gauge.**

Border Patt (over mult. 10 + 1 sts)

See chart.

Lace Patt (over mult. 20 + 1 sts)

See chart.

Garter St Patt

Patt Row: Knit across.

Back

With smaller needles, CO 81 (91, 101, 111, 121) sts.

Beg Border Patt, and work even until Row 10 is completed.

Change to larger needles, beg Lace Patt, and work even until piece measures approx 19 ½" from beg, ending after WS row.

Shape Armholes

BO 10 (10, 15, 20, 20) sts at beg of next two rows—61 (71, 71, 71, 81) sts rem.

Cont even until piece measures approx 27 ½ (28, 28, 28 ½, 28 ½)" from beg, ending after WS row.

Shape Neck

Next Row (RS): Work across first 16 (21, 21, 21, 26) sts, join second ball of yarn and BO middle 29 sts, work to end row.

Work both sides at once with separate balls of yarn and dec 1 st each neck edge once—15 (20, 20, 20, 25) sts rem each side.

Cont even until piece measures approx 28 (28 ½, 28 ½, 29, 29)" from beg, ending after WS row.

Shape Shoulders

BO 4 (5, 5, 5, 6) sts at beg of next six rows, then BO 3 (5, 5, 5, 7) sts at beg of next two rows.

Front

Same as back until piece measures approx 24 (24 ½, 24 ½, 25, 25)" from beg, ending after WS row.

Shape Neck

Next Row (RS): Work across first 24 (29, 29, 29, 34) sts; join second ball of yarn and BO middle 13 sts, cont patt as established to end row.

Work both sides at once with separate balls of yarn, and BO 3 sts each neck edge once, BO 2 sts each neck edge twice, then dec 1 st each neck edge every row twice—15 (20,

20, 20, 25) sts rem each side.

Cont even until piece measures same as back to shoulders, ending after WS row.

Shape Shoulders

Same as back.

Sleeves

With smaller needles, CO 41 sts.

Beg Border Patt, and work even until Row 10 is completed.

Change to larger needles, beg Lace Patt, and inc 1 st each side every fourth row 0 (2, 6, 19, 20) times, every sixth row 11 (18, 14, 4, 3) times, then every eighth row 7 (0, 0, 0, 0) times, working new sts into patt as they accumulate—77 (81, 81, 87, 87) sts.

Cont even until piece measures approx 21 $\frac{3}{4}$ (21, 21, 21, 20 $\frac{1}{2}$)" from beg, ending after WS row.

BO.

Finishing

Sew left shoulder seam.

Neckband

With RS facing and smaller needles, pick up and knit 126 sts around neckline.

Beg Garter St Patt, and work even until band measures approx $\frac{1}{2}$ " from beg.

Next Row: Knit, dec 18 sts evenly spaced—108 sts rem.

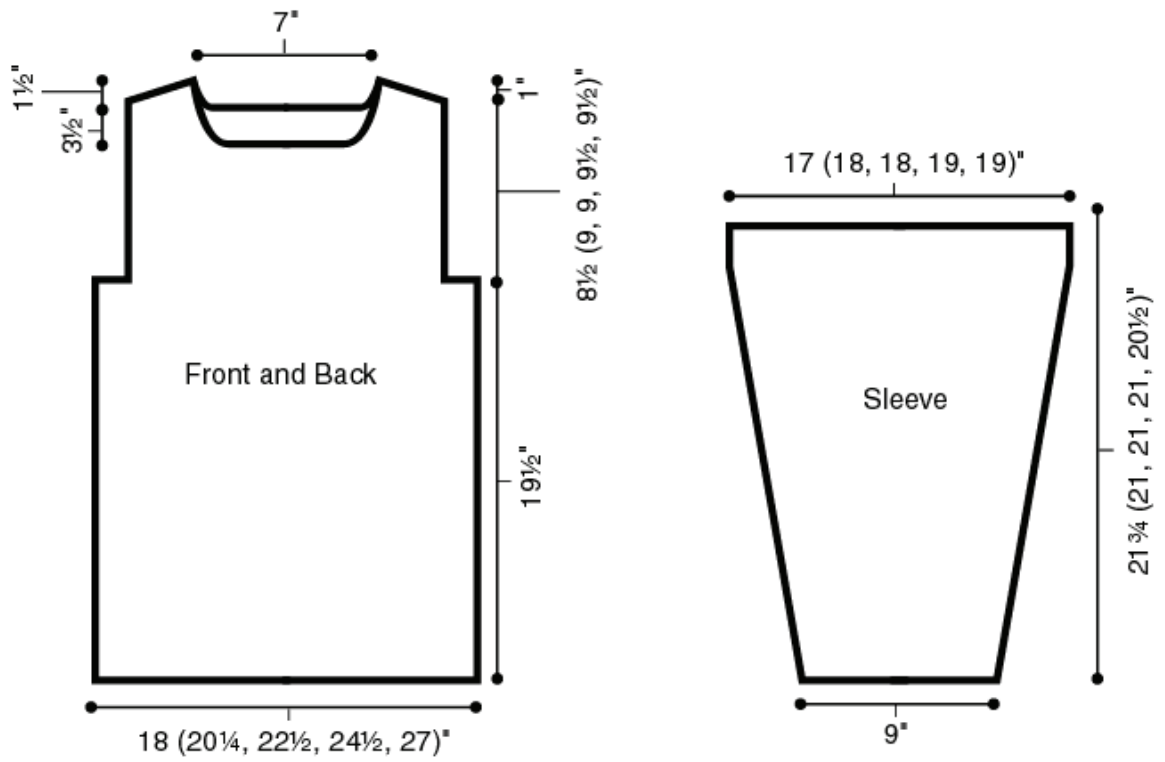
Cont even until band measures approx 1" from beg.

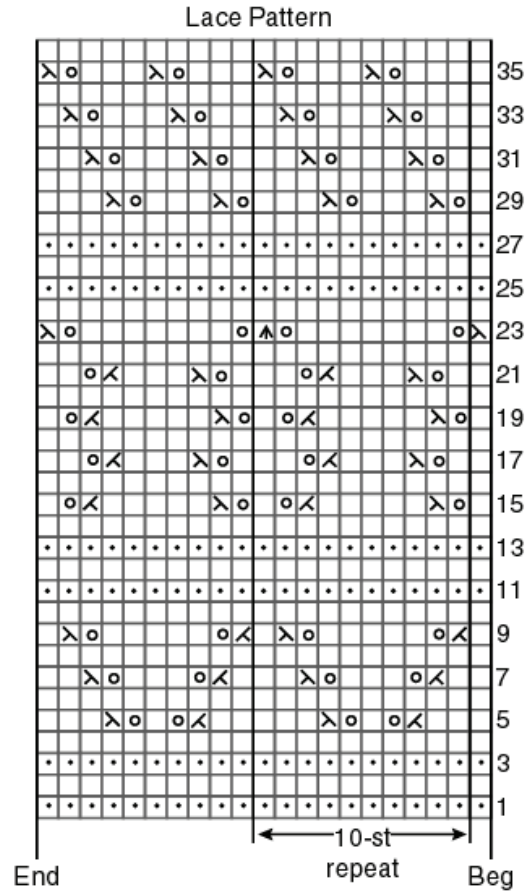
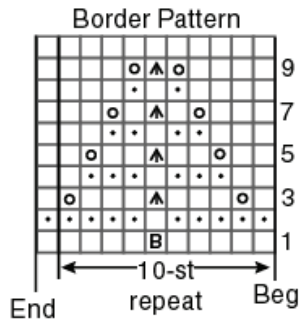
BO.

Sew right shoulder seam, including side of neckband.

Set in sleeves.

Sew sleeve and side seams.





KEY □ = K on RS; P on WS

• = P on RS; K on WS

◁ = K2tog

λ = SSK

▲ = Slip 2 sts at once knitwise; K1; p2sso

Ⓑ = Bobble = K into (front, back, front) of next st, turn; P1, (P1, yarn over, P1) all into next st, P1, turn; K5, turn; P2tog, P1, P2tog, turn; slip 2 sts at once knitwise, K1, p2sso

○ = Yarn over