



DK204

220 Superwash Sport
Place Lace Pullover



Designed By Melissa Leapman

220 Superwash Sport Placed Lace Pullover

Designed by Melissa Leapman

Skill Level

Intermediate

Sizes

Small (Medium, Large, 1X, 2X). Instructions are for smallest size, with changes for other sizes noted in parentheses as necessary.

Finished Measurements

Bust: 34 (38, 41, 45, 48 ½)"

Total length: 24 (24 ½, 25, 25 ½, 25 ½)"

Materials

- Cascade Yarn's *220 Superwash Sport*, 9 (10, 11, 12, 13) hanks
- One pair each of sizes 4 and 5 knitting needles

Gauge

In Lace Border Patt with larger needles, 18 sts and 32 rows = 4".

In Stockinette St Patt with larger needles, 24 sts and 32 rows = 4". **To save time, take time to check gauge.**

Garter Patt

Row 1 (RS): Knit across.

Patt Row: As Row 1.

Border Lace Patt

See chart.

Stockinette St Patt

Row 1 (RS): Knit across.

Row 2: Purl across.

Repeat Rows 1 and 2 for patt.

Notes

- For fully-fashioned increases on RS rows, work 2 sts in patt as established, M1, work across until 2 sts rem in row, ending row with M1, work patt as established across last 2 sts.
- For fully-fashioned decreases: On RS rows, K2, SSK, work across in patt as established until 4 sts rem, ending row with K2tog, K2; on WS rows, P2, P2tog, work across in patt as established until 4 sts rem in row, ending row with SSP, P2.

Back

With smaller needles, CO 65 (72, 79, 86, 93) sts.

Beg Garter Patt, and work even until piece measures approx 1" from beg, ending after WS row, inc 12 (13, 14, 15, 16) sts evenly spaced across last row—77 (85, 93, 101, 109) sts.

Change to larger needles, beg Lace Border Patt, and work even until piece measures approx 5 ½" from beg, ending after Row 14 of patt, inc 25 (29, 29, 33, 37) sts evenly space across last row—102 (114, 122, 134, 146) sts.

Beg Stockinette St Patt, and work even until piece measures approx 15 ½" from beg, ending after WS row.

Shape Armholes

BO 5 (6, 7, 8, 9) sts at beg of next two rows, BO 2 (3, 3, 4, 5) sts at beg of next two rows, then work fully-fashioned decreases each side every row 0 (0, 2, 8, 14) times, every other row 4 (9, 9, 6, 3) times, then every fourth row 2 (0, 0, 0, 0) times—76 (78, 80, 82, 84) sts rem.

Cont even until piece measures approx 22 ½ (23, 23 ½, 24, 24)" from beg, ending after WS row.

Shape Neck

Next Row (RS): Work across first 16 (17, 18, 19, 20) sts, join second ball of yarn and BO middle 44 sts, work to end row.

Work both sides at once with separate balls of yarn and dec 1 st each neck edge once—15 (16, 17, 18, 19) sts rem each side.

Cont even until piece measures approx 23 (23 ½, 24, 24 ½, 24 ½)" from beg, ending after WS row.

Shape Shoulders

BO 4 (4, 4, 5, 5) sts at beg of next six rows, then BO 3 (4, 5, 3, 4) sts at beg of next two rows.

Front

Same as back until piece measures approx 19 ½ (20, 20 ½, 21, 21)" from beg, ending after WS row.

Shape Neck

Work across first 28 (29, 30, 31, 32) sts, join second ball of yarn and BO middle 20 sts, work across to end row.

Work both sides at once with separate balls of yarn, and BO 4 sts each neck edge once, BO 3 sts each neck edge once, BO 2 sts each neck edge twice, then dec 1 st each neck edge every row twice—15 (16, 17, 18, 19) sts rem each side.

Cont even, if necessary, until piece measures same as back to shoulders.

Shape Shoulders

Same as back.

Sleeves

With smaller needles, CO 31 sts.

Beg Garter Patt, and work even until piece measures approx 1" from beg, ending after WS row, inc 6 sts evenly across last row—37 sts.

Change to larger needles, beg Lace Border Patt, and work Rows 1-12, inc 13 sts evenly spaced across last row—50 sts.

Beg Stockinette St Patt, and work fully-fashioned increases (see Notes) each side every fourth row 0 (0, 0, 1, 10) times, every sixth row 0 (1, 9, 9, 13) times, every eighth row 1 (14, 8, 0, 0) times, then every tenth row 11 (0, 0, 0, 0) times—74 (80, 84, 90, 96) sts.

Cont even until piece measures approx 18 ½" from beg, ending after WS row.

Shape Cap

BO 5 (6, 7, 8, 9) sts at beg of next two rows, then work fully-fashioned decreases (see Notes) each side every other row 16 (18, 22, 24, 22) times, then every row 4 (4, 1, 1, 5) times—24 sts rem.

Work 1 (1, 0, 0, 0) row even.

BO 2 sts at beg of next four rows—16 sts rem.

BO.

Finishing

Sew left shoulder seam.

Neckband

With RS facing and smaller needles, pick up 145 sts evenly-spaced along neckline.

Beg Garter Patt, and work even until neckband measures approx ½" from beg.

Next Row: Cont in Garter St, and dec 22 sts evenly across—123 sts rem.

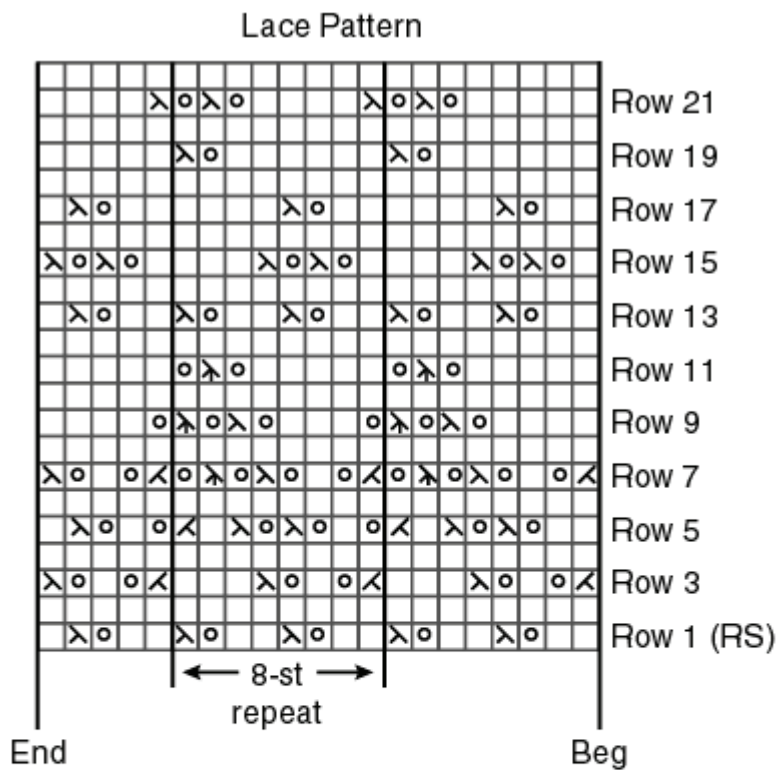
Cont until neckband measures approx 1" from beg.

BO.

Sew right shoulder seam, including neckband.

Set in sleeves.

Sew sleeve and side seams.



KEY □ = K on RS; P on WS

○ = Yarn over

◁ = K2tog

▷ = SSK

⋈ = Slip next st, K2tog, pssso

