



DK230

220 Superwash Sport
Graceful Cabled Tunic



Designed By Fiona Ellis

220 Superwash Sport Graceful Cabled Tunic

By Fiona Ellis

FINISHED MEASUREMENTS:

Bust: 31½ (35½, 39½, 43½, 47½, 51½)" / 80 (90, 100.5, 110.5, 120.5, 131) cm.

Length: 24½ (25, 25½, 26½, 26½, 27½)" / 62 (63.5, 65, 67, 67, 70) cm.

MATERIALS

220 Superwash Sport 136 yards / 125 meters per 1¾ oz / 50 gram skein; 100% Superwash wool.

M/C shade # 1946: 8 (9, 11, 11, 12, 14) skeins

C/C shade # 1913: 1 skein all sizes

Size 6 US / 4 mm needles, circ US Size 6 / 4 mm needle (16" / 40.5 cm long) for neckline, cable needle, 1 stitch holder.

GAUGE:

24 sts and 26 rows = 4" / 10 cm over St st.

To save time and to ensure accurate sizing, check gauge.

STITCH GLOSSARY

Seed st- even number of sts: Row 1: [K1, p1] to end. Row 2: [P1, k1] to end.

ABBREVIATIONS / KEY TO CHART



Knit on RS rows, Purl on WS rows



Purl on RS rows, Knit on WS rows



C2B: Slip next st onto CN, hold at back of work, k1 from left needle, then k1 from CN.



C2F: Slip next st onto CN, hold at front of work, k1 from left needle, then k1 from CN.



T2B: Slip next st onto CN, hold at back of work, k1 from left needle, then p1 from CN.



T2F: Slip next st onto CN, hold at front of work, p1 from left needle, then k1 from CN.

NOTE: When working cable crosses on WS rows:

Sts held at the front = towards you as you work not the public side of the work.

Sts held at the back = away from you as you work not the non-public side of the work.



C2Bp: Slip next st onto CN, hold at back of work, p1 from left needle, then p1, from CN.



C2Fp: Slip next st onto CN, hold at front of work, p1 from left needle, then p1, from CN.

BACK

Using M/C and size 6 US / 4 mm needles and M/C cast on 94 (106, 118, 130, 142, 154) sts, work 2 rows in seed st.

Set-up row 1 (RS): P3, [k1, p2] to last 4 sts, k1, p3.

Set-up row 2: K3, p1, [k2, p1] to last 3 sts k3.

Establish border pattern:

Row 1 (RS): Following row 1 Chart A, p2, work 6 st patt rep 15 (17, 19, 21, 23, 25) times, p2.

Row 2: Following row 2 Chart A, k2, work 6 st patt rep 15 (17, 19, 21, 23, 25) times, k2.

Cont working rows 3-14 in sequence

Establish main pattern:

Row 1 (RS): P2, k1, [p4, C2B] 4 (5, 6, 7, 8, 9) times, p4, k2, p4, C2B, work row 1 Chart C over next 16 sts, C2B, p4, k2, [p4, C2B] 4 (5, 6, 7, 8, 9) times, p4, k1, p2.

Row 2: Following row 2 for all charts, k25 (31, 37, 43, 49, 55), work Chart D over next 14 sts, work Chart C over next 16 sts, work Chart B over next 14 sts, k25 (31, 37, 43, 49, 55).

Row 3: Following row 3 for all charts, p25 (31, 37, 43, 49, 55), work Chart B (14 sts), then Chart C (16 sts), followed by Chart D (14 sts), p25 (31, 37, 43, 49, 55).

Row 4: Following row 4 for both charts, k25 (31, 37, 43, 49, 55), work Chart D, then Chart C, followed by Chart B, k25 (31, 37, 43, 49, 55).

Cont working chart rows in sequence until row 10 for Charts B & D have been completed.

Then cont working rows in sequence for Chart C as established and working rows 11-22 (12 row rep) only for Charts B & D until Back meas $4\frac{3}{4}$ ($5\frac{1}{4}$, $5\frac{1}{4}$, $5\frac{3}{4}$, $5\frac{3}{4}$, $6\frac{1}{4}$)" / 12 (13.5, 13.5, 14.5, 14.5, 16) cm from beg, end with a RS row facing for next row.

Shape waist:

Dec row: Cont in patt as set dec 1 st at each end of row. 92 (104, 116, 128, 140, 152) sts rem.

Work 5 rows even in patt.

Rep the last 6 rows 3 more times, plus dec row once more. 84 (96, 108, 120, 132, 144) sts rem.

Work 5 rows even in patt.

Inc row: Cont in patt inc 1 st at each end of row. 86 (98, 110, 122, 134, 146) sts.

Work 5 rows even in patt.

Rep the last 6 rows, 3 more times, plus inc row once more. 94 (106, 118, 130, 142, 154) sts.

Work even in patt until Back meas 16 (16½, 16½, 17, 17, 17½)" / 40.5 (42, 42, 43, 43, 44.5) cm from beg, ending with a RS row facing for next row.

Shape armholes:

Cont in patt bind off 3 sts at beg of next 4 rows, and 2 sts at beg of following 2 rows, 78 (90, 102, 114, 126, 138) sts rem. Then dec 1 st at each end of next row and following 2 RS rows, 72 (84, 96, 108, 120, 132) sts rem.

Work even in patt until Back meas 7½ (7½, 8, 8½, 8½, 9)" / 19 (19, 20.5, 21.5, 21.5, 23) cm from beg of armhole shaping, ending with a RS row facing for next row.

Shape shoulders:

Cont in patt bind off 5 (6, 7, 9, 10, 11) sts at beg of next 4 rows, then bind off 5 (6, 8, 9, 10, 11) sts at beg of following 2 rows. Bind off rem 42 (48, 52, 54, 60, 66) sts.

FRONT

Work as Back until armhole shaping is complete. 72 (84, 96, 108, 120, 132) sts rem. Work WS row even.

Divide for CF neckline opening:

Work in patt over 36 (42, 48, 54, 60, 66) sts, turn, (leave rem 36 (42, 48, 54, 60, 66) sts on spare needle for right side. Cont working even in patt until Front meas 2½" / 6.5 cm from beg of CF divide, end with a WS facing for next row.

Shape left front neck:

Next row (WS): Bind off 4 sts at beg of row, work in patt to end.

Next row: Work in patt to last 3 sts, p2tog, p1.

Rep last 2 rows once more. 26 (32, 38, 44, 50, 56) sts rem.

Cont in patt dec 1 st at neckline edge on following 11 (14, 16, 17, 20, 23) rows, 15 (18, 22, 27, 30, 33) sts rem.

Work even in patt until Front meas the same as the Back before the shoulder shaping, end with a RS row facing for next row.

Shape shoulder:

Bind off 5 (6, 7, 9, 10, 11) sts at beg of next row, work in patt to end.

Work WS row even in patt.

Rep the last 2 rows.

Bind off rem 5 (6, 8, 9, 10, 11) sts.

Shape right front neck:

Return to sts on spare needle, rejoin yarn, work in patt to end.

Cont working even in patt until Front meas 2½" / 6.5 cm from beg of CF divide, end with a RS facing for next row bind of 4 sts at beg of row, work in patt to end.

Next row: Work in patt to last 3 sts, k2togtbl, k1.

Rep last 2 rows once more. 26 (32, 38, 44, 50, 56) sts rem.

Cont in patt dec 1 st at neckline edge on following 11 (14, 16, 17, 20, 23) rows, 15 (18, 22, 27, 30, 33) sts rem.

Work even in patt until Front meas the same as the Back before the shoulder shaping, end with a WS row facing for next row.

Shape shoulder:

Bind off 5 (6, 7, 9, 10, 11) sts at beg of next row, work in patt to end.

Work RS row even in patt.

Rep the last 2 rows.

Bind of rem 5 (6, 8, 9, 10, 11) sts.

SLEEVE (make 2 alike)

Using Contrast Color and size 6 US / 4 mm needles and M/C cast on 54 sts, work 2 row in seed st.

Change to M/C and knit 1 row.

Set-up row 1 (RS): P1, [k1, p2] to last 2 sts, k1, p1.

Set-up row 2: K1, p1, [k2, p1] to last st k1.

Establish border pattern:

Row 1 (RS): Following row 1 Chart A, work 6 st patt rep 9 times across row.

Row 2: Following row 2 Chart A, work 6 st patt rep 9 times, across row.

Cont working rows 3-14 in sequence

Establish main pattern:

Row 1 (RS): K1, m1, [p4, C2B] 3 times, work row 1 Chart C over next 16 sts, [C2B, p4] 3 times, m1, k1. 56 sts.

Row 2: K20, work row 2 Chart C over next 16 sts, k20.

Row 3: P20, work row 3 Chart C, p20.

Cont working chart rows in sequence AT THE SAME TIME inc 1 st at each end of row 5 (5, 3, 3, 3, 3) and every following 6 (6, 4, 4, 4, 4)th row, 8 (6, 1, 8, 7, 17) times, 74 (70, 60, 74, 72, 92) sts, then every 8 (8, 6, 6, 6, 6)th row 4 (6, 14, 10, 11, 5) times, 82 (82, 88, 94, 94, 102) sts, work all inc sts in Rev st st. Work even in patt until Sleeve meas 17 (17½, 17¾, 18 18½, 19)" / 43 (44.5, 45, 46, 47, 48) cm from beg, end with a RS row facing for next row.

Shape cap:

Cont in patt as set bind off 3 sts at beg of next 4 rows, and 2 sts at beg of following 2 rows, 66 (66, 72, 78, 78, 86) sts rem. Then dec 1 st at each end of RS rows, 6 (6, 7, 5, 8, 4) times, 54 (54, 58, 68, 62, 78)

sts rem. Then dec 1 st at each end of every row 18 (18, 20, 24, 20, 28) times. Bind off rem 18 (18, 18, 18, 22, 22) sts.

FINISHING

Weave in ends and block pieces to given dimensions. Join both shoulder seams.

Using circ US size 6 / 4 mm needle and contrast color, beg at upper left side of center front opening with RS facing, pick up and knit 15 sts down left side of opening, 1 st at bottom of opening and a further 15 sts up right side of opening. 31 sts. Knit 1 row. Bind off all sts.

Using circ US size 6 / 4 mm needle and contrast color, beg at upper right side of center front opening with RS facing, pick up and knit 31 (31, 36, 36, 36, 41) sts up right front neck, 33 (37, 41, 43, 49, 55) sts across back neck and 31 (31, 36, 36, 36, 41) sts own left front neck. 95 (99, 113, 115, 121, 137) sts.

Working back and forth knit 1 row. Bind off all sts loosely.

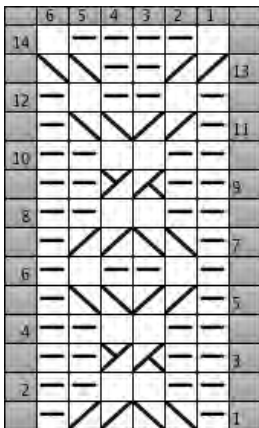
Set in sleeves to armholes. Sew side and sleeve seams.

Block lightly.

BELT

Using M/C and US size 6 / 4mm needles cast on 9 sts. Work in seed st throughout until belt meas 50 (52, 54, 56, 60, 62)"/ 127 (132,137, 142, 152. 157.5) cm. Bind off all sts.

CHART A (6 st rep)



Row 1 (RS): P1, T2F, T2B, p1.

Row 2: K2, p2, k2.

Row 3: P2, C2B, p2.

Row 4: Rep row 2.

Row 5: P1, T2B, T2F, p1.

Row 6: K1, p1, k2, p1, k1.

Rows 7-12: Rep rows 1-6 once more.

Row 13: T2B, p2, T2F.

Row 14: P1, k4, p1.

CHART B (14 st panel)

	14	13	12	11	10	9	8	7	6	5	4	3	2	1	
22															
21															
20															
19															
18															
17															
16															
15															
14															
13															
12															
11															
10															
9															
8															
7															
6															
5															
4															
3															
2															
1															

Row 1: P6, k2, p6.

Row 2: K6, p2, k6.

Row 3: P5, C2B, k1, p6.

Row 4: K6, p2, C2Bp, k4

Row 5: P3, [C2B] twice, k1, p6.

Row 6: K6, p4, C2Bp, k2.

Row 7: P1, C2B, k1, T2B, k2, p6.

Row 8: K6, p2, k1, p3, C2Bp.

Row 9: K3, T2B, p1, k1, C2F, p5.

Row 10: K4, C2Fp, p2, k2, p4.

Rows 1-10 work once only.

Row 11: K2, T2B, p2, k1 [C2F] twice, p3.

Row 12: K2, C2Fp, p4, k3, p3.

Row 13: K1, T2B, p3, k2, T2F, k1, C2F, p1.

Row 14: C2Fp, p3, k1, p2, k4, p2.

Row 15: T2B, p3, C2B, k1, p1, T2F, k3.

Row 16: P4, k2, p2, C2Bp, k4.

Row 17: P3, [C2B] twice, k1, p2, T2F, k2.

Row 18: P3, k3, p4, C2Bp, k2.

Row 19: P1, C2B, k1, T2B, k2, p3, T2F, k1.

Row 20: P2, k4, p2, k1, p3, C2Bp.

Row 21: K3, T2B, p1, k1, C2F, p3, T2F.

Row 22: K4, C2Fp, p2, k2, p4.

Rep rows 11-22 only for patt.

CHART C (16 st panel)

	16	15	14	13	12	11	10	9	8	7	6	5	4	3	2	1	
24	---	---	---	---	---	---	---	---	---	---	---	---	---	---	---	---	---
23	---	---	---	---	---	---	---	---	---	---	---	---	---	---	---	---	---
22	---	---	---	---	---	---	---	---	---	---	---	---	---	---	---	---	---
21	---	---	---	---	---	---	---	---	---	---	---	---	---	---	---	---	---
20	---	---	---	---	---	---	---	---	---	---	---	---	---	---	---	---	---
19	---	---	---	---	---	---	---	---	---	---	---	---	---	---	---	---	---
18	---	---	---	---	---	---	---	---	---	---	---	---	---	---	---	---	---
17	---	---	---	---	---	---	---	---	---	---	---	---	---	---	---	---	---
16	---	---	---	---	---	---	---	---	---	---	---	---	---	---	---	---	---
15	---	---	---	---	---	---	---	---	---	---	---	---	---	---	---	---	---
14	---	---	---	---	---	---	---	---	---	---	---	---	---	---	---	---	---
13	---	---	---	---	---	---	---	---	---	---	---	---	---	---	---	---	---
12	---	---	---	---	---	---	---	---	---	---	---	---	---	---	---	---	---
11	---	---	---	---	---	---	---	---	---	---	---	---	---	---	---	---	---
10	---	---	---	---	---	---	---	---	---	---	---	---	---	---	---	---	---
9	---	---	---	---	---	---	---	---	---	---	---	---	---	---	---	---	---
8	---	---	---	---	---	---	---	---	---	---	---	---	---	---	---	---	---
7	---	---	---	---	---	---	---	---	---	---	---	---	---	---	---	---	---
6	---	---	---	---	---	---	---	---	---	---	---	---	---	---	---	---	---
5	---	---	---	---	---	---	---	---	---	---	---	---	---	---	---	---	---
4	---	---	---	---	---	---	---	---	---	---	---	---	---	---	---	---	---
3	---	---	---	---	---	---	---	---	---	---	---	---	---	---	---	---	---
2	---	---	---	---	---	---	---	---	---	---	---	---	---	---	---	---	---
1	---	---	---	---	---	---	---	---	---	---	---	---	---	---	---	---	---

Row 1 (RS): [P4, C2B] twice, p4.

Row 2: [K4, p2] twice, k4.

Row 3: P3, T2B, T2F, p2, T2B, T2F, p3.

Row 4: K3, p1, [K2, p1] 3 times, k3.

Row 5: P3, T2F, T2B, p2, T2F, T2B, p3.

Row 6: Rep row 2.

Rows 7-10: Rep rows 1-4 once more.

Row 11: P2, T2B, p2, T2F, T2B, p2, T2F, p2.

Row 12: K2, p1, k4, p2, k4, p1, k2.

Row 13: P1, T2B, p4, C2F, p4, T2F, p1.

Row 14: K1, p1, k5, p2, k5, p1, k1.

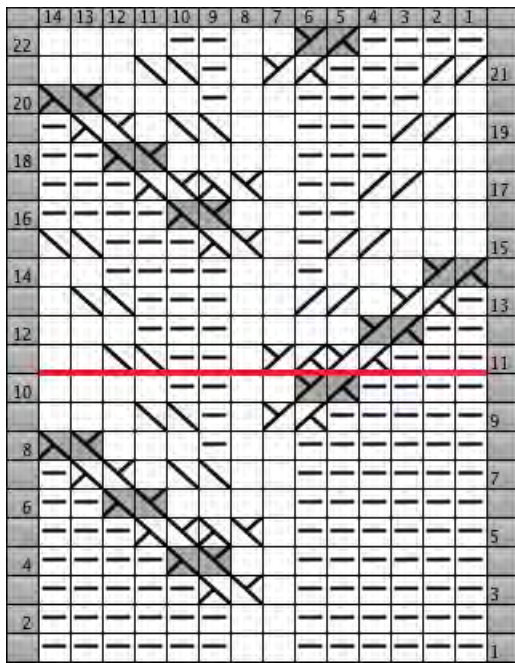
Row 15: P1, k1, p4, T2B, T2F, p4, k1, p1.

Row 16: K1, p1, k4, p1, k2, p1, k4, p1, k1.

Row 17: P1, k1, p4, T2F, T2B, p4, k1, p1.

- Row 18:** K1, p1, k5, p2, k5, p1, k1.
- Row 19:** P1, T2F, p4, C2F, p4, T2B, p1.
- Row 20:** K2, p1, k4, p2, k4, p1, k2.
- Row 21:** P2, T2F, p2, T2B, T2F, p2, T2B, p2.
- Row 22:** K3, p1, k2, p1, k2, p1, k2, p1, k3.
- Row 23:** P3, T2F, T2B, p2, T2F, T2B, p3.
- Row 24:** K4, p2, k3, p3, k4.

CHART D (14 st panel)



- Row 1:** P6, k2, p6.
 - Row 2:** K6, p2, k6.
 - Row 3:** P6, k1, C2F, p5.
 - Row 4:** K4, C2Fp, p2, k6.
 - Row 5:** P6, k1, [C2F] twice, p3.
 - Row 6:** K2, C2Fp, p4, k6.
 - Row 7:** P6, k2, T2F, k1, C2F, p1.
 - Row 8:** C2Fp, p3, k1, p2, k6.
 - Row 9:** P5, C2B, k1, p1, T2F, k3.
 - Row 10:** P4, k2, p2, C2Bp, k4.
- Rows 1-10 work once only.
- Row 11:** P3, [C2B] twice, k1, p2, T2F, k2.
 - Row 12:** P3, k3, p4, C2Bp, k2.
 - Row 13:** P1, C2B, k1, T2B, k2, p3, T2F, k1.

Row 14: P2, k4, p2, k1, p3, C2Bp.

Row 15: K3, T2B, p1, k1, C2F, p3, T2F.

Row 16: K4, C2Fp, p2, k2, p4.

Row 17: K2, T2B, p2, k1, [C2F] twice, p3.

Row 18: K2, C2Fp, p4, k3, p3.

Row 19: K1, T2B, p3, k2, T2F, k1, C2F, p1.

Row 20: C2Fp, p3, k1, p2, k4, p2.

Row 21: T2B, p3, C2B, k1, p1, T2F, k3.

Row 22: P4, k2, p2, C2Bp, k4.

Rep rows 11-22 only for patt.