

W198

# *Empire Waist Pullover In Cascade Sierra*



*Designed by Melissa Leapman for Cascade Yarns*

# Empire Waist Pullover

CYPW198

Designed by Melissa Leapman for Cascade Yarns

## Skill Level

Intermediate

## Sizes

Small (Medium, Large, 1X, 2X). Instructions are for smallest size, with changes for other sizes noted in parentheses as necessary.

## Finished Measurements

Bust: 34 (37, 42, 45, 48 ½)"

Total length: 24 (24 ½, 25, 25 ½, 26)"

## Materials

- ◆ Cascade Yarn's *Sierra*, 7 (8, 9, 9, 10) hanks of #13
- ◆ One pair of size 7 knitting needles or size needed to obtain gauge
- ◆ One size 6 circular needle, 16"
- ◆ Two size 6 double-pointed needles

## Gauge

In Lace Patt with larger needles, 20 sts and 28 rows = 4"; in Stockinette St Patt with larger needles, 20 sts and 28 rows = 4". To save time, take time to check gauge.

## Stitch Patterns

**Lace Pattern** (mult 14 + 9 sts)

See chart.

**Garter St Pattern**

**Patt Row:** Knit across.

Repeat Patt Row for patt.

**Stockinette St Pattern**

**Row 1 (RS):** Knit across.

**Row 2:** Purl across.

Repeat Rows 1 and 2 for patt.

## Notes

- ◆ For fully-fashioned single decreases: On RS rows, K2, SSK, work across in patt as established until 4 sts rem, ending row with K2tog, K2; on WS rows, P2, P2tog, work across in patt as established until 4 sts rem in row, ending row with SSP, P2.

- ◆ Smaller sized needles are only used for neckband.

## Back

With larger needles, CO 93 (107, 121, 135, 149) sts.

Beg Lace Patt, and work even until piece measures approx 11 ½ (11 ½, 12, 12, 12 ½)" from beg, ending after Row 6 of patt.

Work four rows of Garter St, dec 8 (14, 16, 22, 28) sts evenly spaced across first row—85 (93, 105, 113, 121) sts rem.

Beg Stockinette St, and work even until piece measures approx 16" from beg, ending after WS row.

### Shape Armholes

BO 5 (6, 7, 8, 9) sts at beg of next two rows, BO 2 (2, 3, 3, 4) sts at beg of next two rows, then work fully-fashioned decreases each side (see Note) every row 0 (2, 4, 4, 4) times, every other row 2 (2, 4, 7, 8) times, then every fourth row 2 (2, 1, 0, 0) times—63 (65, 67, 69, 71) sts rem.

Cont even in patt until piece measures approx 22 ½ (23, 23 ½, 24, 24 ½)" from beg, ending after WS row.

### Shape Neck

Next Row (RS): Work across first 15 (16, 17, 18, 19) sts, join second ball of yarn and BO middle 33 sts, work across to end row.

Dec 1 st each neck edge once—14 (15, 16, 17, 18) sts rem each side.

Cont even until piece measures approx 23 (23 ½, 24, 24 ½, 25)" from beg, ending after WS row.

### Shape Shoulders

BO 5 (5, 5, 6, 6) at beg of next four rows, then BO 4 (5, 6, 5, 6) sts at beg of next two rows.

## Front

Work same as back until piece measures approx 19 ½ (20, 20 ½, 21, 21 ½)" from beg, ending after WS row.

### Shape Neck

Next Row (RS): Work across first 24 (25, 26, 27, 28) sts; join second ball of yarn and BO middle 15 sts, work to end row.

Work both sides at once with separate balls of yarn, and BO 4 sts each neck edge once, BO 2 sts each neck edge once, then dec 1 st each neck edge every row twice, then every other row twice—14 (15, 16, 17, 18) sts rem each side.

Cont even, if necessary, until piece measures same as back to shoulders.

### Shape Shoulders

Work same as for back.

## Sleeves

With larger needles, CO 48 (48, 48, 52, 52) sts.

Work four rows of Garter St.

Beg Stockinette St Patt, and inc 1 st each side every sixth row 0 (1, 4, 0, 6) times, every eighth row 7 (9, 7, 9, 6) times, then every tenth row 2 (0, 0, 1, 0) times—66 (68, 70, 72, 76) sts.

Cont even until sleeve measures approx 12 (12 ¼, 12 ½, 13, 13 ¼)" from beg, ending after WS row.

### Shape Cap

BO 5 (6, 7, 8, 9) sts at beg of next two rows, then work fully-fashioned decreases (see Note) each side every fourth row 0 (1, 3, 5, 5) times, every other row 13 (14, 11, 9, 11) times, then every row 2 (0, 1, 1, 0) times—26 sts rem.

BO 3 sts at beg of next four rows—14 sts rem.

BO.

## Finishing

Block pieces to measurements.

### Lower Back Edging

With larger needles and RS facing, pick up and knit 94 (108, 122, 136, 150) sts along lower back edging.

Row 1 (WS): Knit across.

Row 2: \*K1, K into front and back of next st. Repeat from \* across.

Row 3: \*P1, P into front and back of next st. Repeat from \* across.

Row 4: Knit across.

Row 5: As Row 3.

**Row 6:** K as you BO.

**Lower Front Edging**

Same as lower back edging.

**Lower Sleeve Edging**

With larger needles and RS facing, pick up and knit 48 (48, 48, 52, 52) sts along lower edge of sleeve.

Complete same as lower back edging.

Sew shoulder seams.

**Neckband**

With RS facing and circular needle, pick up and knit 125 sts around neckline. Join, placing marker for beg of rnd.

Work Garter St in the round (knit one rnd, purl one rnd) until neckband measures approx ½" from beg.

**Next Rnd:** Knit, dec 18 sts as follows: K 2, (K2tog, K5) 17 times, K2tog, K2—107 sts rem.

Cont even in Garter St in the round (K one rnd, P one rnd) until neckband measures approx ¾" from beg.

BO.

Set in sleeves.

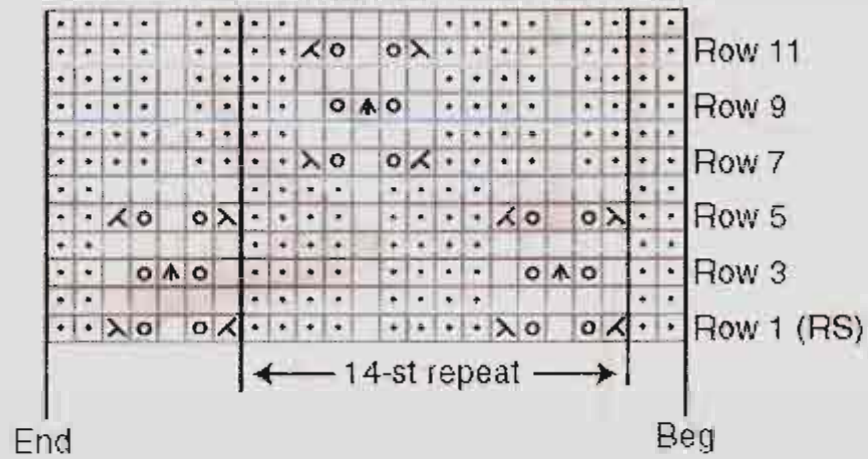
Sew sleeve and side seams.


**Knitted I-cord Tie**

CO 3 sts onto dpn. Knit I-cord until tie measures approx 59" from beg. BO.

Beg and end at center front, thread tie through last row of Lace Patt at empire waistband.

## Lace Pattern



KEY  = K on RS: P on WS

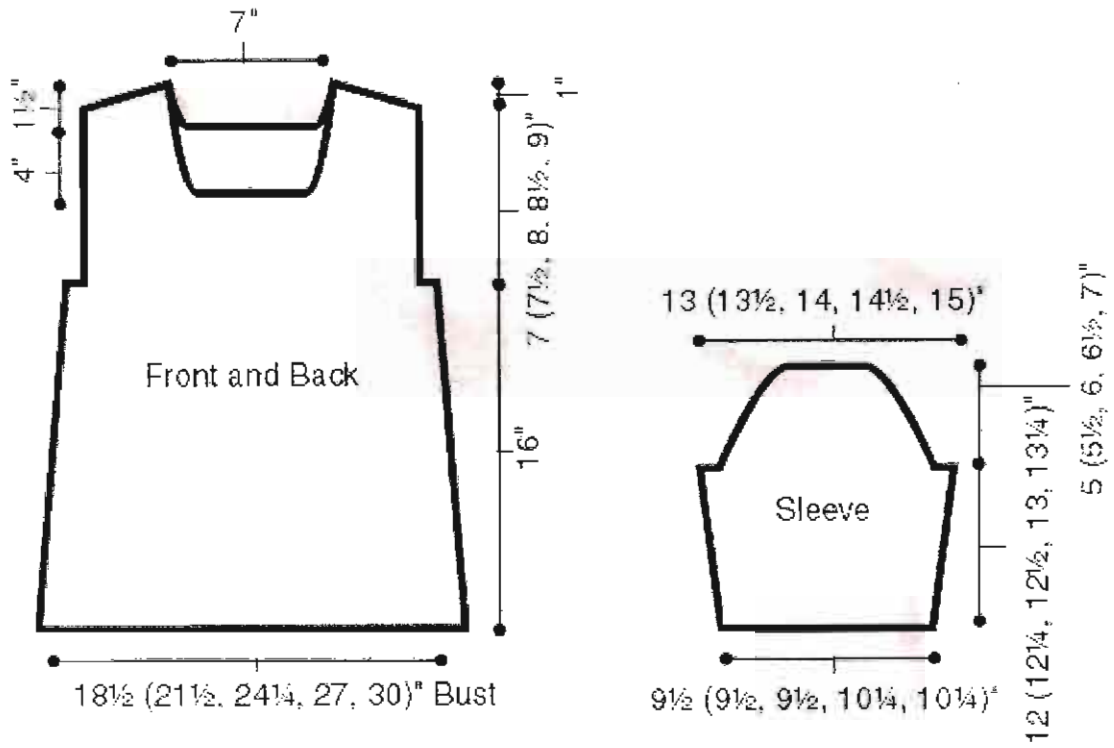
· = P on RS: K on WS

○ = Yarn over

▲ = Slip 2 sts at once knitwise: K1: p2sso

◁ = K2tog

× = SSK



Note: Measurements on schematic illustration do not include lower edgings.