



W422

Cascade Cash Vero  
Ariana Sweater



Designed by Melissa Leapman

**Cash Vero Ariana**  
**Designed by Melissa Leapman**

**Sizes**

Small (Medium, Large, 1X). Instructions are for smallest size, with changes for other sizes noted in parentheses as necessary.

**Finished Measurements**

Bust: 34 (40, 46, 52)"

Total length: 24 (24 ½, 24 ½, 25)"

**Materials**

Cascade Yarn's *Cash Vero*, 15 (17, 19, 21) balls of #040

One pair of sizes 6 and 8 knitting needles or size needed to obtain gauge

One cable needle

**Gauge**

In Cable Patt with larger needles, 32 sts and 24 rows = 4";

In Garter Rib Patt with larger needles, 20 sts and 28 rows = 4". **To save time, take time to check gauge.**

**Cable Patt** (*mult 24 + 16 sts*)

See chart.

**Garter Rib Patt** (*over mult. 4 + 2 sts*)

**Row 1 (RS):** K1, \*K1, P2, K1. Repeat from \* across, ending row with K1.

**Row 2:** Purl across.

Repeat Rows 1 and 2 for patt.

**Note**

**For fully-fashioned increases:** K2, M1, work across in patt as established until 2 sts rem, ending row with M1, K2; on subsequent rows, work these new sts into patt.

**Back**

With larger needles, CO 136 (160, 184, 208) sts.

Beg Cable Patt, and work even until piece measures approx 14 ½" from beg, ending after WS row.

**Shape Armholes**

BO 12 (24, 36, 36) sts at beg of next two rows—112 (112, 112, 136) sts rem.

Cont even in patt as established until piece measures approx 23 (23 ½, 23 ½, 24)" from beg, ending after WS row.

### **Shape Shoulders**

BO 13 (13, 13, 17) sts at beg of next four rows, then BO 14 (14, 14, 18) sts at beg of next two rows—32 sts rem.

BO.

### **Front**

Same as back until piece measures approx 21 (21 ½, 21 ½, 22)" from beg, ending after WS row.

### **Shape Neck**

Work across first 50 (50, 50, 62) sts; join second ball of yarn and BO middle 12 sts, work to end row.

Work both sides at once with separate balls of yarn and BO 6 sts each neck edge once, BO 2 sts each neck edge once, then dec 1 st each neck edge once—40 (40, 40, 52) sts rem each side.

Cont even, if necessary, until piece measures same as back to shoulders.

### **Shape Shoulders**

Same as for back.

### **Sleeves**

With larger needles, CO 50 (54, 54, 58) sts.

Beg Garter Rib Patt, and work even until piece measures approx ½" from beg, ending after WS row.

Cont patt, and work fully-fashioned increases (see Notes) each side every other row 0 (5, 11, 16) times, then every fourth row 18 (13, 7, 3) times, working new sts into patt as they accumulate—86 (90, 90, 96) sts.

Cont even until sleeve measures approx 12 ½ (12 ½, 12 ½, 11 ½)" from beg, ending after WS row.

BO.

### **Finishing**

Sew right shoulder seam.

## Neckband

With RS facing and smaller needles, pick up and knit 98 sts evenly along neckline.

**Next Row:** \*P2, K2; repeat from \* across, ending row with P2.

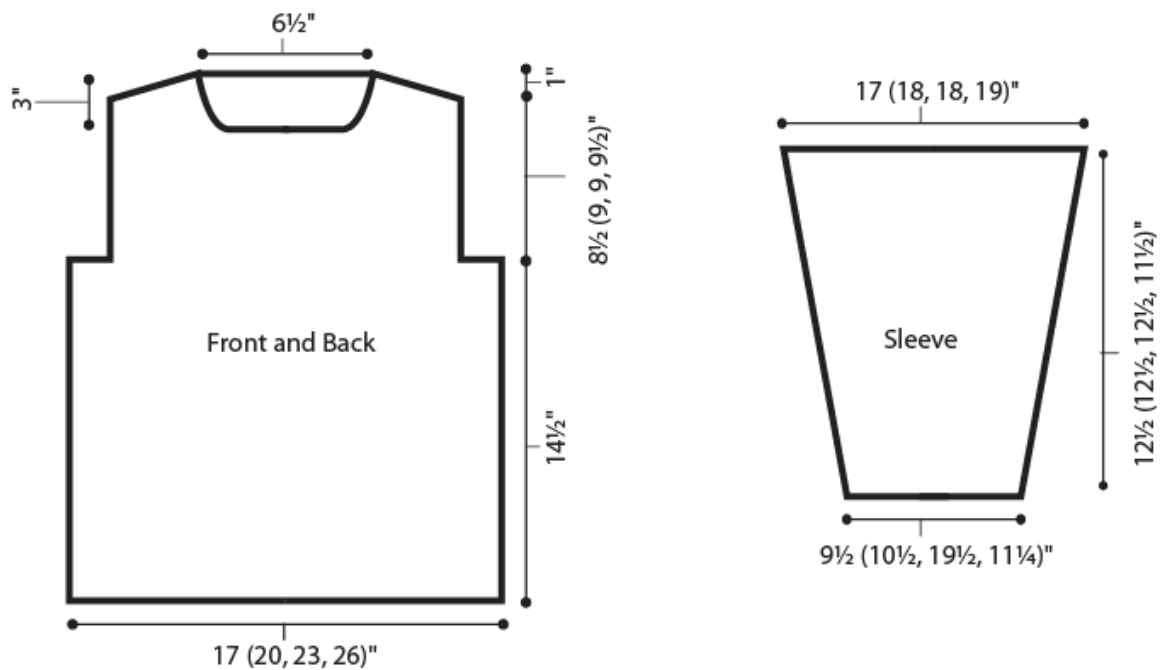
**Next Row:** \*K2, P2; repeat from \* across, ending row with K2.

Repeat last two rows until neckband measures approx 3 ½".

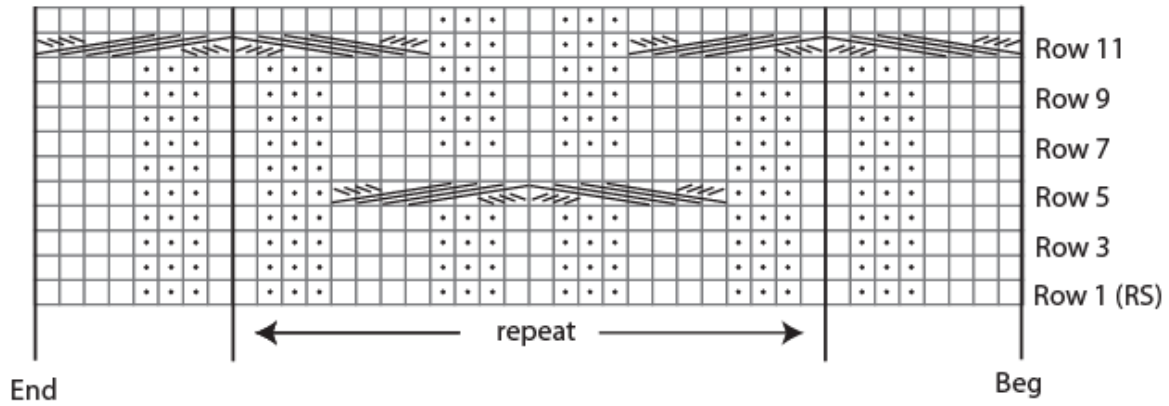
BO *loosely* in patt.

Sew left shoulder seam, including side of neckband.

Set in sleeves. Sew sleeve and side seams.



### Cable Pattern



KEY      □ = K on RS; P on WS

          • = P on RS; K on WS

 = Slip 4 sts onto cn and hold in front; K4; K4 from cn

 = Slip 4 sts onto cn and hold in back; K4; K4 from cn